

Product datasheet for **TA503326AM**

NEK9 Mouse Monoclonal Antibody (Biotin conjugated) [Clone ID: OTI1H1]

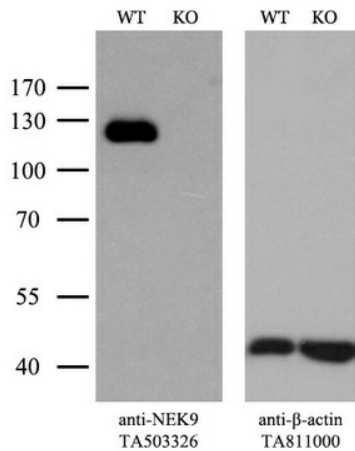
Product data:

Product Type:	Primary Antibodies
Clone Name:	OTI1H1
Applications:	FC, IF, WB
Recommended Dilution:	WB 1:2000, IF 1:100, FLOW 1:100
Reactivity:	Human, Mouse, Rat
Host:	Mouse
Isotype:	IgG1
Clonality:	Monoclonal
Immunogen:	Full length human recombinant protein of human NEK9(NP_149107) produced in HEK293 cell.
Formulation:	PBS (pH 7.3) containing 1% BSA, 50% glycerol and 0.02% sodium azide.
Concentration:	0.5 mg/ml
Purification:	Purified from mouse ascites fluids or tissue culture supernatant by affinity chromatography (protein A/G)
Conjugation:	Biotin
Storage:	Store at -20°C as received.
Stability:	Stable for 12 months from date of receipt.
Predicted Protein Size:	107 kDa
Gene Name:	NIMA related kinase 9
Database Link:	NP_149107 Entrez Gene 217718 MouseEntrez Gene 299204 RatEntrez Gene 91754 Human Q8TD19
Synonyms:	APUG; LCCS10; NC; NERCC; NERCC1
Protein Families:	Druggable Genome, Protein Kinase

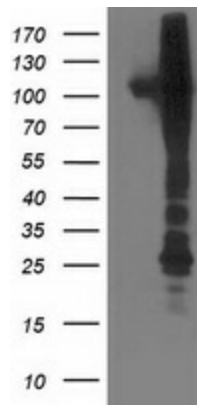


[View online »](#)

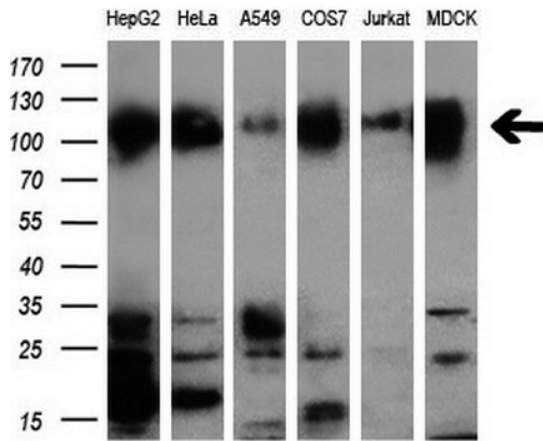
Product images:



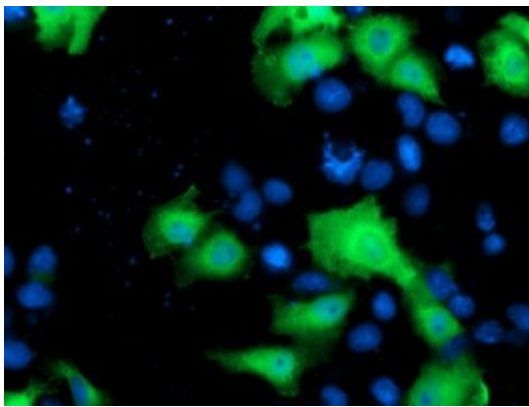
Equivalent amounts of cell lysates (10 ug per lane) of wild-type HeLa cells (WT, Cat# LC810HELA) and NEK9-Knockout hela cells (KO, Cat# [LC810398]) were separated by SDS-PAGE and immunoblotted with anti-NEK9 monoclonal antibody [TA503326]. Then the blotted membrane was stripped and reprobed with anti- β -actin ([TA811000]) as a loading control (1:500).



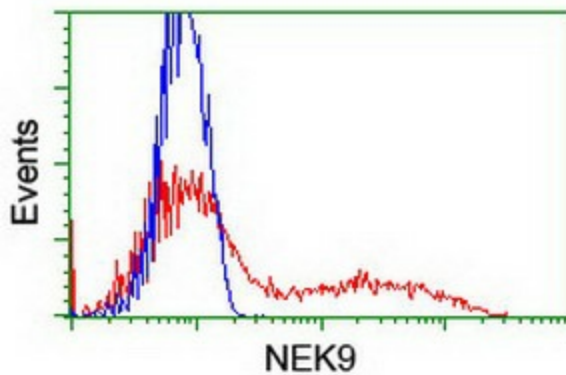
HEK293T cells were transfected with the pCMV6-ENTRY control (Cat# [PS100001], Left lane) or pCMV6-ENTRY NEK9 (Cat# [RC211326], Right lane) cDNA for 48 hrs and lysed. Equivalent amounts of cell lysates (5 ug per lane) were separated by SDS-PAGE and immunoblotted with anti-NEK9(Cat# [TA503326]). Positive lysates [LY409721] (100ug) and [LC409721] (20ug) can be purchased separately from OriGene.



Western blot analysis of extracts (10ug) from 6 different cell lines by using anti-NEK9 monoclonal antibody (1:200).



Anti-NEK9 mouse monoclonal antibody ([TA503326]) immunofluorescent staining of COS7 cells transiently transfected by pCMV6-ENTRY NEK9 ([RC211326]).



HEK293T cells transfected with either [RC211326] overexpress plasmid (Red) or empty vector control plasmid (Blue) were immunostained by anti-NEK9 antibody ([TA503326]), and then analyzed by flow cytometry.