

## Product datasheet for **TA503320S**

### **MCAK (KIF2C) Mouse Monoclonal Antibody [Clone ID: OTI1C5]**

#### **Product data:**

<b>Product Type:</b>	Primary Antibodies
<b>Clone Name:</b>	OTI1C5
<b>Applications:</b>	FC, IF, WB
<b>Recommended Dilution:</b>	WB 1:500~2000, IHC 1:150, IF 1:100, FLOW 1:100
<b>Reactivity:</b>	Human, Rat, Monkey, Mouse
<b>Host:</b>	Mouse
<b>Isotype:</b>	IgG1
<b>Clonality:</b>	Monoclonal
<b>Immunogen:</b>	Full length human recombinant protein of human KIF2C(NP_006836) produced in HEK293T cell.
<b>Formulation:</b>	PBS (pH 7.3) containing 1% BSA, 50% glycerol and 0.02% sodium azide.
<b>Concentration:</b>	0.65 mg/ml
<b>Purification:</b>	Purified from mouse ascites fluids or tissue culture supernatant by affinity chromatography (protein A/G)
<b>Conjugation:</b>	Unconjugated
<b>Storage:</b>	Store at -20°C as received.
<b>Stability:</b>	Stable for 12 months from date of receipt.
<b>Predicted Protein Size:</b>	81.1 kDa
<b>Gene Name:</b>	kinesin family member 2C
<b>Database Link:</b>	<a href="#">NP_006836</a> <a href="#">Entrez Gene 73804 Mouse</a> <a href="#">Entrez Gene 171529 Rat</a> <a href="#">Entrez Gene 705381 Monkey</a> <a href="#">Entrez Gene 11004 Human</a> <a href="#">Q99661</a>
<b>Background:</b>	The protein encoded by this gene is a member of kinesin-like protein family. Proteins of this family are microtubule-dependent molecular motors that transport organelles within cells and move chromosomes during cell division. This protein is important for anaphase chromosome segregation and may be required to coordinate the onset of sister centromere separation. [provided by RefSeq]

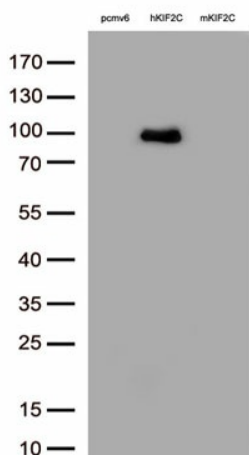


[View online »](#)

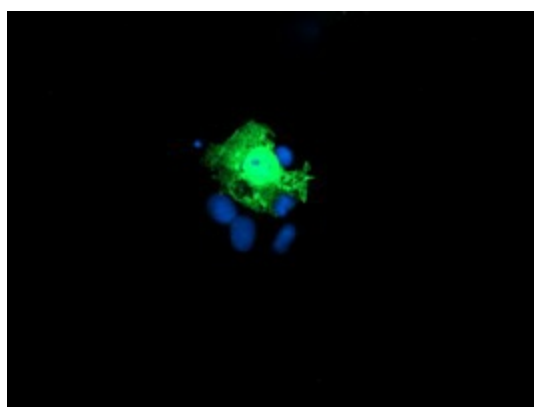
Synonyms: CT139; KNSL6; MCAK

Protein Families: Druggable Genome

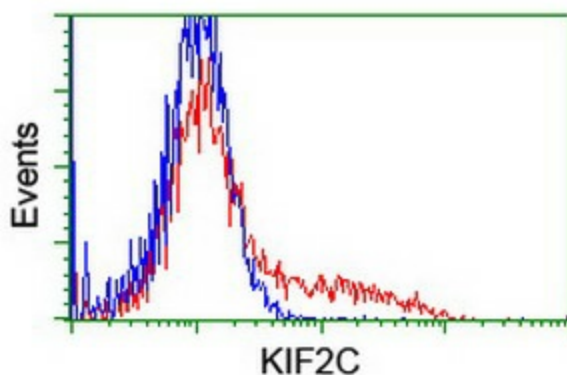
### Product images:



HEK293T cells were transfected with the pCMV6-ENTRY control (Left lane) or pCMV6-ENTRY human KIF2C ([RC200254], Middle lane) cDNA or pCMV6-ENTRY mouse KIF2C ([MR210280], Right lane) cDNA for 48 hrs and lysed. Equivalent amounts of cell lysates (5 ug per lane) were separated by SDS-PAGE and immunoblotted with anti-KIF2C. ([TA503320], 1:500)



Anti-KIF2C mouse monoclonal antibody ([TA503320]) immunofluorescent staining of COS7 cells transiently transfected by pCMV6-ENTRY KIF2C ([RC200254]).



HEK293T cells transfected with either [RC200254] overexpress plasmid (Red) or empty vector control plasmid (Blue) were immunostained by anti-KIF2C antibody ([TA503320]), and then analyzed by flow cytometry.