

## Product datasheet for TA503319M

### PDE1B Mouse Monoclonal Antibody [Clone ID: OTI6E4]

#### Product data:

Product Type:	Primary Antibodies
Clone Name:	OTI6E4
Applications:	FC, IF, IHC, WB
Recommended Dilution:	WB 1:2000, IHC 1:150, IF 1:100, FLOW 1:100
Reactivity:	Human, Mouse, Rat
Host:	Mouse
Isotype:	IgG2b
Clonality:	Monoclonal
Immunogen:	Full length human recombinant protein of human PDE1B(NP_000915) produced in HEK293T cell.
Formulation:	PBS (pH 7.3) containing 1% BSA, 50% glycerol and 0.02% sodium azide.
Concentration:	1 mg/ml
Purification:	Purified from mouse ascites fluids or tissue culture supernatant by affinity chromatography (protein A/G)
Conjugation:	Unconjugated
Storage:	Store at -20°C as received.
Stability:	Stable for 12 months from date of receipt.
Predicted Protein Size:	61.2 kDa
Gene Name:	phosphodiesterase 1B
Database Link:	<a href="#">NP_000915</a> <a href="#">Entrez Gene 18574 Mouse</a> <a href="#">Entrez Gene 29691 Rat</a> <a href="#">Entrez Gene 5153 Human</a> <a href="#">Q01064</a>
Background:	Cyclic nucleotide phosphodiesterases (PDEs) catalyze hydrolysis of the cyclic nucleotides cAMP and cGMP to the corresponding nucleoside 5-prime-monophosphates. Mammalian PDEs have been classified into several families based on their biochemical properties. Members of the PDE1 family, such as PDE1B, are calmodulin (see MIM 114180)-dependent PDEs (CaM-PDEs) that are stimulated by a calcium-calmodulin complex (Repaske et al., 1992 [PubMed 1326532]). [supplied by OMIM]

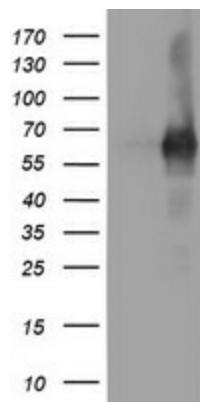

[View online »](#)

**Synonyms:** PDE1B1; PDES1B

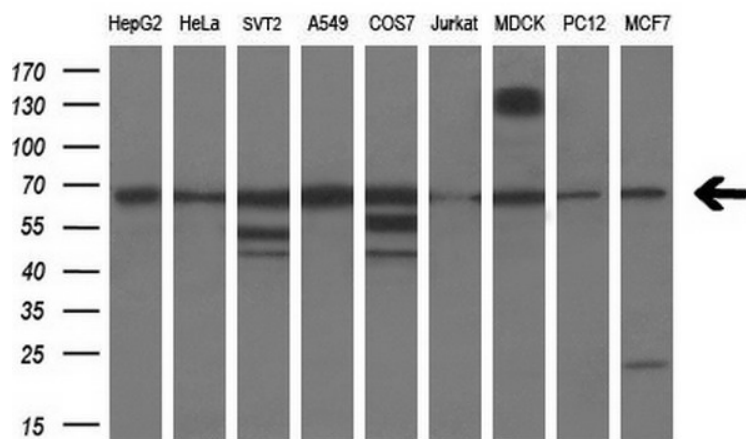
**Protein Families:** Druggable Genome

**Protein Pathways:** Calcium signaling pathway, Progesterone-mediated oocyte maturation, Purine metabolism

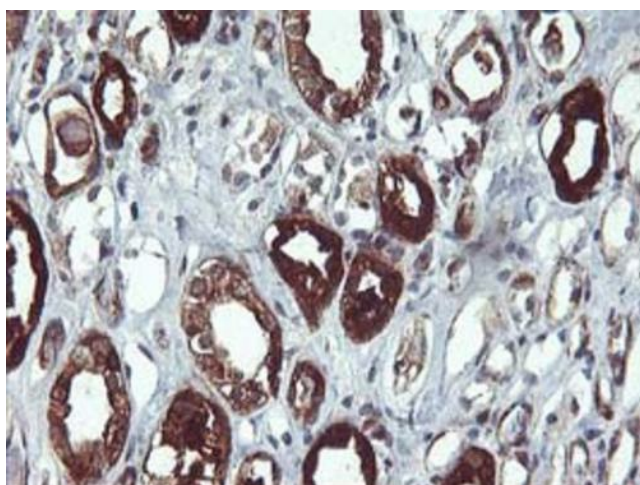
### Product images:



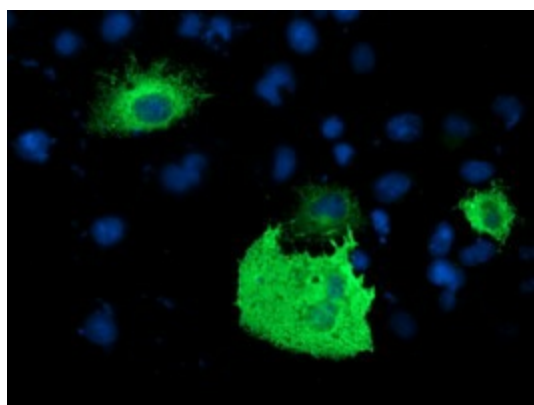
HEK293T cells were transfected with the pCMV6-ENTRY control (Cat# [PS100001], Left lane) or pCMV6-ENTRY PDE1B (Cat# [RC206588], Right lane) cDNA for 48 hrs and lysed. Equivalent amounts of cell lysates (5 ug per lane) were separated by SDS-PAGE and immunoblotted with anti-PDE1B (Cat# [TA503319]). Positive lysates [LY400337] (100ug) and [LC400337] (20ug) can be purchased separately from OriGene.



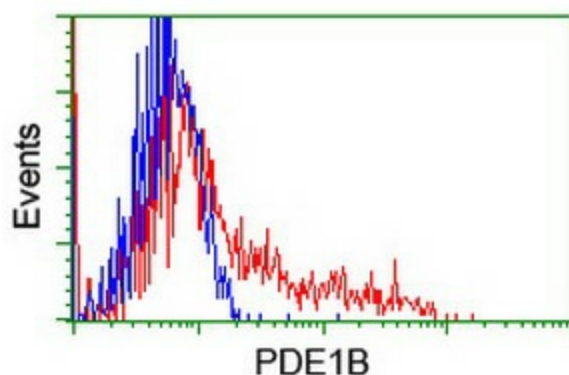
Western blot analysis of extracts (35ug) from 9 different cell lines by using anti-PDE1B monoclonal antibody (HepG2: human; HeLa: human; SVT2: mouse; A549: human; COS7: monkey; Jurkat: human; MDCK: canine; PC12: rat; MCF7: human) (1:200).



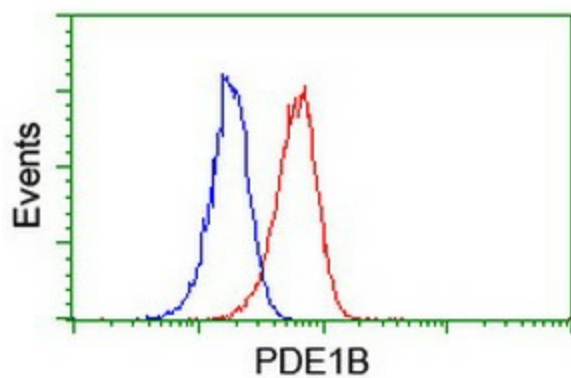
Immunohistochemical staining of paraffin-embedded Human Kidney tissue within the normal limits using anti-PDE1B mouse monoclonal antibody. Heat-induced epitope retrieval by EDTA solution buffer pH 8.0 at 120°C for 3 min.



Anti-PDE1B mouse monoclonal antibody ([TA503319]) immunofluorescent staining of COS7 cells transiently transfected by pCMV6-ENTRY PDE1B ([RC206588]).



HEK293T cells transfected with either [RC206588] overexpress plasmid (Red) or empty vector control plasmid (Blue) were immunostained by anti-PDE1B antibody ([TA503319]), and then analyzed by flow cytometry.



Flow cytometric Analysis of Jurkat cells, using anti-PDE1B antibody ([TA503319]), (Red), compared to a nonspecific negative control antibody, (Blue).