

## Product datasheet for **TA503296S**

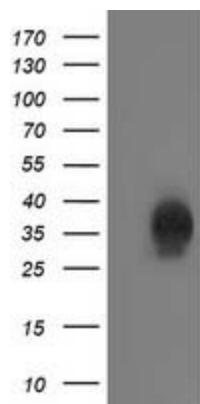
### **CXorf26 (PBDC1) Mouse Monoclonal Antibody [Clone ID: OTI4F11]**

#### **Product data:**

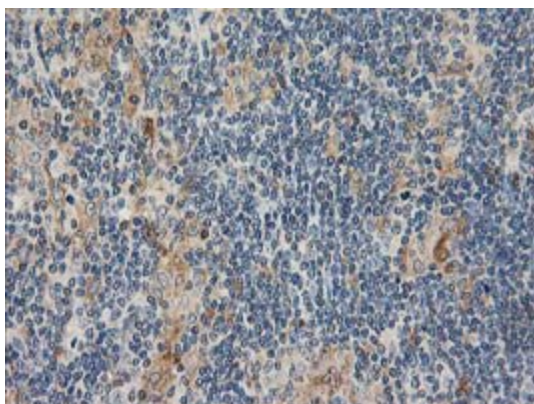
Product Type:	Primary Antibodies
Clone Name:	OTI4F11
Applications:	FC, IF, IHC, WB
Recommended Dilution:	WB 1:2000, IHC 1:150, IF 1:100, FLOW 1:100
Reactivity:	Human, Mouse, Rat
Host:	Mouse
Isotype:	IgG1
Clonality:	Monoclonal
Immunogen:	Full length human recombinant protein of human CXorf26(NP_057584) produced in HEK293 cell.
Formulation:	PBS (pH 7.3) containing 1% BSA, 50% glycerol and 0.02% sodium azide.
Concentration:	0.26 mg/ml
Purification:	Purified from mouse ascites fluids or tissue culture supernatant by affinity chromatography (protein A/G)
Conjugation:	Unconjugated
Storage:	Store at -20°C as received.
Stability:	Stable for 12 months from date of receipt.
Predicted Protein Size:	25.9 kDa
Gene Name:	polysaccharide biosynthesis domain containing 1
Database Link:	<a href="#">NP_057584</a> <a href="#">Entrez Gene 51260 Human</a> <a href="#">Q9BVG4</a>
Synonyms:	CXorf26



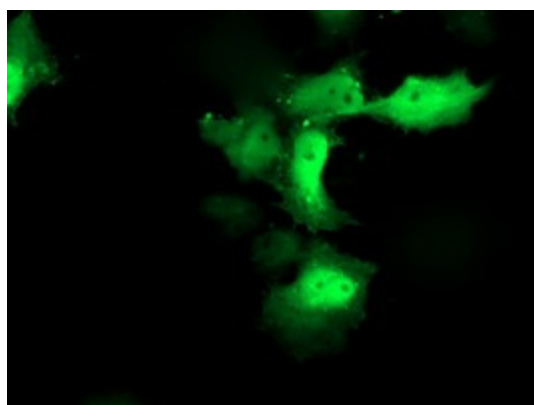
[View online »](#)

**Product images:**

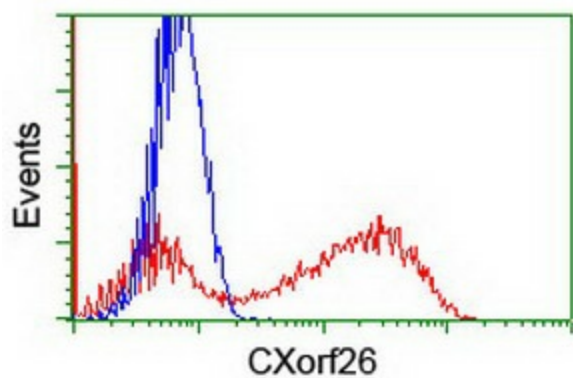
HEK293T cells were transfected with the pCMV6-ENTRY control (Left lane) or pCMV6-ENTRY CXorf26 ([RC200095], Right lane) cDNA for 48 hrs and lysed. Equivalent amounts of cell lysates (5 ug per lane) were separated by SDS-PAGE and immunoblotted with anti-CXorf26. Positive lysates [LY413940] (100ug) and [LC413940] (20ug) can be purchased separately from OriGene.



Immunohistochemical staining of paraffin-embedded Human lymphoma tissue using anti-CXorf26 mouse monoclonal antibody. (Heat-induced epitope retrieval by 10mM citric buffer, pH6.0, 100°C for 10min, [TA503296])



Anti-CXorf26 mouse monoclonal antibody ([TA503296]) immunofluorescent staining of COS7 cells transiently transfected by pCMV6-ENTRY CXorf26 ([RC200095]).



HEK293T cells transfected with either [RC200095] overexpress plasmid (Red) or empty vector control plasmid (Blue) were immunostained by anti-CXorf26 antibody ([TA503296]), and then analyzed by flow cytometry.