

## Product datasheet for **TA503274AM**

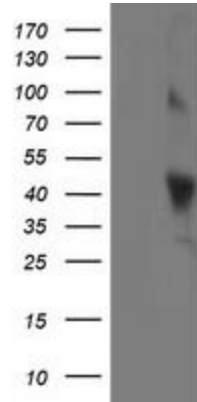
### **OBFC1 (STN1) Mouse Monoclonal Antibody (Biotin conjugated) [Clone ID: OTI1C5]**

#### **Product data:**

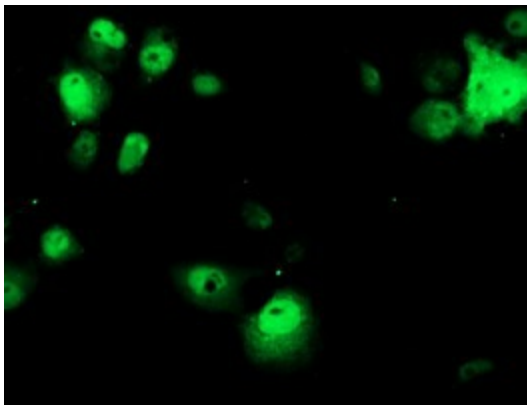
<b>Product Type:</b>	Primary Antibodies
<b>Clone Name:</b>	OTI1C5
<b>Applications:</b>	FC, IF, WB
<b>Recommended Dilution:</b>	WB 1:2000, IF 1:100, FLOW 1:100
<b>Reactivity:</b>	Human
<b>Host:</b>	Mouse
<b>Isotype:</b>	IgG1
<b>Clonality:</b>	Monoclonal
<b>Immunogen:</b>	Full length human recombinant protein of human OBFC1 (NP_079204) produced in HEK293T cell.
<b>Formulation:</b>	PBS (pH 7.3) containing 1% BSA, 50% glycerol and 0.02% sodium azide.
<b>Concentration:</b>	0.5 mg/ml
<b>Purification:</b>	Purified from mouse ascites fluids or tissue culture supernatant by affinity chromatography (protein A/G)
<b>Conjugation:</b>	Biotin
<b>Storage:</b>	Store at -20°C as received.
<b>Stability:</b>	Stable for 12 months from date of receipt.
<b>Predicted Protein Size:</b>	41.9 kDa
<b>Gene Name:</b>	STN1 subunit of CST complex
<b>Database Link:</b>	<a href="#">NP_079204</a> <a href="#">Entrez Gene 79991 Human</a> <a href="#">Q9H668</a>
<b>Background:</b>	OBFC1 and C17ORF68 (MIM 613129) are subunits of an alpha accessory factor (AAF) that stimulates the activity of DNA polymerase-alpha-primase (see MIM 176636), the enzyme that initiates DNA replication (Casteel et al., 2009 [PubMed 19119139]). OBFC1 also appears to function in a telomere-associated complex with C17ORF68 and TEN1
<b>Synonyms:</b>	AAF-44; AAF44; bA541N10.2; RPA-32; STN1



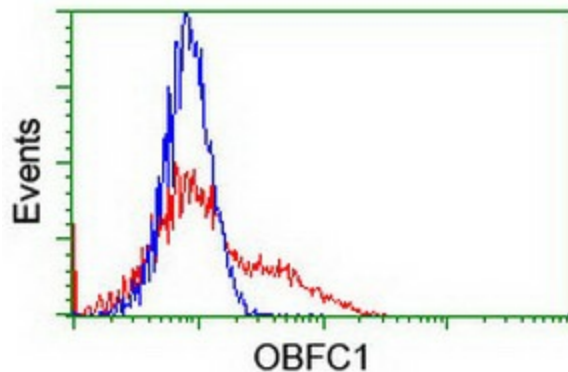
[View online »](#)

**Product images:**

HEK293T cells were transfected with the pCMV6-ENTRY control (Left lane) or pCMV6-ENTRY OBFC1 ([RC200778], Right lane) cDNA for 48 hrs and lysed. Equivalent amounts of cell lysates (5 ug per lane) were separated by SDS-PAGE and immunoblotted with anti-OBFC1. Positive lysates [LY410967] (100ug) and [LC410967] (20ug) can be purchased separately from OriGene.



Anti-OBFC1 mouse monoclonal antibody ([TA503274]) immunofluorescent staining of COS7 cells transiently transfected by pCMV6-ENTRY OBFC1 ([RC200778]).



HEK293T cells transfected with either [RC200778] overexpress plasmid (Red) or empty vector control plasmid (Blue) were immunostained by anti-OBFC1 antibody ([TA503274]), and then analyzed by flow cytometry.