

## Product datasheet for **TA503269M**

### Aldehyde dehydrogenase 10 (ALDH3A2) Mouse Monoclonal Antibody [Clone ID: OTI2D3]

#### Product data:

|                         |  |
|-------------------------|--|
| Product Type:           | Primary Antibodies   |
| Clone Name:             | OTI2D3   |
| Applications:           | WB   |
| Recommended Dilution:   | WB 1:500~2000  |
| Reactivity:             | Human, Dog, Rat, Monkey  |
| Host:                   | Mouse  |
| Isotype:                | IgG2b  |
| Clonality:              | Monoclonal   |
| Immunogen:              | Full length human recombinant protein of human ALDH3A2(NP_001026976) produced in HEK293T cell.   |
| Formulation:            | PBS (pH 7.3) containing 1% BSA, 50% glycerol and 0.02% sodium azide.   |
| Concentration:          | 1 mg/ml  |
| Purification:           | Purified from mouse ascites fluids or tissue culture supernatant by affinity chromatography (protein A/G)  |
| Conjugation:            | Unconjugated   |
| Storage:                | Store at -20°C as received.  |
| Stability:              | Stable for 12 months from date of receipt.   |
| Predicted Protein Size: | 57.5 kDa   |
| Gene Name:              | aldehyde dehydrogenase 3 family member A2  |
| Database Link:          | <a href="#">NP_001026976</a><br><a href="#">Entrez Gene 65183 Rat</a> <a href="#">Entrez Gene 479518 Dog</a> <a href="#">Entrez Gene 703661 Monkey</a> <a href="#">Entrez Gene 100688308 Dog</a> <a href="#">Entrez Gene 224 Human</a><br><a href="#">P51648</a>   |
| Background:             | Aldehyde dehydrogenase isozymes are thought to play a major role in the detoxification of aldehydes generated by alcohol metabolism and lipid peroxidation. This gene product catalyzes the oxidation of long-chain aliphatic aldehydes to fatty acid. Mutations in the gene cause Sjogren-Larsson syndrome. Alternatively spliced transcript variants encoding different isoforms have been found for this gene. [provided by RefSeq, Jul 2008] |

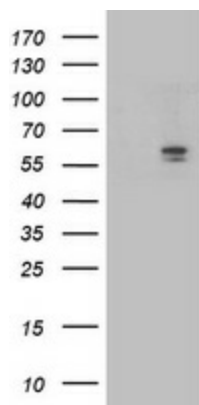

[View online »](#)

**Synonyms:** ALDH10; FALDH; SLS

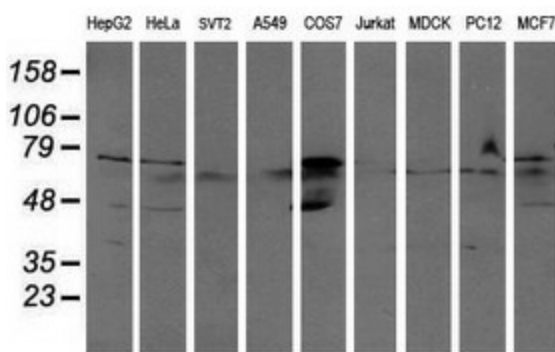
**Protein Families:** Druggable Genome, Transmembrane

**Protein Pathways:** Arginine and proline metabolism, Ascorbate and aldarate metabolism, beta-Alanine metabolism, Butanoate metabolism, Fatty acid metabolism, Glycerolipid metabolism, Glycolysis / Gluconeogenesis, Histidine metabolism, Limonene and pinene degradation, Lysine degradation, Metabolic pathways, Propanoate metabolism, Pyruvate metabolism, Tryptophan metabolism, Valine, leucine and isoleucine degradation

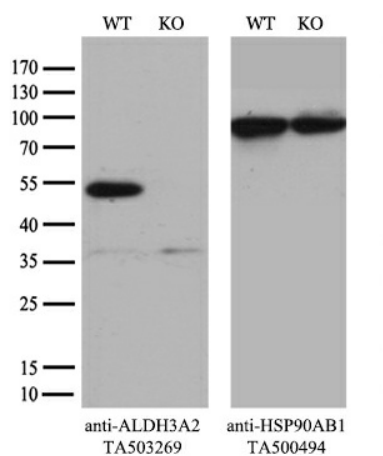
## Product images:



HEK293T cells were transfected with the pCMV6-ENTRY control (Left lane) or pCMV6-ENTRY ALDH3A2 ([RC200648], Right lane) cDNA for 48 hrs and lysed. Equivalent amounts of cell lysates (5 ug per lane) were separated by SDS-PAGE and immunoblotted with anti-ALDH3A2. Positive lysates [LY422196] (100ug) and [LC422196] (20ug) can be purchased separately from OriGene.



Western blot analysis of extracts (35ug) from 9 different cell lines by using anti-ALDH3A2 monoclonal antibody (HepG2: human; HeLa: human; SVT2: mouse; A549: human; COS7: monkey; Jurkat: human; MDCK: canine; PC12: rat; MCF7: human).



Equivalent amounts of cell lysates (10 ug per lane) of wild-type HeLa cells (WT, Cat# LC810HELA) and ALDH3A2-Knockout HeLa cells (KO, Cat# [LC832790]) were separated by SDS-PAGE and immunoblotted with anti-ALDH3A2 monoclonal antibody [TA503269] (1:500). Then the blotted membrane was stripped and reprobed with anti-HSP90 antibody as a loading control.