

Product datasheet for **TA503266BM**

TRAP alpha (SSR1) Mouse Monoclonal Antibody (HRP conjugated) [Clone ID: OTI 1B10]

Product data:

Product Type:	Primary Antibodies
Clone Name:	OTI 1B10
Applications:	FC, IF, WB
Recommended Dilution:	WB 1:2000, FLOW 1:100, IF: 1:100
Reactivity:	Human, Mouse, Rat
Host:	Mouse
Isotype:	IgG1
Clonality:	Monoclonal
Immunogen:	Full length human recombinant protein of human SSR1 (NP_003135) produced in HEK293T cell.
Formulation:	PBS (pH 7.3) containing 1% BSA, 50% glycerol.
Concentration:	0.5 mg/ml
Purification:	Purified from mouse ascites fluids or tissue culture supernatant by affinity chromatography (protein A/G)
Conjugation:	HRP
Storage:	Store at -20°C as received.
Stability:	Stable for 12 months from date of receipt.
Predicted Protein Size:	32.1 kDa
Gene Name:	signal sequence receptor subunit 1
Database Link:	NP_003135 Entrez Gene 107513 Mouse Entrez Gene 6745 Human P43307
Background:	The signal sequence receptor (SSR) is a glycosylated endoplasmic reticulum (ER) membrane receptor associated with protein translocation across the ER membrane. The SSR consists of 2 subunits, a 34-kD glycoprotein encoded by this gene and a 22-kD glycoprotein. This gene generates several mRNA species as a result of complex alternative polyadenylation. This gene is unusual in that it utilizes arrays of polyA signal sequences that are mostly non-canonical. [provided by RefSeq, Jul 2008]

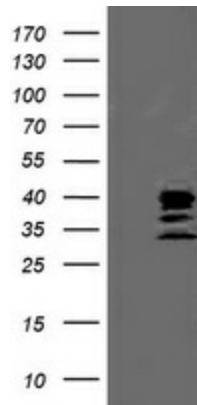


[View online »](#)

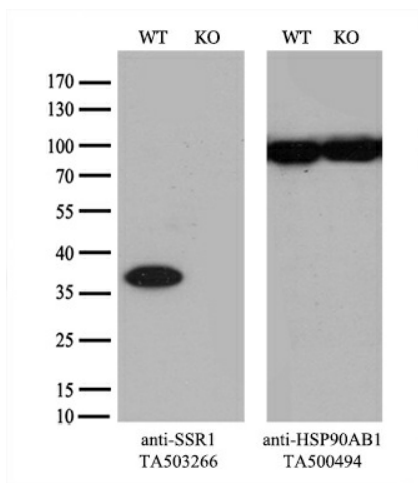
Synonyms: TRAPA

Protein Families: Druggable Genome, Transmembrane

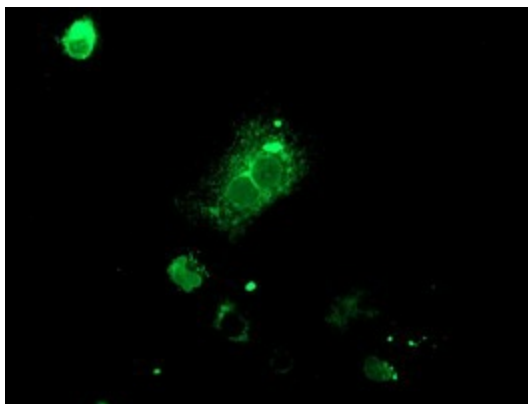
Product images:



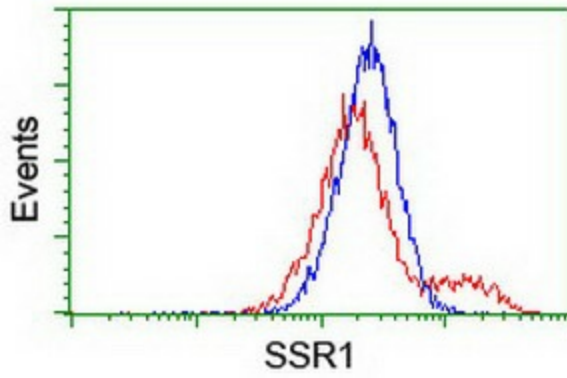
HEK293T cells were transfected with the pCMV6-ENTRY control (Left lane) or pCMV6-ENTRY SSR1 ([RC202408], Right lane) cDNA for 48 hrs and lysed. Equivalent amounts of cell lysates (5 ug per lane) were separated by SDS-PAGE and immunoblotted with anti-SSR1. Positive lysates [LY401093] (100ug) and [LC401093] (20ug) can be purchased separately from OriGene.



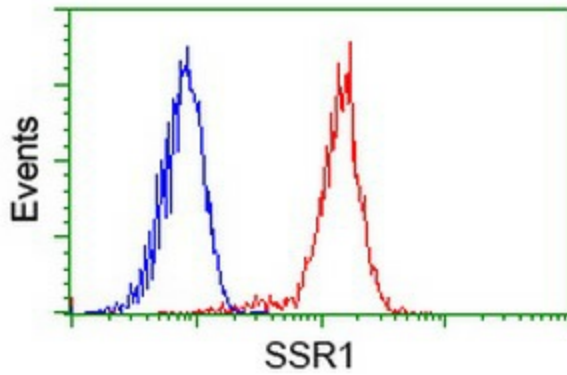
Equivalent amounts of cell lysates (10 ug per lane) of wild-type HeLa cells (WT, Cat# LC810HELA) and SSR1-Knockout HeLa cells (KO, Cat# [LC812609]) were separated by SDS-PAGE and immunoblotted with anti-SSR1 monoclonal antibody [TA503266] (1:2000). Then the blotted membrane was stripped and reprobed with anti-HSP90 antibody as a loading control.



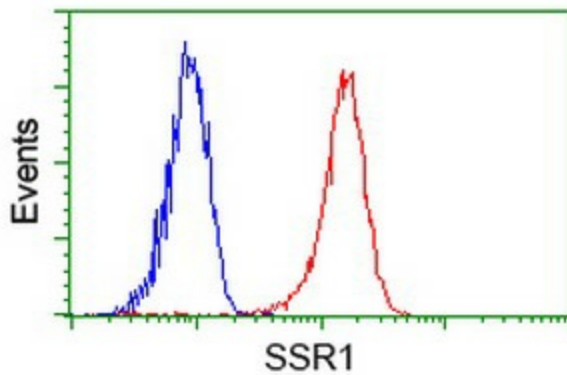
Anti-SSR1 mouse monoclonal antibody ([TA503266]) immunofluorescent staining of COS7 cells transiently transfected by pCMV6-ENTRY SSR1 ([RC202408]).



HEK293T cells transfected with either [RC202408] overexpress plasmid (Red) or empty vector control plasmid (Blue) were immunostained by anti-SSR1 antibody ([TA503266]), and then analyzed by flow cytometry.



Flow cytometric Analysis of HeLa cells, using anti-SSR1 antibody ([TA503266]), (Red), compared to a nonspecific negative control antibody, (Blue).



Flow cytometric Analysis of Jurkat cells, using anti-SSR1 antibody ([TA503266]), (Red), compared to a nonspecific negative control antibody, (Blue).