

## Product datasheet for **TA503265AM**

### TRAP alpha (SSR1) Mouse Monoclonal Antibody (Biotin conjugated) [Clone ID: OTI 5D5]

#### Product data:

Product Type:	Primary Antibodies
Clone Name:	OTI 5D5
Applications:	FC, WB
Recommended Dilution:	WB 1:500, FLOW 1:100
Reactivity:	Human, Mouse, Rat
Host:	Mouse
Isotype:	IgG1
Clonality:	Monoclonal
Immunogen:	Full length human recombinant protein of human SSR1 (NP_003135) produced in HEK293T cell.
Formulation:	PBS (pH 7.3) containing 1% BSA, 50% glycerol and 0.02% sodium azide.
Concentration:	0.5 mg/ml
Purification:	Purified from mouse ascites fluids or tissue culture supernatant by affinity chromatography (protein A/G)
Conjugation:	Biotin
Storage:	Store at -20°C as received.
Stability:	Stable for 12 months from date of receipt.
Predicted Protein Size:	32.1 kDa
Gene Name:	signal sequence receptor subunit 1
Database Link:	<a href="#">NP_003135</a> <a href="#">Entrez Gene 107513 Mouse</a> <a href="#">Entrez Gene 6745 Human</a> <a href="#">P43307</a>
Background:	The signal sequence receptor (SSR) is a glycosylated endoplasmic reticulum (ER) membrane receptor associated with protein translocation across the ER membrane. The SSR consists of 2 subunits, a 34-kD glycoprotein encoded by this gene and a 22-kD glycoprotein. This gene generates several mRNA species as a result of complex alternative polyadenylation. This gene is unusual in that it utilizes arrays of polyA signal sequences that are mostly non-canonical. [provided by RefSeq, Jul 2008]

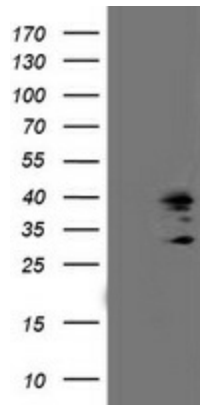


[View online »](#)

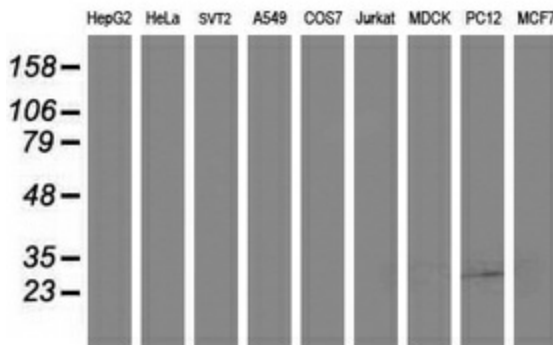
**Synonyms:** TRAPA

**Protein Families:** Druggable Genome, Transmembrane

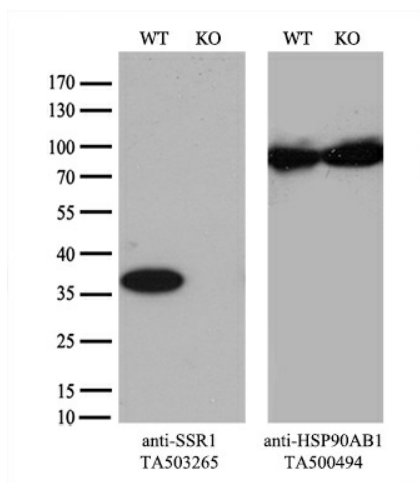
**Product images:**



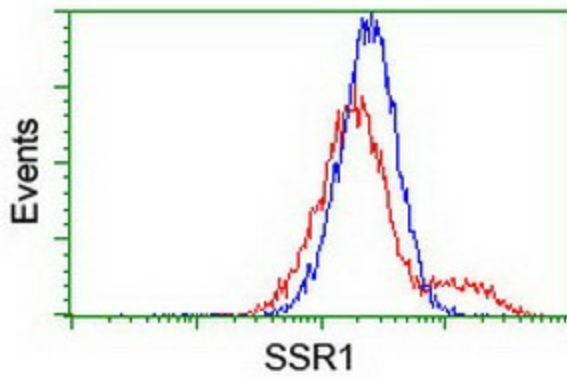
HEK293T cells were transfected with the pCMV6-ENTRY control (Left lane) or pCMV6-ENTRY SSR1 ([RC202408], Right lane) cDNA for 48 hrs and lysed. Equivalent amounts of cell lysates (5 ug per lane) were separated by SDS-PAGE and immunoblotted with anti-SSR1. Positive lysates [LY401093] (100ug) and [LC401093] (20ug) can be purchased separately from OriGene.



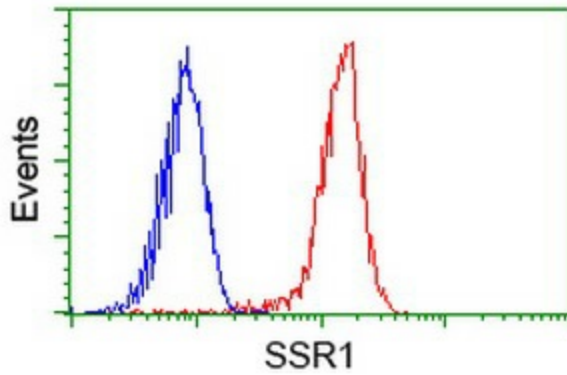
Western blot analysis of extracts (35ug) from 9 different cell lines by using anti-SSR1 monoclonal antibody (HepG2: human; HeLa: human; SVT2: mouse; A549: human; COS7: monkey; Jurkat: human; MDCK: canine; PC12: rat; MCF7: human).



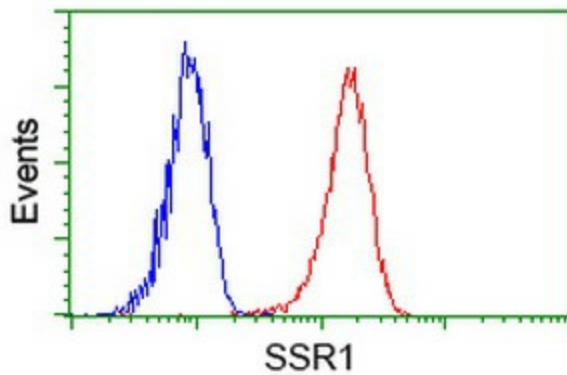
Equivalent amounts of cell lysates (10 ug per lane) of wild-type HeLa cells (WT, Cat# LC810HELA) and SSR1-Knockout HeLa cells (KO, Cat# [LC812609]) were separated by SDS-PAGE and immunoblotted with anti-SSR1 monoclonal antibody [TA503265] (1:2000). Then the blotted membrane was stripped and reprobed with anti-HSP90 antibody as a loading control.



HEK293T cells transfected with either [RC202408] overexpress plasmid (Red) or empty vector control plasmid (Blue) were immunostained by anti-SSR1 antibody ([TA503265]), and then analyzed by flow cytometry.



Flow cytometric Analysis of HeLa cells, using anti-SSR1 antibody ([TA503265]), (Red), compared to a nonspecific negative control antibody, (Blue).



Flow cytometric Analysis of Jurkat cells, using anti-SSR1 antibody ([TA503265]), (Red), compared to a nonspecific negative control antibody, (Blue).