

## Product datasheet for **TA503259S**

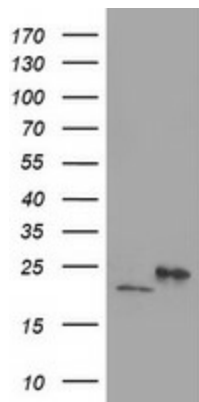
### **DHFRL1 (DHFR2) Mouse Monoclonal Antibody [Clone ID: OT11E2]**

#### **Product data:**

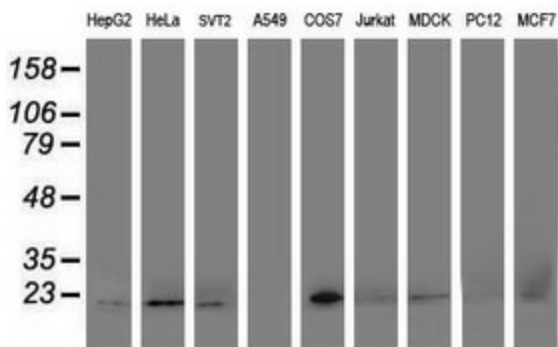
Product Type:	Primary Antibodies
Clone Name:	OT11E2
Applications:	IF, WB
Recommended Dilution:	WB 1:500~2000, IF 1:100
Reactivity:	Human, Dog, Monkey, Mouse
Host:	Mouse
Isotype:	IgG2b
Clonality:	Monoclonal
Immunogen:	Human recombinant protein fragment corresponding to amino acids 4-185 of human DHFRL1(NP_789785) produced in E.coli.
Formulation:	PBS (pH 7.3) containing 1% BSA, 50% glycerol and 0.02% sodium azide.
Concentration:	0.73 mg/ml
Purification:	Purified from mouse ascites fluids or tissue culture supernatant by affinity chromatography (protein A/G)
Conjugation:	Unconjugated
Storage:	Store at -20°C as received.
Stability:	Stable for 12 months from date of receipt.
Predicted Protein Size:	21.4 kDa
Gene Name:	dihydrofolate reductase 2
Database Link:	<a href="#">NP_789785</a> <a href="#">Entrez Gene 106996159 Monkey</a> <a href="#">Entrez Gene 200895 Human</a> <a href="#">Q86XF0</a>
Synonyms:	DHFRP4
Protein Families:	Druggable Genome



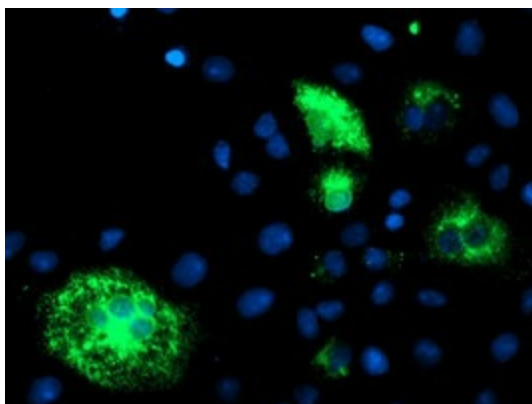
[View online »](#)

**Product images:**


HEK293T cells were transfected with the pCMV6-ENTRY control (Cat# [PS100001], Left lane) or pCMV6-ENTRY DHFRL1 (Cat# [RC208452], Right lane) cDNA for 48 hrs and lysed. Equivalent amounts of cell lysates (5 ug per lane) were separated by SDS-PAGE and immunoblotted with anti-DHFRL1 (Cat# [TA503259]). Positive lysates [LY406051] (100ug) and [LC406051] (20ug) can be purchased separately from OriGene.



Western blot analysis of extracts (35ug) from 9 different cell lines by using anti-DHFRL1 monoclonal antibody.



Anti-DHFRL1 mouse monoclonal antibody ([TA503259]) immunofluorescent staining of COS7 cells transiently transfected by pCMV6-ENTRY DHFRL1 ([RC208452]).