

Product datasheet for **TA503248BM**

PPM1B Mouse Monoclonal Antibody (HRP conjugated) [Clone ID: OTI3G9]

Product data:

Product Type:	Primary Antibodies
Clone Name:	OTI3G9
Applications:	WB
Recommended Dilution:	WB 1:2000
Reactivity:	Human, Mouse, Rat
Host:	Mouse
Isotype:	IgG2a
Clonality:	Monoclonal
Immunogen:	Full length human recombinant protein of human PPM1B(NP_002697) produced in HEK293 cell.
Formulation:	PBS (pH 7.3) containing 1% BSA, 50% glycerol.
Concentration:	0.5 mg/ml
Purification:	Purified from mouse ascites fluids or tissue culture supernatant by affinity chromatography (protein A/G)
Conjugation:	HRP
Storage:	Store at -20°C as received.
Stability:	Stable for 12 months from date of receipt.
Predicted Protein Size:	52.5 kDa
Gene Name:	protein phosphatase, Mg ²⁺ /Mn ²⁺ dependent 1B
Database Link:	NP_002697 Entrez Gene 19043 Mouse Entrez Gene 24667 Rat Entrez Gene 5495 Human O75688



[View online »](#)

Background:

The protein encoded by this gene is a member of the PP2C family of Ser/Thr protein phosphatases. PP2C family members are known to be negative regulators of cell stress response pathways. This phosphatase has been shown to dephosphorylate cyclin-dependent kinases (CDKs), and thus may be involved in cell cycle control. Overexpression of this phosphatase is reported to cause cell-growth arrest or cell death. Alternative splicing results in multiple transcript variants encoding different isoforms. Additional transcript variants have been described, but currently do not represent full-length sequences. [provided by RefSeq]

Synonyms:

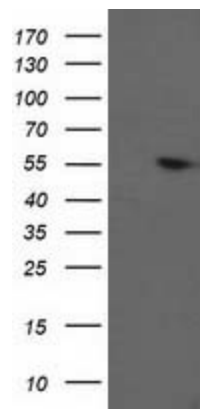
PP2C-beta; PP2C-beta-X; PP2CB; PP2CBETA; PPC2BETAX

Protein Families:

Druggable Genome, Phosphatase, Stem cell - Pluripotency

Protein Pathways:

MAPK signaling pathway

Product images:

HEK293T cells were transfected with the pCMV6-ENTRY control (Left lane) or pCMV6-ENTRY PPM1B [RC212918], Right lane) cDNA for 48 hrs and lysed. Equivalent amounts of cell lysates (5 ug per lane) were separated by SDS-PAGE and immunoblotted with anti-PPM1B. Positive lysates [LY419156] (100ug) and [LC419156] (20ug) can be purchased separately from OriGene.