

## Product datasheet for **TA503240M**

### OBFC1 (STN1) Mouse Monoclonal Antibody [Clone ID: OTI2E4]

#### Product data:

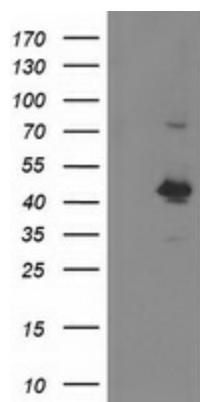
Product Type:	Primary Antibodies
Clone Name:	OTI2E4
Applications:	FC, IF, WB
Recommended Dilution:	WB 1:2000, IF 1:100, FLOW 1:100
Reactivity:	Human
Host:	Mouse
Isotype:	IgG1
Clonality:	Monoclonal
Immunogen:	Full length human recombinant protein of human OBFC1 (NP_079204) produced in HEK293T cell.
Formulation:	PBS (pH 7.3) containing 1% BSA, 50% glycerol and 0.02% sodium azide.
Concentration:	0.4 mg/ml
Purification:	Purified from mouse ascites fluids or tissue culture supernatant by affinity chromatography (protein A/G)
Conjugation:	Unconjugated
Storage:	Store at -20°C as received.
Stability:	Stable for 12 months from date of receipt.
Predicted Protein Size:	41.9 kDa
Gene Name:	STN1 subunit of CST complex
Database Link:	<a href="#">NP_079204</a> <a href="#">Entrez Gene 79991 Human</a> <a href="#">Q9H668</a>
Background:	OBFC1 and C17ORF68 (MIM 613129) are subunits of an alpha accessory factor (AAF) that stimulates the activity of DNA polymerase-alpha-primase (see MIM 176636), the enzyme that initiates DNA replication (Casteel et al., 2009 [PubMed 19119139]). OBFC1 also appears to function in a telomere-associated complex with C17ORF68 and TEN1 (C17ORF106; MIM 613130) (Miyake et al., 2009 [PubMed 19854130]). [supplied by OMIM]



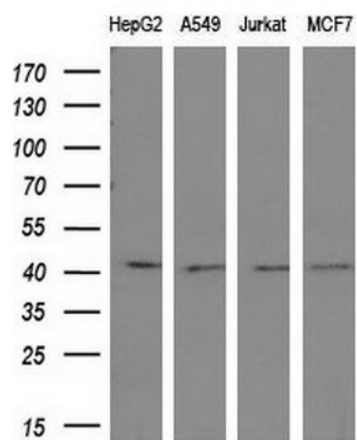
[View online »](#)

**Synonyms:** AAF-44; AAF44; bA541N10.2; RPA-32; STN1

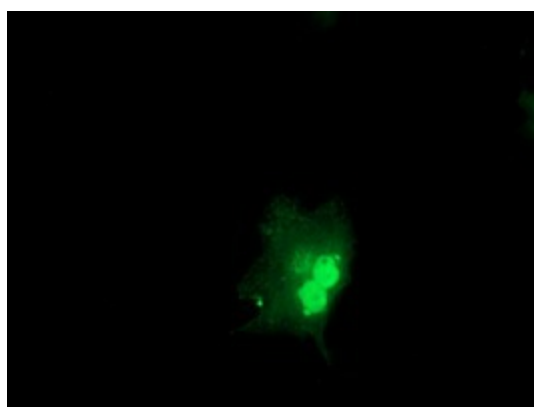
**Product images:**



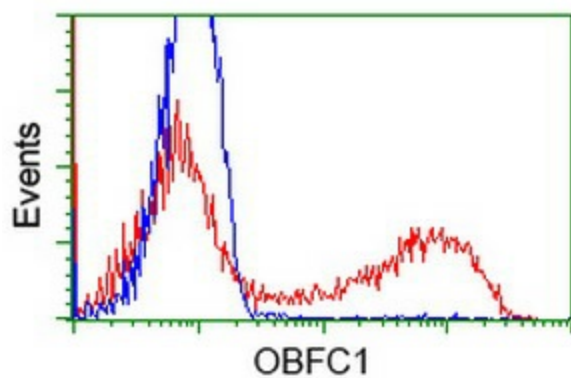
HEK293T cells were transfected with the pCMV6-ENTRY control (Cat# [PS100001], Left lane) or pCMV6-ENTRY OBFC1 (Cat# [RC200778], Right lane) cDNA for 48 hrs and lysed. Equivalent amounts of cell lysates (5 ug per lane) were separated by SDS-PAGE and immunoblotted with anti-OBFC1 (Cat# [TA503240]). Positive lysates [LY410967] (100ug) and [LC410967] (20ug) can be purchased separately from OriGene.



Western blot analysis of extracts (10ug) from 4 different cell lines by using anti-OBFC1 monoclonal antibody at 1:200 dilution.



Anti-OBFC1 mouse monoclonal antibody ([TA503240]) immunofluorescent staining of COS7 cells transiently transfected by pCMV6-ENTRY OBFC1 ([RC200778]).



HEK293T cells transfected with either [RC200778] overexpress plasmid (Red) or empty vector control plasmid (Blue) were immunostained by anti-OBFC1 antibody ([TA503240]), and then analyzed by flow cytometry.