

## Product datasheet for **TA503228BM**

### Aminoacylase 1 (ACY1) Mouse Monoclonal Antibody (HRP conjugated) [Clone ID: OTI16C1]

#### Product data:

Product Type:	Primary Antibodies
Clone Name:	OTI16C1
Applications:	FC, IHC, WB
Recommended Dilution:	WB 1:500, IHC 1:150, FLOW 1:100
Reactivity:	Human, Mouse, Rat
Host:	Mouse
Isotype:	IgG1
Clonality:	Monoclonal
Immunogen:	Full length human recombinant protein of human ACY1(NP_000657) produced in HEK293 cell.
Formulation:	PBS (pH 7.3) containing 1% BSA, 50% glycerol.
Concentration:	0.5 mg/ml
Purification:	Purified from mouse ascites fluids or tissue culture supernatant by affinity chromatography (protein A/G)
Conjugation:	HRP
Storage:	Store at -20°C as received.
Stability:	Stable for 12 months from date of receipt.
Predicted Protein Size:	45.7 kDa
Gene Name:	aminoacylase 1
Database Link:	<a href="#">NP_000657</a> <a href="#">Entrez Gene 109652 Mouse</a> <a href="#">Entrez Gene 300981 Rat</a> <a href="#">Entrez Gene 95 Human Q03154</a>



[View online »](#)

**Background:**

This gene encodes a cytosolic, homodimeric, zinc-binding enzyme that catalyzes the hydrolysis of acylated L-amino acids to L-amino acids and an acyl group, and has been postulated to function in the catabolism and salvage of acylated amino acids. This gene is located on chromosome 3p21.1, a region reduced to homozygosity in small-cell lung cancer (SCLC), and its expression has been reported to be reduced or undetectable in SCLC cell lines and tumors. The amino acid sequence of human aminoacylase-1 is highly homologous to the porcine counterpart, and this enzyme is the first member of a new family of zinc-binding enzymes. Mutations in this gene cause aminoacylase-1 deficiency, a metabolic disorder characterized by central nervous system defects and increased urinary excretion of N-acetylated amino acids. Alternative splicing of this gene results in multiple transcript variants. Read-through transcription also exists between this gene and the upstream ABHD14A (abhydrolase domain containing 14A) gene, as represented in GenelD:100526760. A related pseudogene has been identified on chromosome 18. [provided by RefSeq]

**Synonyms:**

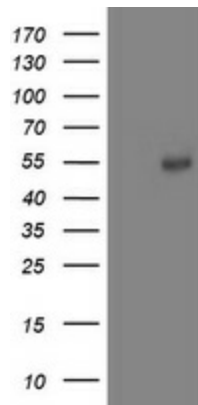
ACY-1; ACY1D; HEL-S-5

**Protein Families:**

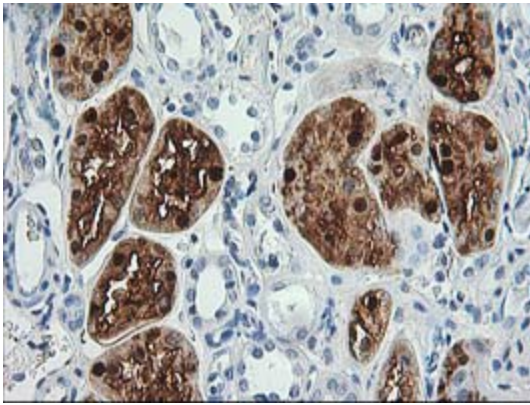
Protease

**Protein Pathways:**

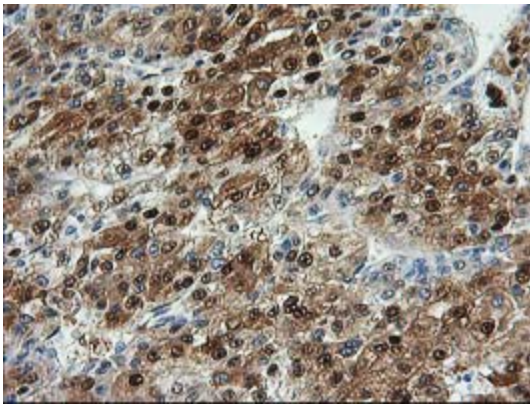
Arginine and proline metabolism, Metabolic pathways

**Product images:**

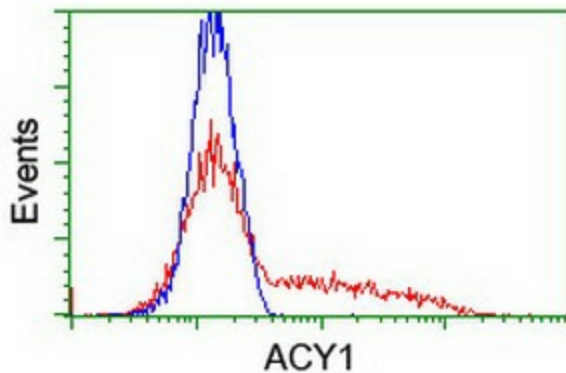
HEK293T cells were transfected with the pCMV6-ENTRY control (Left lane) or pCMV6-ENTRY ACY1 ([RC201284], Right lane) cDNA for 48 hrs and lysed. Equivalent amounts of cell lysates (5 ug per lane) were separated by SDS-PAGE and immunoblotted with anti-ACY1. Positive lysates [LY424578] (100ug) and [LC424578] (20ug) can be purchased separately from OriGene.



Immunohistochemical staining of paraffin-embedded Human Kidney tissue within the normal limits using anti-ACY1 mouse monoclonal antibody. (Heat-induced epitope retrieval by 10mM citric buffer, pH6.0, 100°C for 10min, [TA503228])



Immunohistochemical staining of paraffin-embedded Carcinoma of Human liver tissue using anti-ACY1 mouse monoclonal antibody. (Heat-induced epitope retrieval by 10mM citric buffer, pH6.0, 100°C for 10min, [TA503228])



HEK293T cells transfected with either [RC201284] overexpress plasmid (Red) or empty vector control plasmid (Blue) were immunostained by anti-ACY1 antibody ([TA503228]), and then analyzed by flow cytometry.