

Product datasheet for **TA503224S**

GDAP1L1 Mouse Monoclonal Antibody [Clone ID: OTI1A5]

Product data:

Product Type:	Primary Antibodies
Clone Name:	OTI1A5
Applications:	IF, WB
Recommended Dilution:	WB 1:2000, IF 1:100
Reactivity:	Human, Mouse, Rat
Host:	Mouse
Isotype:	IgG2a
Clonality:	Monoclonal
Immunogen:	Full length human recombinant protein of human GDAP1L1 (NP_076939) produced in HEK293T cell.
Formulation:	PBS (pH 7.3) containing 1% BSA, 50% glycerol and 0.02% sodium azide.
Concentration:	0.86 mg/ml
Purification:	Purified from mouse ascites fluids or tissue culture supernatant by affinity chromatography (protein A/G)
Conjugation:	Unconjugated
Storage:	Store at -20°C as received.
Stability:	Stable for 12 months from date of receipt.
Predicted Protein Size:	41.8 kDa
Gene Name:	ganglioside induced differentiation associated protein 1 like 1
Database Link:	NP_076939 Entrez Gene 228858 MouseEntrez Gene 311616 RatEntrez Gene 78997 Human Q96MZ0



[View online »](#)

Background:

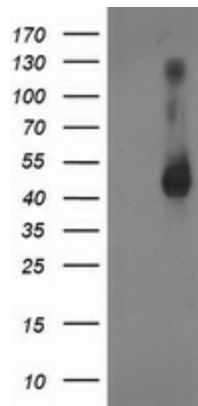
The ganglioside GD3 synthase causes cell differentiation with neurite sprouting when transfected into the mouse neuroblastoma cell line Neuro2a. After differentiation, the expression of several genes is upregulated, including one that encodes a protein termed ganglioside-induced differentiation-associated protein 1 (Gdap1). A similar gene was found in humans, and mutations in the human gene are associated with Charcot-Marie-Tooth type 4A disease. The protein encoded by this gene is similar in sequence to the human GDAP1 protein. [provided by RefSeq]. COMPLETENESS: complete on the 3' end.

Synonyms:

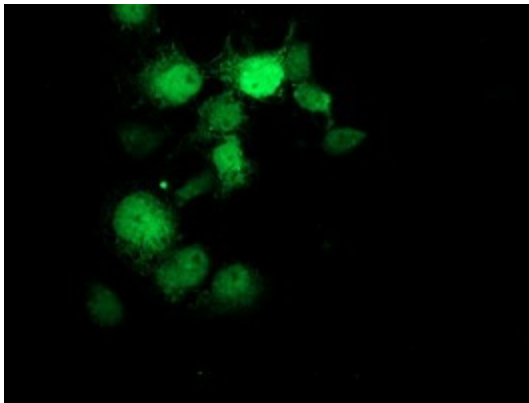
dj881L22.1; dj995J12.1.1

Protein Families:

Transmembrane

Product images:

HEK293T cells were transfected with the pCMV6-ENTRY control (Left lane) or pCMV6-ENTRY GDAP1L1 ([RC200976], Right lane) cDNA for 48 hrs and lysed. Equivalent amounts of cell lysates (5 ug per lane) were separated by SDS-PAGE and immunoblotted with anti-GDAP1L1. Positive lysates [LY411411] (100ug) and [LC411411] (20ug) can be purchased separately from OriGene.



Anti-GDAP1L1 mouse monoclonal antibody ([TA503224]) immunofluorescent staining of COS7 cells transiently transfected by pCMV6-ENTRY GDAP1L1 ([RC200976]).