

## Product datasheet for **TA503222S**

### **TOMM34 Mouse Monoclonal Antibody [Clone ID: OTI2A6]**

#### **Product data:**

<b>Product Type:</b>	Primary Antibodies
<b>Clone Name:</b>	OTI2A6
<b>Applications:</b>	FC, IF, WB
<b>Recommended Dilution:</b>	WB 1:500~2000, IF 1:100, FLOW 1:100
<b>Reactivity:</b>	Human, Monkey, Mouse, Rat
<b>Host:</b>	Mouse
<b>Isotype:</b>	IgG1
<b>Clonality:</b>	Monoclonal
<b>Immunogen:</b>	Full length human recombinant protein of human TOMM34(NP_006800) produced in HEK293 cell.
<b>Formulation:</b>	PBS (pH 7.3) containing 1% BSA, 50% glycerol and 0.02% sodium azide.
<b>Concentration:</b>	0.5 mg/ml
<b>Purification:</b>	Purified from mouse ascites fluids or tissue culture supernatant by affinity chromatography (protein A/G)
<b>Conjugation:</b>	Unconjugated
<b>Storage:</b>	Store at -20°C as received.
<b>Stability:</b>	Stable for 12 months from date of receipt.
<b>Predicted Protein Size:</b>	34.4 kDa
<b>Gene Name:</b>	translocase of outer mitochondrial membrane 34
<b>Database Link:</b>	<a href="#">NP_006800</a> <a href="#">Entrez Gene 711965 Monkey</a> <a href="#">Entrez Gene 10953 Human</a> <a href="#">Q15785</a>
<b>Background:</b>	The protein encoded by this gene is involved in the import of precursor proteins into mitochondria. The encoded protein has a chaperone-like activity, binding the mature portion of unfolded proteins and aiding their import into mitochondria. This protein, which is found in the cytoplasm and sometimes associated with the outer mitochondrial membrane, has a weak ATPase activity and contains 6 TPR repeats. [provided by RefSeq]

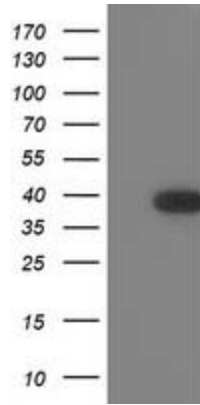


[View online »](#)

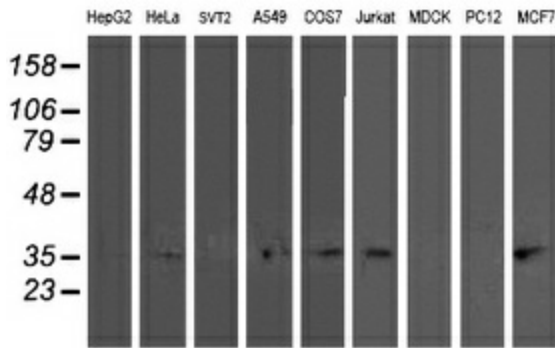
**Synonyms:** HTOM34P; TOM34; URCC3

**Protein Families:** Druggable Genome

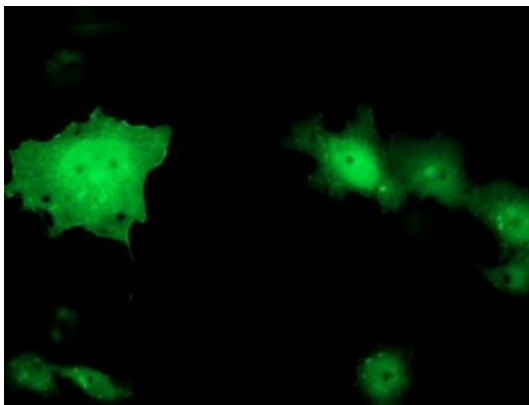
**Product images:**



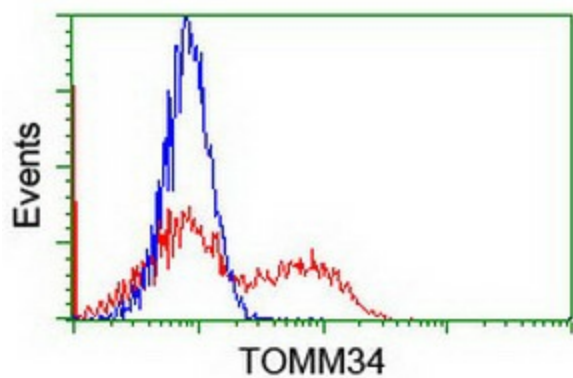
HEK293T cells were transfected with the pCMV6-ENTRY control (Left lane) or pCMV6-ENTRY TOMM34 ([RC201083], Right lane) cDNA for 48 hrs and lysed. Equivalent amounts of cell lysates (5 ug per lane) were separated by SDS-PAGE and immunoblotted with anti-TOMM34. Positive lysates [LY416405] (100ug) and [LC416405] (20ug) can be purchased separately from OriGene.



Western blot analysis of extracts (35ug) from 9 different cell lines by using anti-TOMM34 monoclonal antibody.



Anti-TOMM34 mouse monoclonal antibody ([TA503222]) immunofluorescent staining of COS7 cells transiently transfected by pCMV6-ENTRY TOMM34 ([RC201083]).



HEK293T cells transfected with either [RC201083] overexpress plasmid (Red) or empty vector control plasmid (Blue) were immunostained by anti-TOMM34 antibody ([TA503222]), and then analyzed by flow cytometry.