

## Product datasheet for **TA503210AM**

### **CARKL (SHPK) Mouse Monoclonal Antibody (Biotin conjugated) [Clone ID: OTI3D7]**

#### **Product data:**

Product Type:	Primary Antibodies
Clone Name:	OTI3D7
Applications:	IF, IHC, WB
Recommended Dilution:	WB 1:500, IHC 1:150, IF 1:100
Reactivity:	Human, Mouse, Rat
Host:	Mouse
Isotype:	IgG1
Clonality:	Monoclonal
Immunogen:	Full length human recombinant protein of human SHPK(NP_037408) produced in HEK293T cell.
Formulation:	PBS (pH 7.3) containing 1% BSA, 50% glycerol and 0.02% sodium azide.
Concentration:	0.5 mg/ml
Purification:	Purified from mouse ascites fluids or tissue culture supernatant by affinity chromatography (protein A/G)
Conjugation:	Biotin
Storage:	Store at -20°C as received.
Stability:	Stable for 12 months from date of receipt.
Predicted Protein Size:	51.3 kDa
Gene Name:	sedoheptulokinase
Database Link:	<a href="#">NP_037408</a> <a href="#">Entrez Gene 74637 Mouse</a> <a href="#">Entrez Gene 287479 Rat</a> <a href="#">Entrez Gene 23729 Human</a> <a href="#">Q9UHJ6</a>



[View online »](#)

**Background:**

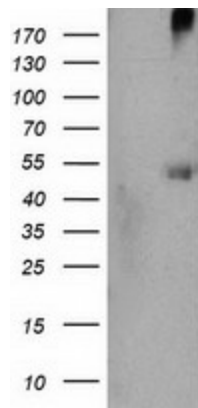
The protein encoded by this gene has weak homology to several carbohydrate kinases, a class of proteins involved in the phosphorylation of sugars as they enter a cell, inhibiting return across the cell membrane. Sequence variation between this novel gene and known carbohydrate kinases suggests the possibility of a different substrate, cofactor or changes in kinetic properties distinguishing it from other carbohydrate kinases. The gene resides in a region commonly deleted in cystinosis patients, suggesting a role as a modifier for the cystinosis phenotype. The genomic region is also rich in Alu repetitive sequences, frequently involved in chromosomal rearrangements. [provided by RefSeq]. COMPLETENESS: complete on the 3' end.

**Synonyms:**

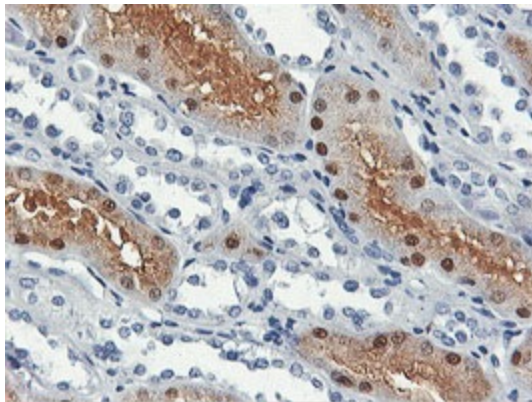
CARKL; SHK

**Protein Families:**

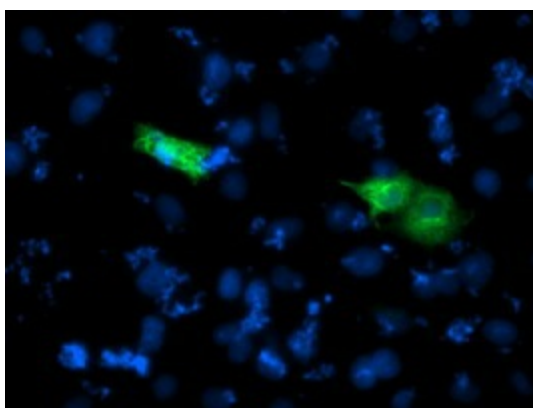
Druggable Genome

**Product images:**

HEK293T cells were transfected with the pCMV6-ENTRY control (Cat# [PS100001], Left lane) or pCMV6-ENTRY SHPK (Cat# [RC204421], Right lane) cDNA for 48 hrs and lysed. Equivalent amounts of cell lysates (5 ug per lane) were separated by SDS-PAGE and immunoblotted with anti-SHPK (Cat# [TA503210]). Positive lysates [LY415695] (100ug) and [LC415695] (20ug) can be purchased separately from OriGene.



Immunohistochemical staining of paraffin-embedded Human Kidney tissue within the normal limits using anti-SHPK mouse monoclonal antibody. (Heat-induced epitope retrieval by 10mM citric buffer, pH6.0, 100°C for 10min, [TA503210])



Anti-SHPK mouse monoclonal antibody ([TA503210]) immunofluorescent staining of COS7 cells transiently transfected by pCMV6-ENTRY SHPK ([RC204421]).