

## Product datasheet for **TA503209BM**

### **CARKL (SHPK) Mouse Monoclonal Antibody (HRP conjugated) [Clone ID: OTI1D2]**

#### **Product data:**

Product Type:	Primary Antibodies
Clone Name:	OTI1D2
Applications:	IF, WB
Recommended Dilution:	WB 1:500~2000, IF 1:100
Reactivity:	Human, Mouse, Rat
Host:	Mouse
Isotype:	IgG2a
Clonality:	Monoclonal
Immunogen:	Full length human recombinant protein of human SHPK(NP_037408) produced in HEK293T cell.
Formulation:	PBS (pH 7.3) containing 1% BSA, 50% glycerol.
Concentration:	0.5 mg/ml
Purification:	Purified from mouse ascites fluids or tissue culture supernatant by affinity chromatography (protein A/G)
Conjugation:	HRP
Storage:	Store at -20°C as received.
Stability:	Stable for 12 months from date of receipt.
Predicted Protein Size:	51.3 kDa
Gene Name:	sedoheptulokinase
Database Link:	<a href="#">NP_037408</a> <a href="#">Entrez Gene 74637 Mouse</a> <a href="#">Entrez Gene 287479 Rat</a> <a href="#">Entrez Gene 23729 Human</a> <a href="#">Q9UHJ6</a>



[View online »](#)

**Background:**

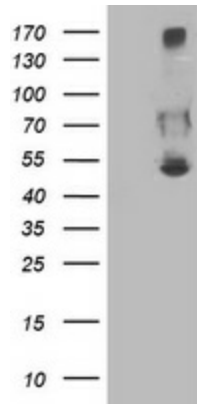
The protein encoded by this gene has weak homology to several carbohydrate kinases, a class of proteins involved in the phosphorylation of sugars as they enter a cell, inhibiting return across the cell membrane. Sequence variation between this novel gene and known carbohydrate kinases suggests the possibility of a different substrate, cofactor or changes in kinetic properties distinguishing it from other carbohydrate kinases. The gene resides in a region commonly deleted in cystinosis patients, suggesting a role as a modifier for the cystinosis phenotype. The genomic region is also rich in Alu repetitive sequences, frequently involved in chromosomal rearrangements. [provided by RefSeq, Jul 2008]

**Synonyms:**

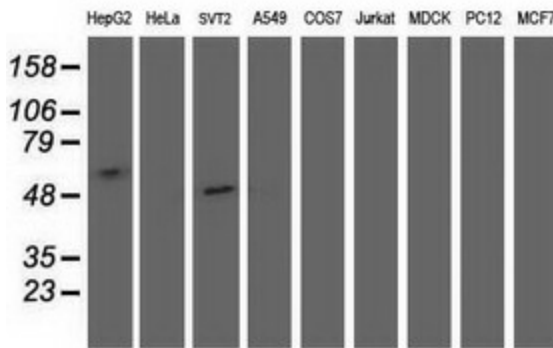
CARKL; SHK

**Protein Families:**

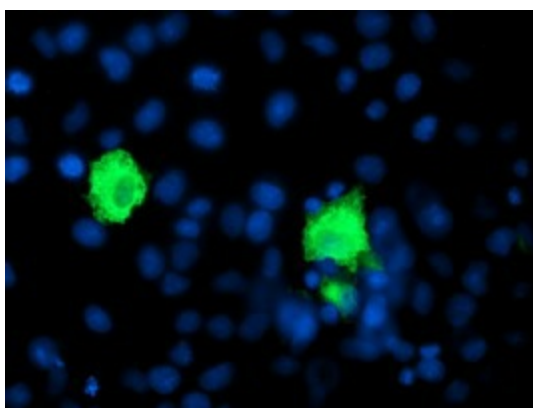
Druggable Genome

**Product images:**


HEK293T cells were transfected with the pCMV6-ENTRY control (Left lane) or pCMV6-ENTRY SHPK ([RC204421], Right lane) cDNA for 48 hrs and lysed. Equivalent amounts of cell lysates (5 ug per lane) were separated by SDS-PAGE and immunoblotted with anti-SHPK. Positive lysates [LY415695] (100ug) and [LC415695] (20ug) can be purchased separately from OriGene.



Western blot analysis of extracts (35ug) from 9 different cell lines by using anti-SHPK monoclonal antibody (HepG2: human; HeLa: human; SVT2: mouse; A549: human; COS7: monkey; Jurkat: human; MDCK: canine; PC12: rat; MCF7: human).



Anti-SHPK mouse monoclonal antibody ([TA503209]) immunofluorescent staining of COS7 cells transiently transfected by pCMV6-ENTRY SHPK ([RC204421]).