

Product datasheet for **TA503207BM**

GATM Mouse Monoclonal Antibody (HRP conjugated) [Clone ID: OTI1E3]

Product data:

Product Type:	Primary Antibodies
Clone Name:	OTI1E3
Applications:	FC, IF, IHC, WB
Recommended Dilution:	WB 1:2000, IHC 1:150, IF 1:100, FLOW 1:100
Reactivity:	Human, Mouse, Rat
Host:	Mouse
Isotype:	IgG2a
Clonality:	Monoclonal
Immunogen:	Full length human recombinant protein of human GATM(NP_001473) produced in HEK293T cell.
Formulation:	PBS (pH 7.3) containing 1% BSA, 50% glycerol.
Concentration:	0.5 mg/ml
Purification:	Purified from mouse ascites fluids or tissue culture supernatant by affinity chromatography (protein A/G)
Conjugation:	HRP
Storage:	Store at -20°C as received.
Stability:	Stable for 12 months from date of receipt.
Predicted Protein Size:	44.2 kDa
Gene Name:	glycine amidinotransferase
Database Link:	NP_001473 Entrez Gene 67092 Mouse Entrez Gene 81660 Rat Entrez Gene 2628 Human P50440
Background:	This gene encodes a mitochondrial enzyme that belongs to the amidinotransferase family. This enzyme is involved in creatine biosynthesis, whereby it catalyzes the transfer of a guanido group from L-arginine to glycine, resulting in guanidinoacetic acid, the immediate precursor of creatine. Mutations in this gene cause arginine:glycine amidinotransferase deficiency, an inborn error of creatine synthesis characterized by mental retardation, language impairment, and behavioral disorders. [provided by RefSeq]



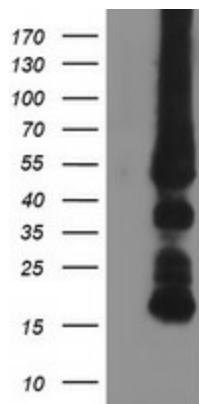
[View online »](#)

Synonyms: AGAT; AT; CCDS3

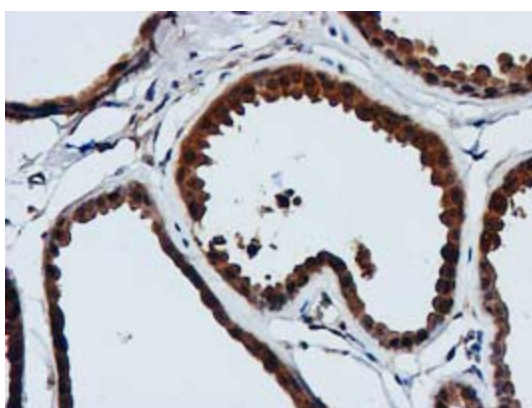
Protein Families: Druggable Genome

Protein Pathways: Arginine and proline metabolism, Glycine, serine and threonine metabolism, Metabolic pathways

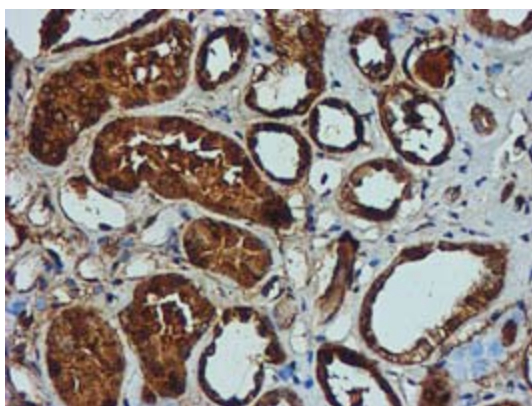
Product images:



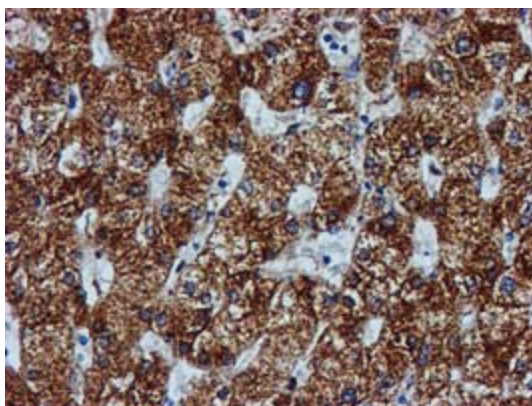
HEK293T cells were transfected with the pCMV6-ENTRY control (Cat# [PS100001], Left lane) or pCMV6-ENTRY GATM (Cat# [RC200474], Right lane) cDNA for 48 hrs and lysed. Equivalent amounts of cell lysates (5 ug per lane) were separated by SDS-PAGE and immunoblotted with anti-GATM (Cat# [TA503207]). Positive lysates [LY419923] (100ug) and [LC419923] (20ug) can be purchased separately from OriGene.



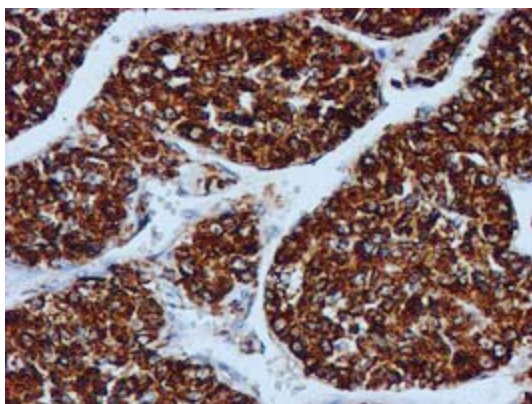
Immunohistochemical staining of paraffin-embedded Human breast tissue within the normal limits using anti-GATM mouse monoclonal antibody. (Heat-induced epitope retrieval by 10mM citric buffer, pH6.0, 100°C for 10min, [TA503207])



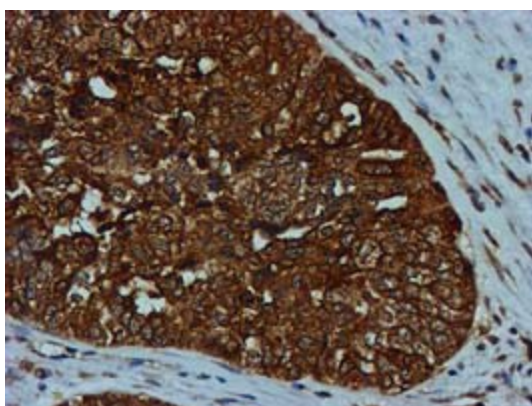
Immunohistochemical staining of paraffin-embedded Human Kidney tissue within the normal limits using anti-GATM mouse monoclonal antibody. (Heat-induced epitope retrieval by 10mM citric buffer, pH6.0, 100°C for 10min, [TA503207])



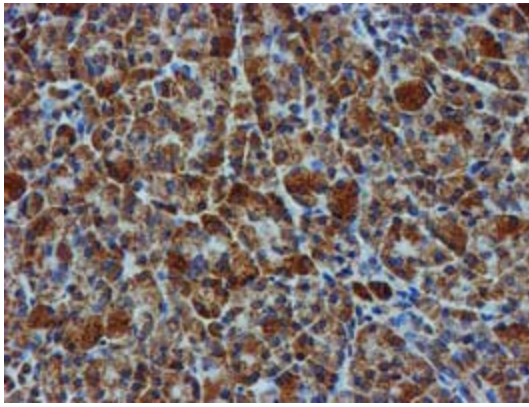
Immunohistochemical staining of paraffin-embedded Human liver tissue within the normal limits using anti-GATM mouse monoclonal antibody. (Heat-induced epitope retrieval by 10mM citric buffer, pH6.0, 100°C for 10min, [TA503207])



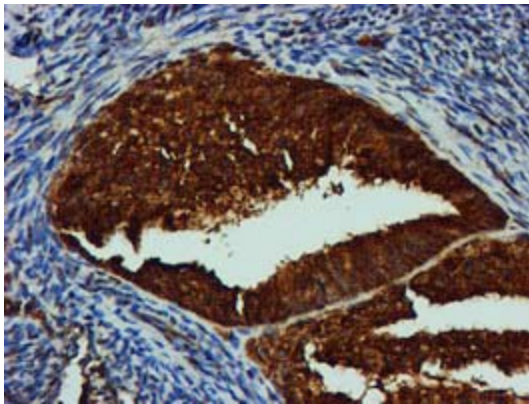
Immunohistochemical staining of paraffin-embedded Carcinoma of Human liver tissue using anti-GATM mouse monoclonal antibody. (Heat-induced epitope retrieval by 10mM citric buffer, pH6.0, 100°C for 10min, [TA503207])



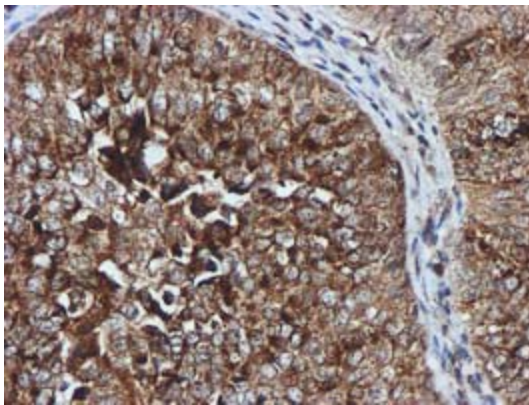
Immunohistochemical staining of paraffin-embedded Adenocarcinoma of Human ovary tissue using anti-GATM mouse monoclonal antibody. (Heat-induced epitope retrieval by 10mM citric buffer, pH6.0, 100°C for 10min, [TA503207])



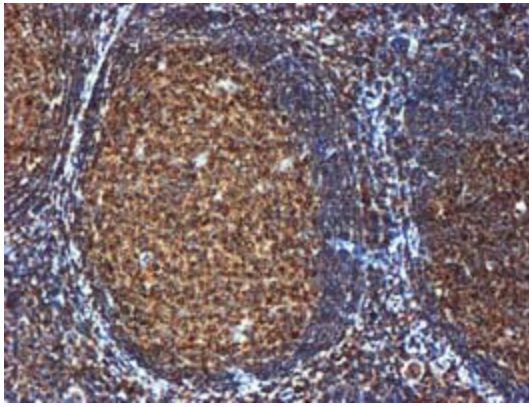
Immunohistochemical staining of paraffin-embedded Human pancreas tissue within the normal limits using anti-GATM mouse monoclonal antibody. (Heat-induced epitope retrieval by 10mM citric buffer, pH6.0, 100°C for 10min, [TA503207])



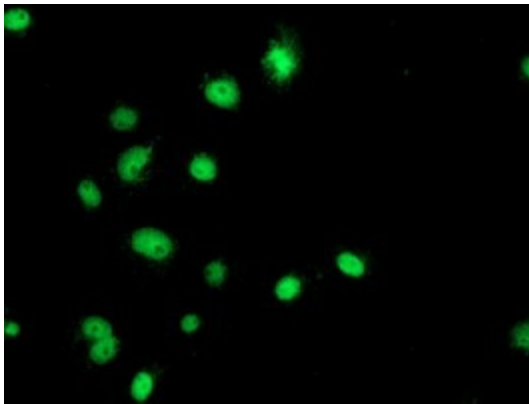
Immunohistochemical staining of paraffin-embedded Adenocarcinoma of Human endometrium tissue using anti-GATM mouse monoclonal antibody. (Heat-induced epitope retrieval by 10mM citric buffer, pH6.0, 100°C for 10min, [TA503207])



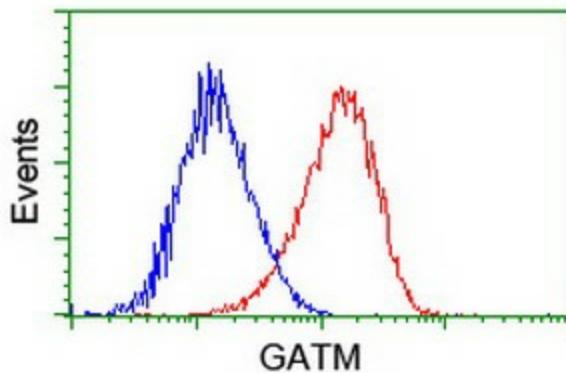
Immunohistochemical staining of paraffin-embedded Carcinoma of Human bladder tissue using anti-GATM mouse monoclonal antibody. (Heat-induced epitope retrieval by 10mM citric buffer, pH6.0, 100°C for 10min, [TA503207])



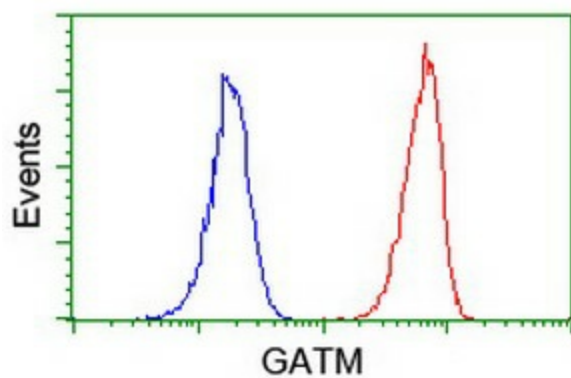
Immunohistochemical staining of paraffin-embedded Human tonsil within the normal limits using anti-GATM mouse monoclonal antibody. (Heat-induced epitope retrieval by 10mM citric buffer, pH6.0, 100°C for 10min, [TA503207])



Anti-GATM mouse monoclonal antibody ([TA503207]) immunofluorescent staining of COS7 cells transiently transfected by pCMV6-ENTRY GATM ([RC200474]).



Flow cytometric Analysis of Hela cells, using anti-GATM antibody ([TA503207]), (Red), compared to a nonspecific negative control antibody, (Blue).



Flow cytometric Analysis of Jurkat cells, using anti-GATM antibody ([TA503207]), (Red), compared to a nonspecific negative control antibody, (Blue).