

## Product datasheet for **TA503204BM**

### **Nudel (NDEL1) Mouse Monoclonal Antibody (HRP conjugated) [Clone ID: OTI3B9]**

#### **Product data:**

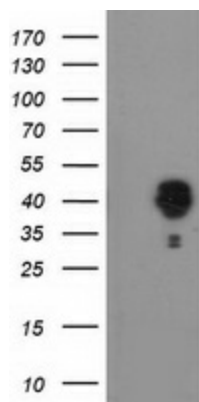
<b>Product Type:</b>	Primary Antibodies
<b>Clone Name:</b>	OTI3B9
<b>Applications:</b>	FC, IF, IHC, WB
<b>Recommended Dilution:</b>	WB 1:500~2000, IHC 1:150, IF 1:100, FLOW 1:100
<b>Reactivity:</b>	Human, Mouse, Rat
<b>Host:</b>	Mouse
<b>Isotype:</b>	IgG2a
<b>Clonality:</b>	Monoclonal
<b>Immunogen:</b>	Full length human recombinant protein of human NDEL1(NP_001020750) produced in HEK293 cell.
<b>Formulation:</b>	PBS (pH 7.3) containing 1% BSA, 50% glycerol.
<b>Concentration:</b>	0.5 mg/ml
<b>Purification:</b>	Purified from mouse ascites fluids or tissue culture supernatant by affinity chromatography (protein A/G)
<b>Conjugation:</b>	HRP
<b>Storage:</b>	Store at -20°C as received.
<b>Stability:</b>	Stable for 12 months from date of receipt.
<b>Predicted Protein Size:</b>	36.9 kDa
<b>Gene Name:</b>	nudE neurodevelopment protein 1 like 1
<b>Database Link:</b>	<a href="#">NP_001020750</a> <a href="#">Entrez Gene 83431 Mouse</a> <a href="#">Entrez Gene 170845 Rat</a> <a href="#">Entrez Gene 81565 Human</a> <a href="#">Q9GZM8</a>
<b>Background:</b>	This gene encodes a thiol-activated peptidase that is phosphorylated in M phase of the cell cycle. Phosphorylation regulates the cell cycle-dependent distribution of this protein, with a fraction of the protein bound strongly to centrosomes in interphase and localized to mitotic spindles in early M phase. Overall, this protein plays a role in nervous system development. Alternate transcriptional splice variants, encoding different isoforms, have been characterized. [provided by RefSeq]



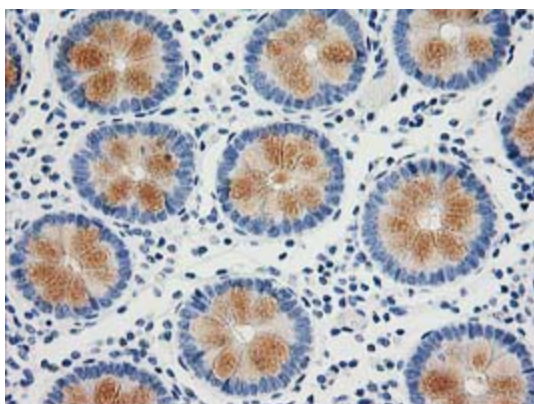
[View online »](#)

Synonyms: EOPA; MITAP1; NDE1L1; NDE2; NUDEL

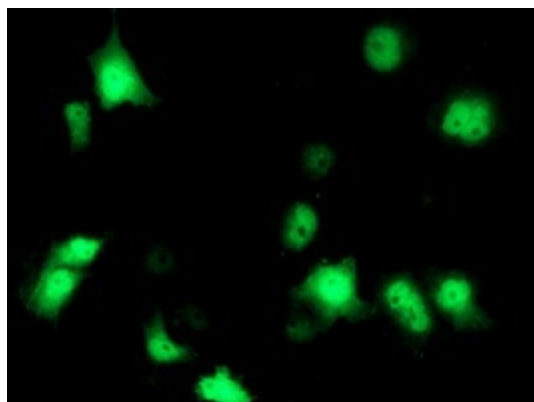
**Product images:**



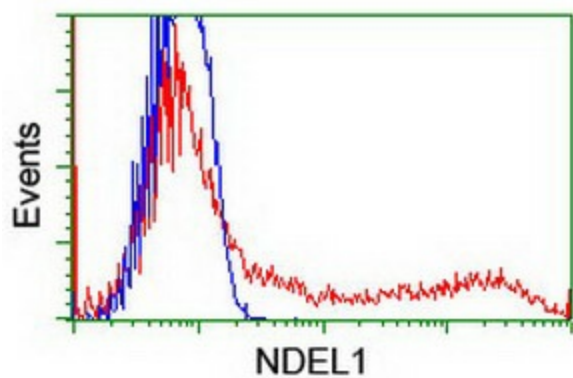
HEK293T cells were transfected with the pCMV6-ENTRY control (Left lane) or pCMV6-ENTRY NDEL1 ([RC212323], Right lane) cDNA for 48 hrs and lysed. Equivalent amounts of cell lysates (5 ug per lane) were separated by SDS-PAGE and immunoblotted with anti-NDEL1. Positive lysates [LY422448] (100ug) and [LC422448] (20ug) can be purchased separately from OriGene.



Immunohistochemical staining of paraffin-embedded Human colon tissue within the normal limits using anti-NDEL1 mouse monoclonal antibody. (Heat-induced epitope retrieval by 10mM citric buffer, pH6.0, 100°C for 10min, [TA503204])



Anti-NDEL1 mouse monoclonal antibody ([TA503204]) immunofluorescent staining of COS7 cells transiently transfected by pCMV6-ENTRY NDEL1 ([RC212323]).



HEK293T cells transfected with either [RC212323] overexpress plasmid (Red) or empty vector control plasmid (Blue) were immunostained by anti-NDEL1 antibody ([TA503204]), and then analyzed by flow cytometry.