

## Product datasheet for **TA503203AM**

### **EBP1 (PA2G4) Mouse Monoclonal Antibody (Biotin conjugated) [Clone ID: OTI1D3]**

#### **Product data:**

Product Type:	Primary Antibodies
Clone Name:	OTI1D3
Applications:	WB
Recommended Dilution:	WB 1:2000
Reactivity:	Human, Mouse, Rat
Host:	Mouse
Isotype:	IgG1
Clonality:	Monoclonal
Immunogen:	Full length human recombinant protein of human PA2G4 (NP_006182) produced in HEK293T cell.
Formulation:	PBS (pH 7.3) containing 1% BSA, 50% glycerol and 0.02% sodium azide.
Concentration:	0.5 mg/ml
Purification:	Purified from mouse ascites fluids or tissue culture supernatant by affinity chromatography (protein A/G)
Conjugation:	Biotin
Storage:	Store at -20°C as received.
Stability:	Stable for 12 months from date of receipt.
Predicted Protein Size:	43.6 kDa
Gene Name:	proliferation-associated 2G4
Database Link:	<a href="#">NP_006182</a> <a href="#">Entrez Gene 18813 Mouse</a> <a href="#">Entrez Gene 288778 Rat</a> <a href="#">Entrez Gene 5036 Human</a> <a href="#">Q9UQ80</a>



[View online »](#)

**Background:**

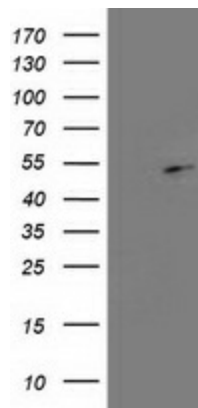
This gene encodes an RNA-binding protein that is involved in growth regulation. This protein is present in pre-ribosomal ribonucleoprotein complexes and may be involved in ribosome assembly and the regulation of intermediate and late steps of rRNA processing. This protein can interact with the cytoplasmic domain of the ErbB3 receptor and may contribute to transducing growth regulatory signals. This protein is also a transcriptional co-repressor of androgen receptor-regulated genes and other cell cycle regulatory genes through its interactions with histone deacetylases. This protein has been implicated in growth inhibition and the induction of differentiation of human cancer cells. Six pseudogenes, located on chromosomes 3, 6, 9, 18, 20 and X, have been identified. [provided by RefSeq]

**Synonyms:**

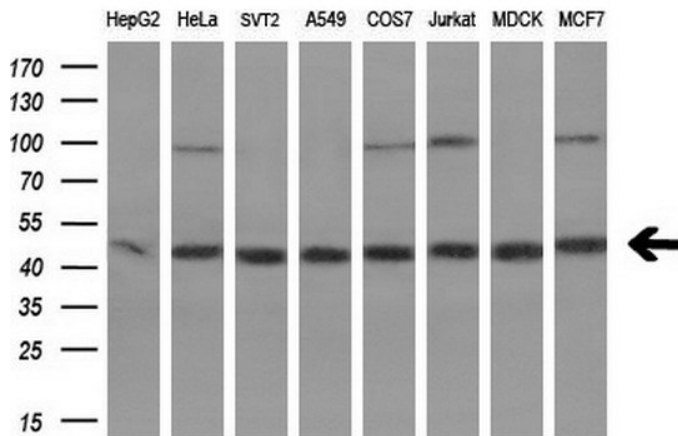
EBP1; HG4-1; p38-2G4

**Protein Families:**

Druggable Genome, Protease, Stem cell - Pluripotency

**Product images:**


HEK293T cells were transfected with the pCMV6-ENTRY control (Cat# [PS100001], Left lane) or pCMV6-ENTRY PA2G4 (Cat# [RC210230], Right lane) cDNA for 48 hrs and lysed. Equivalent amounts of cell lysates (5 ug per lane) were separated by SDS-PAGE and immunoblotted with anti-PA2G4(Cat# [TA503203]). Positive lysates [LY416812] (100ug) and [LC416812] (20ug) can be purchased separately from OriGene.



Western blot analysis of extracts (10ug) from 8 different cell lines by using anti-PA2G4 monoclonal antibody (1:200).