

Product datasheet for **TA503202M**

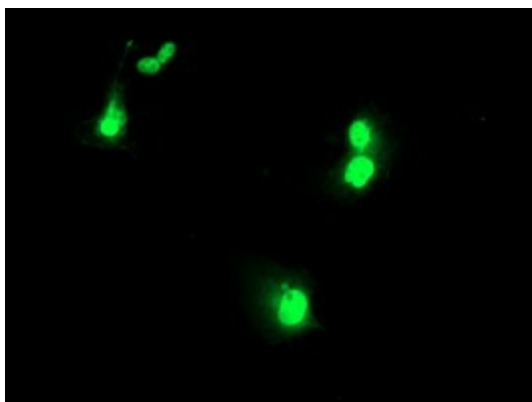
UBOX5 Mouse Monoclonal Antibody [Clone ID: OTI5A2]

Product data:

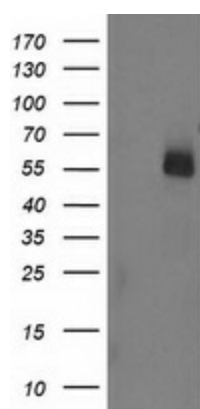
Product Type:	Primary Antibodies
Clone Name:	OTI5A2
Applications:	FC, IF, WB
Recommended Dilution:	WB 1:2000, IF 1:100, FLOW 1:100
Reactivity:	Human
Host:	Mouse
Isotype:	IgG2a
Clonality:	Monoclonal
Immunogen:	Human recombinant protein fragment corresponding to amino acids 1-130 and 419-487 of human UBOX5 (NP_955447) produced in E.coli.
Formulation:	PBS (pH 7.3) containing 1% BSA, 50% glycerol and 0.02% sodium azide.
Concentration:	1.1 mg/ml
Purification:	Purified from mouse ascites fluids or tissue culture supernatant by affinity chromatography (protein A/G)
Conjugation:	Unconjugated
Storage:	Store at -20°C as received.
Stability:	Stable for 12 months from date of receipt.
Predicted Protein Size:	53.1 kDa
Gene Name:	U-box domain containing 5
Database Link:	NP_955447 Entrez Gene 22888 Human O94941
Synonyms:	hUIP5; RNF37; UBCE7IP5; UIP5
Protein Families:	Druggable Genome
Protein Pathways:	Ubiquitin mediated proteolysis


[View online »](#)

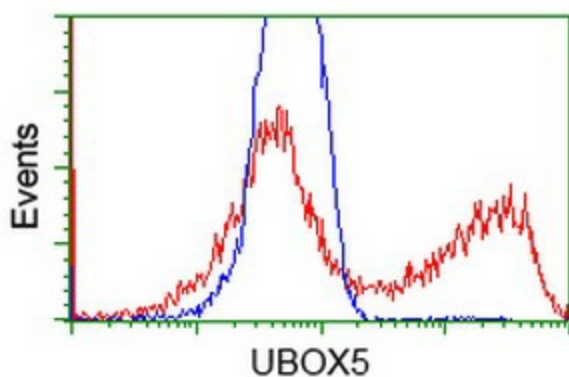
Product images:



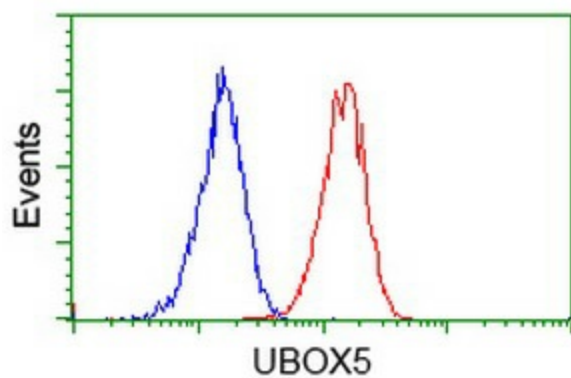
Anti-UBOX5 mouse monoclonal antibody ([TA503202]) immunofluorescent staining of COS7 cells transiently transfected by pCMV6-ENTRY UBOX5 ([RC208505]).



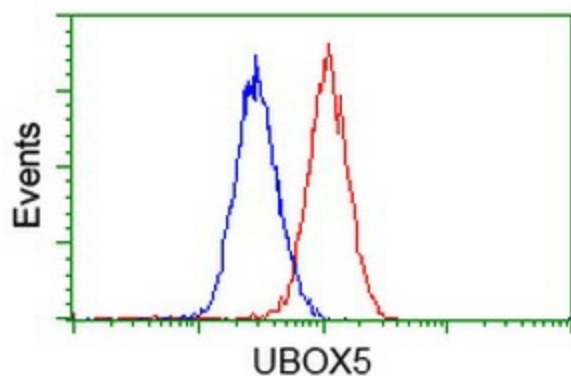
HEK293T cells were transfected with the pCMV6-ENTRY control (Left lane) or pCMV6-ENTRY UBOX5 ([RC208505], Right lane) cDNA for 48 hrs and lysed. Equivalent amounts of cell lysates (5 ug per lane) were separated by SDS-PAGE and immunoblotted with anti-UBOX5.



HEK293T cells transfected with either [RC208505] overexpress plasmid (Red) or empty vector control plasmid (Blue) were immunostained by anti-UBOX5 antibody ([TA503202]), and then analyzed by flow cytometry.



Flow cytometric Analysis of Jurkat cells, using anti-UBOX5 antibody ([TA503202]), (Red), compared to a nonspecific negative control antibody, (Blue).



Flow cytometric Analysis of Hela cells, using anti-UBOX5 antibody ([TA503202]), (Red), compared to a nonspecific negative control antibody, (Blue).