

## Product datasheet for **TA503177AM**

### PHF21B Mouse Monoclonal Antibody (Biotin conjugated) [Clone ID: OTI3D1]

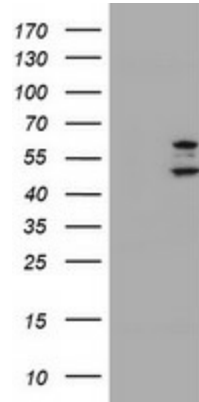
#### Product data:

Product Type:	Primary Antibodies
Clone Name:	OTI3D1
Applications:	FC, IF, IHC, WB
Recommended Dilution:	WB 1:2000, IHC 1:150, IF 1:100, FLOW 1:100
Reactivity:	Human, Mouse, Rat
Host:	Mouse
Isotype:	IgG2b
Clonality:	Monoclonal
Immunogen:	Full length human recombinant protein of human PHF21B(NP_612424) produced in HEK293T cell.
Formulation:	PBS (pH 7.3) containing 1% BSA, 50% glycerol and 0.02% sodium azide.
Concentration:	0.5 mg/ml
Purification:	Purified from mouse ascites fluids or tissue culture supernatant by affinity chromatography (protein A/G)
Conjugation:	Biotin
Storage:	Store at -20°C as received.
Stability:	Stable for 12 months from date of receipt.
Predicted Protein Size:	57.3 kDa
Gene Name:	PHD finger protein 21B
Database Link:	<a href="#">NP_612424</a> <a href="#">Entrez Gene 112885 Human</a> <a href="#">Q96EK2</a>
Synonyms:	BHC80L; PHF4
Protein Families:	Druggable Genome, Transcription Factors

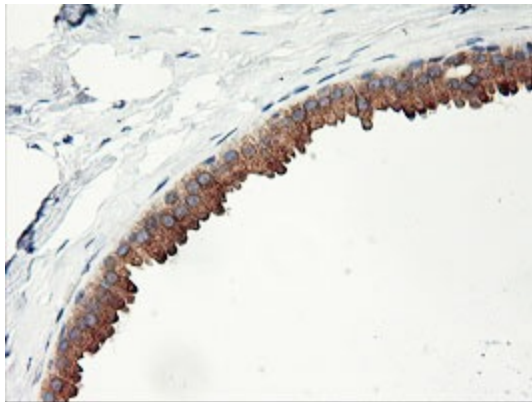


[View online »](#)

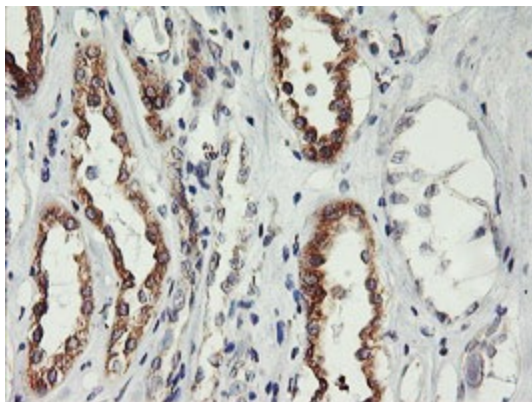
**Product images:**



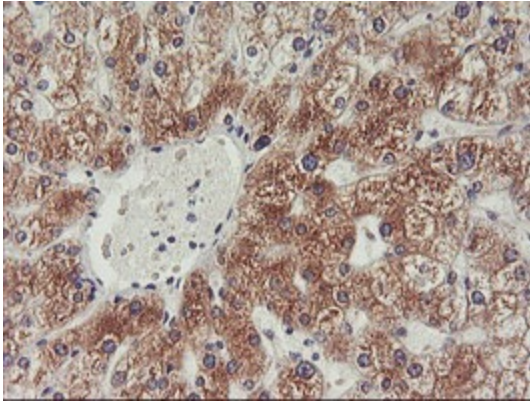
HEK293T cells were transfected with the pCMV6-ENTRY control (Cat# [PS100001], Left lane) or pCMV6-ENTRY PHF21B (Cat# [RC204284], Right lane) cDNA for 48 hrs and lysed. Equivalent amounts of cell lysates (5 ug per lane) were separated by SDS-PAGE and immunoblotted with anti-PHF21B(Cat# [TA503177]). Positive lysates [LY408673] (100ug) and [LC408673] (20ug) can be purchased separately from OriGene.



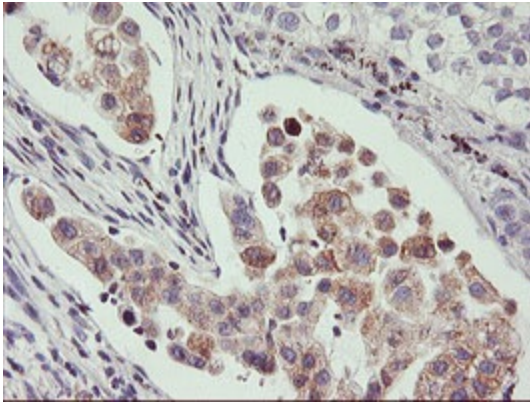
Immunohistochemical staining of paraffin-embedded Human breast tissue within the normal limits using anti-PHF21B mouse monoclonal antibody. (Heat-induced epitope retrieval by 10mM citric buffer, pH6.0, 100°C for 10min, [TA503177])



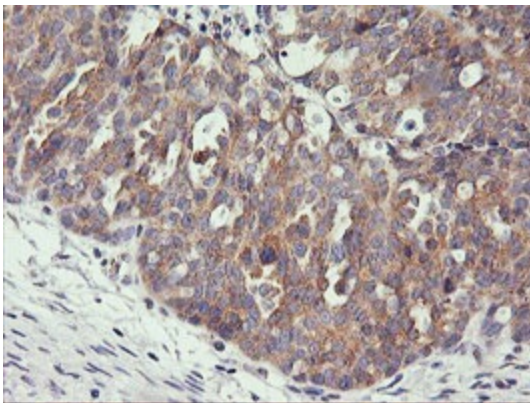
Immunohistochemical staining of paraffin-embedded Human Kidney tissue within the normal limits using anti-PHF21B mouse monoclonal antibody. (Heat-induced epitope retrieval by 10mM citric buffer, pH6.0, 100°C for 10min, [TA503177])



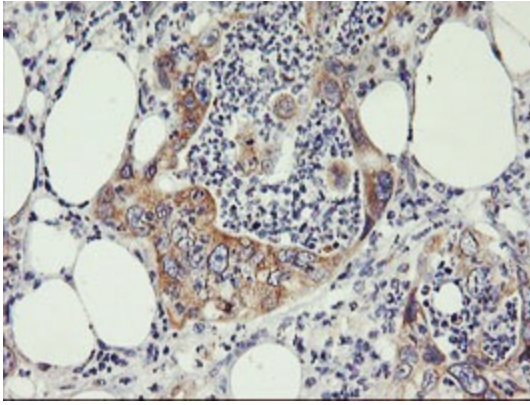
Immunohistochemical staining of paraffin-embedded Human liver tissue within the normal limits using anti-PHF21B mouse monoclonal antibody. (Heat-induced epitope retrieval by 10mM citric buffer, pH6.0, 100°C for 10min, [TA503177])



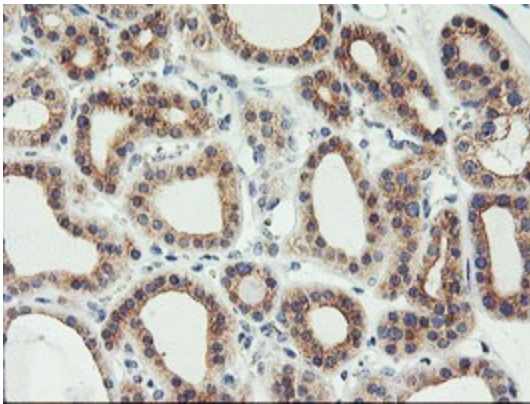
Immunohistochemical staining of paraffin-embedded Carcinoma of Human lung tissue using anti-PHF21B mouse monoclonal antibody. (Heat-induced epitope retrieval by 10mM citric buffer, pH6.0, 100°C for 10min, [TA503177])



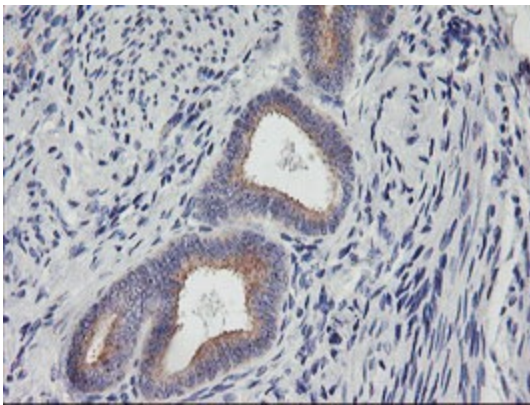
Immunohistochemical staining of paraffin-embedded Adenocarcinoma of Human ovary tissue using anti-PHF21B mouse monoclonal antibody. (Heat-induced epitope retrieval by 10mM citric buffer, pH6.0, 100°C for 10min, [TA503177])



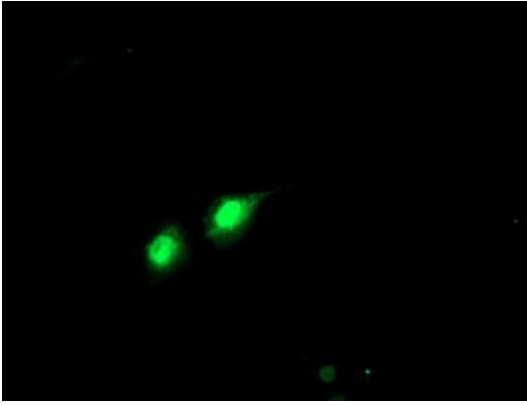
Immunohistochemical staining of paraffin-embedded Carcinoma of Human pancreas tissue using anti-PHF21B mouse monoclonal antibody. (Heat-induced epitope retrieval by 10mM citric buffer, pH6.0, 100°C for 10min, [TA503177])



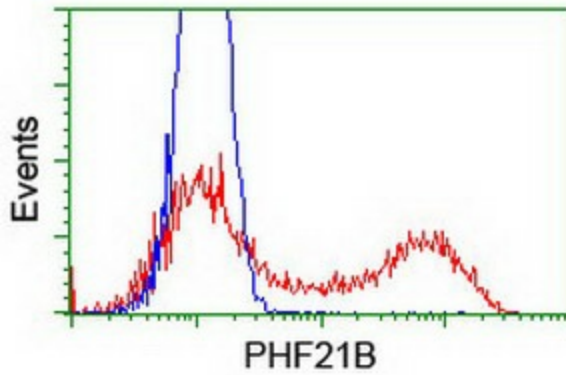
Immunohistochemical staining of paraffin-embedded Carcinoma of Human thyroid tissue using anti-PHF21B mouse monoclonal antibody. (Heat-induced epitope retrieval by 10mM citric buffer, pH6.0, 100°C for 10min, [TA503177])



Immunohistochemical staining of paraffin-embedded Human endometrium tissue within the normal limits using anti-PHF21B mouse monoclonal antibody. (Heat-induced epitope retrieval by 10mM citric buffer, pH6.0, 100°C for 10min, [TA503177])



Anti-PHF21B mouse monoclonal antibody ([TA503177]) immunofluorescent staining of COS7 cells transiently transfected by pCMV6-ENTRY PHF21B ([RC204284]).



HEK293T cells transfected with either [RC204284] overexpress plasmid (Red) or empty vector control plasmid (Blue) were immunostained by anti-PHF21B antibody ([TA503177]), and then analyzed by flow cytometry.