

Product datasheet for **TA503169S**

Tropomodulin 1 (TMOD1) Mouse Monoclonal Antibody [Clone ID: OTI4G9]

Product data:

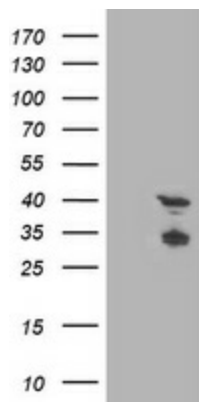
Product Type:	Primary Antibodies
Clone Name:	OTI4G9
Applications:	FC, IF, WB
Recommended Dilution:	WB 1:2000, IF 1:100, FLOW 1:100
Reactivity:	Human, Mouse, Rat
Host:	Mouse
Isotype:	IgG1
Clonality:	Monoclonal
Immunogen:	Full length human recombinant protein of human TMOD1(NP_003266) produced in HEK293T cell.
Formulation:	PBS (pH 7.3) containing 1% BSA, 50% glycerol and 0.02% sodium azide.
Concentration:	1 mg/ml
Purification:	Purified from mouse ascites fluids or tissue culture supernatant by affinity chromatography (protein A/G)
Conjugation:	Unconjugated
Storage:	Store at -20°C as received.
Stability:	Stable for 12 months from date of receipt.
Predicted Protein Size:	40.4 kDa
Gene Name:	tropomodulin 1
Database Link:	NP_003266 Entrez Gene 21916 Mouse Entrez Gene 25566 Rat Entrez Gene 7111 Human P28289
Background:	This gene encodes a member of the tropomodulin family. The encoded protein is an actin-capping protein that regulates tropomyosin by binding to its N-terminus, inhibiting depolymerization and elongation of the pointed end of actin filaments and thereby influencing the structure of the erythrocyte membrane skeleton. Multiple transcript variants encoding the same protein have been found for this gene. [provided by RefSeq]



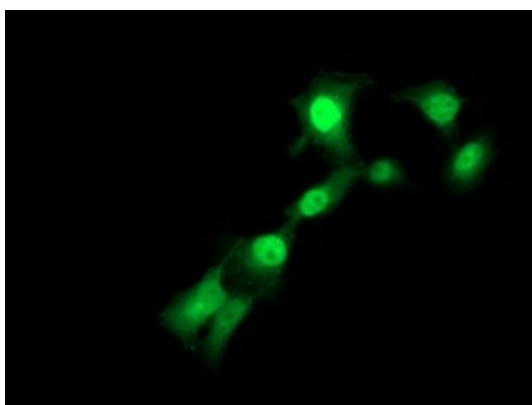
[View online »](#)

Synonyms: D9S57E; ETMOD; TMOD

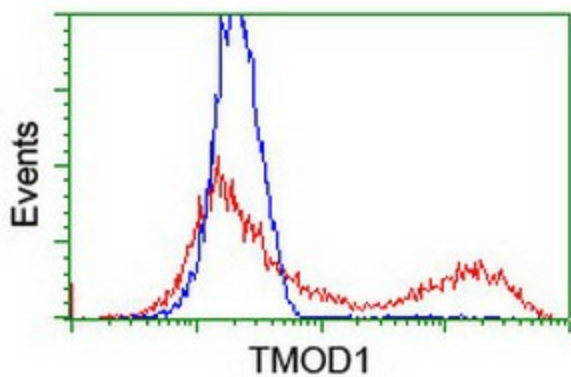
Product images:



HEK293T cells were transfected with the pCMV6-ENTRY control (Left lane) or pCMV6-ENTRY TMOD1 ([RC201134], Right lane) cDNA for 48 hrs and lysed. Equivalent amounts of cell lysates (5 ug per lane) were separated by SDS-PAGE and immunoblotted with anti-TMOD1. Positive lysates [LY418797] (100ug) and [LC418797] (20ug) can be purchased separately from OriGene.



Anti-TMOD1 mouse monoclonal antibody ([TA503169]) immunofluorescent staining of COS7 cells transiently transfected by pCMV6-ENTRY TMOD1 ([RC201134]).



HEK293T cells transfected with either [RC201134] overexpress plasmid (Red) or empty vector control plasmid (Blue) were immunostained by anti-TMOD1 antibody ([TA503169]), and then analyzed by flow cytometry.