

## Product datasheet for **TA503168**

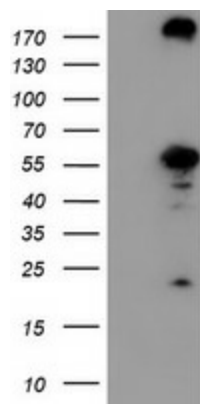
### CNDP2 Mouse Monoclonal Antibody [Clone ID: OT18A2]

#### Product data:

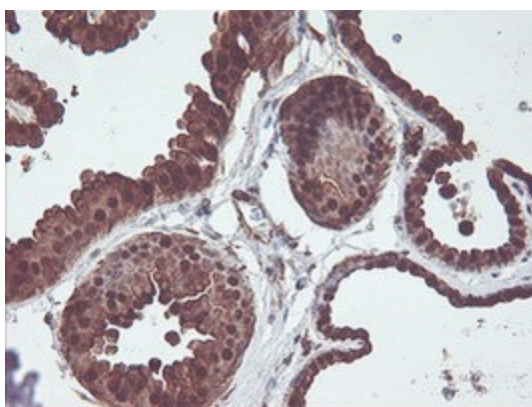
Product Type:	Primary Antibodies
Clone Name:	OT18A2
Applications:	FC, IHC, WB
Recommended Dilution:	WB 1:2000, IHC 1:150, FLOW 1:100
Reactivity:	Human, Mouse, Rat
Host:	Mouse
Isotype:	IgG1
Clonality:	Monoclonal
Immunogen:	Full length human recombinant protein of human CNDP2(NP_060705) produced in HEK293T cell.
Formulation:	PBS (PH 7.3) containing 1% BSA, 50% glycerol and 0.02% sodium azide.
Concentration:	0.5 mg/ml
Purification:	Purified from mouse ascites fluids or tissue culture supernatant by affinity chromatography (protein A/G)
Conjugation:	Unconjugated
Storage:	Store at -20°C as received.
Stability:	Stable for 12 months from date of receipt.
Predicted Protein Size:	52.7 kDa
Gene Name:	carnosine dipeptidase 2
Database Link:	<a href="#">NP_060705</a> <a href="#">Entrez Gene 66054 Mouse</a> <a href="#">Entrez Gene 291394 Rat</a> <a href="#">Entrez Gene 55748 Human</a> <a href="#">Q96KP4</a>
Background:	CNDP2, also known as tissue carnosinase and peptidase A (EC 3.4.13.18), is a nonspecific dipeptidase rather than a selective carnosinase (Teufel et al., 2003 [PubMed 12473676]). [supplied by OMIM]
Synonyms:	CN2; CPGL; HEL-S-13; HsT2298; PEPA
Protein Families:	Protease



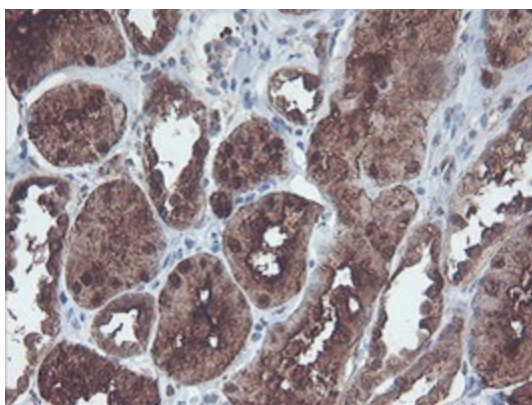
[View online »](#)

**Product images:**

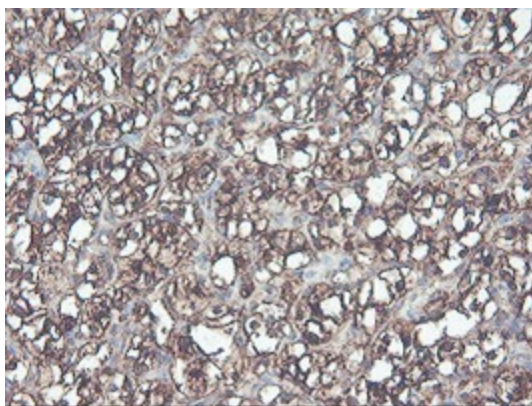
HEK293T cells were transfected with the pCMV6-ENTRY control (Cat# [PS100001], Left lane) or pCMV6-ENTRY CNDP2 (Cat# [RC200120], Right lane) cDNA for 48 hrs and lysed. Equivalent amounts of cell lysates (5 ug per lane) were separated by SDS-PAGE and immunoblotted with anti-CNDP2 (Cat# TA503168). Positive lysates [LY413215] (100ug) and [LC413215] (20ug) can be purchased separately from OriGene.



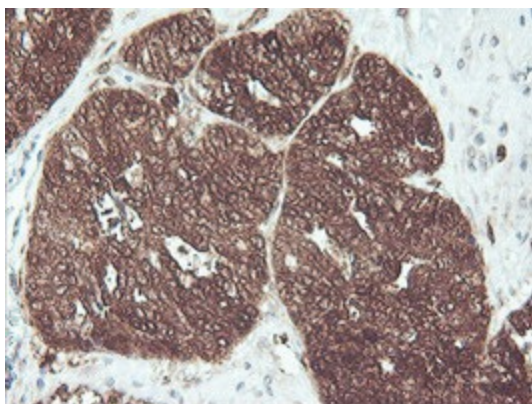
Immunohistochemical staining of paraffin-embedded Human breast tissue within the normal limits using anti-CNDP2 mouse monoclonal antibody. (Heat-induced epitope retrieval by 10mM citric buffer, pH6.0, 100°C for 10min, TA503168)



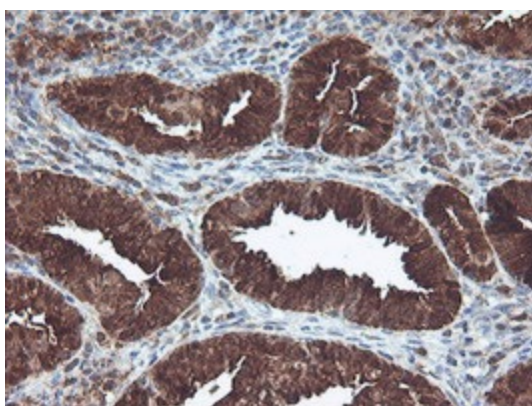
Immunohistochemical staining of paraffin-embedded Human Kidney tissue within the normal limits using anti-CNDP2 mouse monoclonal antibody. (Heat-induced epitope retrieval by 10mM citric buffer, pH6.0, 100°C for 10min, TA503168)



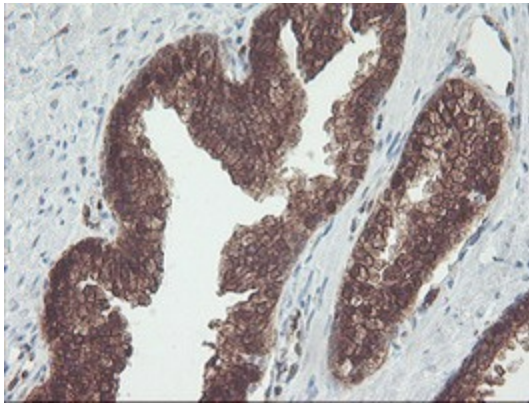
Immunohistochemical staining of paraffin-embedded Carcinoma of Human kidney tissue using anti-CNDP2 mouse monoclonal antibody. (Heat-induced epitope retrieval by 10mM citric buffer, pH6.0, 100°C for 10min, TA503168)



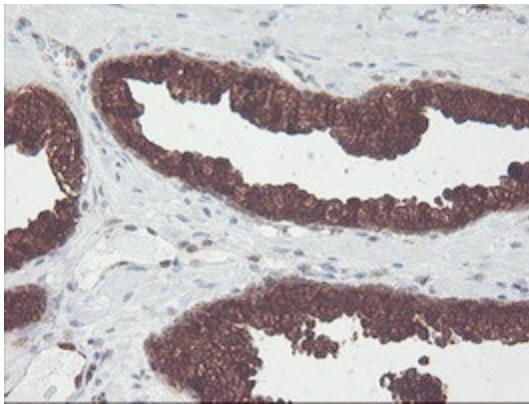
Immunohistochemical staining of paraffin-embedded Adenocarcinoma of Human ovary tissue using anti-CNDP2 mouse monoclonal antibody. (Heat-induced epitope retrieval by 10mM citric buffer, pH6.0, 100°C for 10min, TA503168)



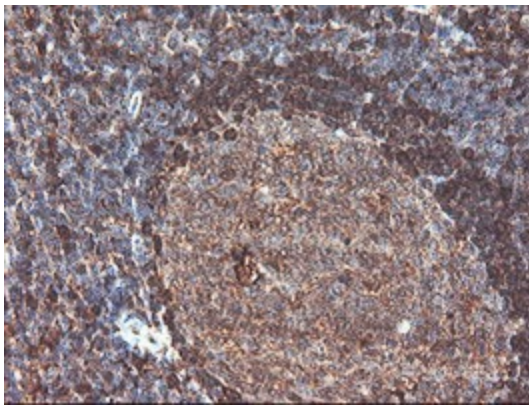
Immunohistochemical staining of paraffin-embedded Adenocarcinoma of Human endometrium tissue using anti-CNDP2 mouse monoclonal antibody. (Heat-induced epitope retrieval by 10mM citric buffer, pH6.0, 100°C for 10min, TA503168)



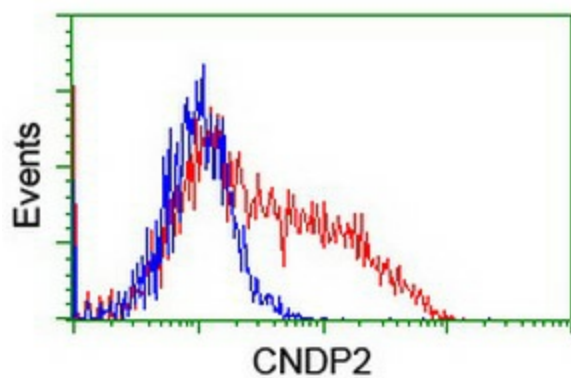
Immunohistochemical staining of paraffin-embedded Human prostate tissue within the normal limits using anti-CNDP2 mouse monoclonal antibody. (Heat-induced epitope retrieval by 10mM citric buffer, pH6.0, 100°C for 10min, TA503168)



Immunohistochemical staining of paraffin-embedded Carcinoma of Human prostate tissue using anti-CNDP2 mouse monoclonal antibody. (Heat-induced epitope retrieval by 10mM citric buffer, pH6.0, 100°C for 10min, TA503168)



Immunohistochemical staining of paraffin-embedded Human tonsil within the normal limits using anti-CNDP2 mouse monoclonal antibody. (Heat-induced epitope retrieval by 10mM citric buffer, pH6.0, 100°C for 10min, TA503168)



HEK293T cells transfected with either [RC200120] overexpress plasmid (Red) or empty vector control plasmid (Blue) were immunostained by anti-CNDP2 antibody (TA503168), and then analyzed by flow cytometry.