

## Product datasheet for **TA503163S**

### **XPF (ERCC4) Mouse Monoclonal Antibody [Clone ID: OTI3H7]**

#### **Product data:**

<b>Product Type:</b>	Primary Antibodies
<b>Clone Name:</b>	OTI3H7
<b>Applications:</b>	FC, WB
<b>Recommended Dilution:</b>	WB 1:1000, FLOW 1:100
<b>Reactivity:</b>	Human, Mouse
<b>Host:</b>	Mouse
<b>Isotype:</b>	IgG1
<b>Clonality:</b>	Monoclonal
<b>Immunogen:</b>	Full length human recombinant protein of human ERCC4(NP_005227) produced in HEK293T cell.
<b>Formulation:</b>	PBS (pH 7.3) containing 1% BSA, 50% glycerol and 0.02% sodium azide.
<b>Concentration:</b>	1 mg/ml
<b>Purification:</b>	Purified from mouse ascites fluids or tissue culture supernatant by affinity chromatography (protein A/G)
<b>Conjugation:</b>	Unconjugated
<b>Storage:</b>	Store at -20°C as received.
<b>Stability:</b>	Stable for 12 months from date of receipt.
<b>Predicted Protein Size:</b>	104.3 kDa
<b>Gene Name:</b>	ERCC excision repair 4, endonuclease catalytic subunit
<b>Database Link:</b>	<a href="#">NP_005227</a> <a href="#">Entrez Gene 50505 Mouse</a> <a href="#">Entrez Gene 2072 Human</a> <a href="#">Q92889</a>
<b>Background:</b>	The protein encoded by this gene forms a complex with ERCC1 and is involved in the 5' incision made during nucleotide excision repair. This complex is a structure specific DNA repair endonuclease that interacts with EME1. Defects in this gene are a cause of xeroderma pigmentosum complementation group F (XP-F), or xeroderma pigmentosum VI (XP6).
<b>Synonyms:</b>	ERCC11; FANCC; RAD1; XFEPS; XPF

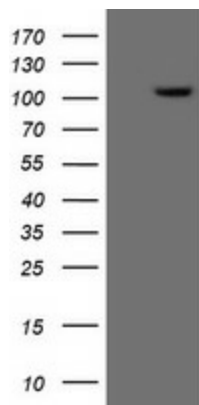


[View online »](#)

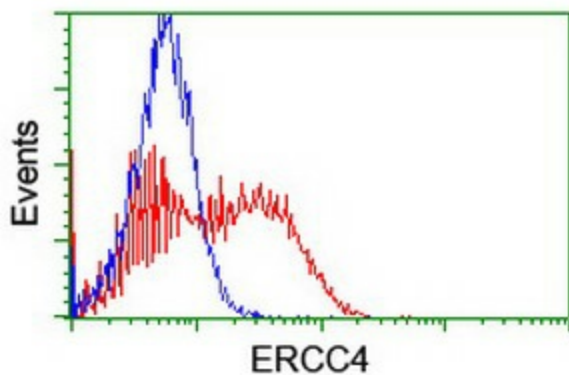
**Protein Families:** Druggable Genome

**Protein Pathways:** Nucleotide excision repair

**Product images:**



HEK293T cells were transfected with the pCMV6-ENTRY control (Left lane) or pCMV6-ENTRY ERCC4 ([RC223300], Right lane) cDNA for 48 hrs and lysed. Equivalent amounts of cell lysates (5 ug per lane) were separated by SDS-PAGE and immunoblotted with anti-ERCC4. Positive lysates [LY401605] (100ug) and [LC401605] (20ug) can be purchased separately from OriGene.



HEK293T cells transfected with either [RC223300] overexpress plasmid (Red) or empty vector control plasmid (Blue) were immunostained by anti-ERCC4 antibody ([TA503163]), and then analyzed by flow cytometry.