

## Product datasheet for **TA503144BM**

### TRAP alpha (SSR1) Mouse Monoclonal Antibody (HRP conjugated) [Clone ID: OTI4H6]

#### Product data:

Product Type:	Primary Antibodies
Clone Name:	OTI4H6
Applications:	FC, IF, IHC, WB
Recommended Dilution:	WB 1:2000, IHC 1:150, IF 1:50~100, FLOW 1:100
Reactivity:	Human, Mouse, Rat
Host:	Mouse
Isotype:	IgG1
Clonality:	Monoclonal
Immunogen:	Full length human recombinant protein of human SSR1 (NP_003135) produced in HEK293T cell.
Formulation:	PBS (pH 7.3) containing 1% BSA, 50% glycerol.
Concentration:	0.5 mg/ml
Purification:	Purified from mouse ascites fluids or tissue culture supernatant by affinity chromatography (protein A/G)
Conjugation:	HRP
Storage:	Store at -20°C as received.
Stability:	Stable for 12 months from date of receipt.
Predicted Protein Size:	32.1 kDa
Gene Name:	signal sequence receptor subunit 1
Database Link:	<a href="#">NP_003135</a> <a href="#">Entrez Gene 107513 Mouse</a> <a href="#">Entrez Gene 6745 Human</a> <a href="#">P43307</a>
Background:	The signal sequence receptor (SSR) is a glycosylated endoplasmic reticulum (ER) membrane receptor associated with protein translocation across the ER membrane. The SSR consists of 2 subunits, a 34-kD glycoprotein encoded by this gene and a 22-kD glycoprotein. This gene generates several mRNA species as a result of complex alternative polyadenylation. This gene is unusual in that it utilizes arrays of polyA signal sequences that are mostly non-canonical. [provided by RefSeq]. COMPLETENESS: complete on the 3' end.

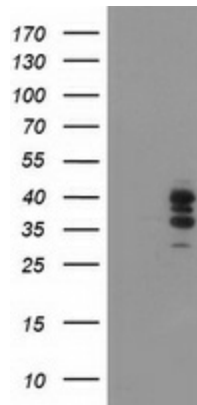


[View online »](#)

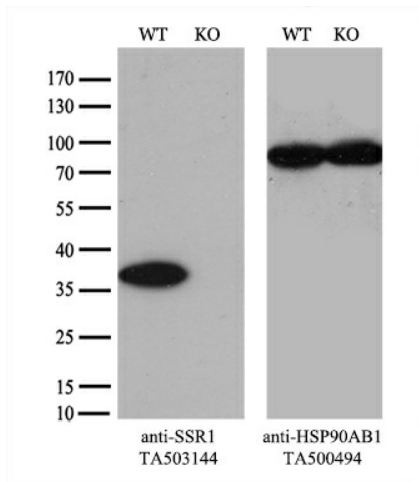
**Synonyms:** TRAPA

**Protein Families:** Druggable Genome, Transmembrane

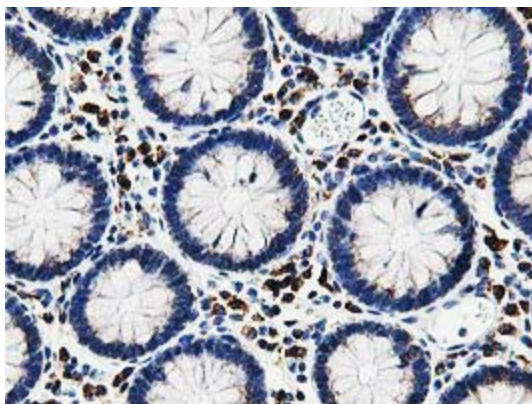
**Product images:**



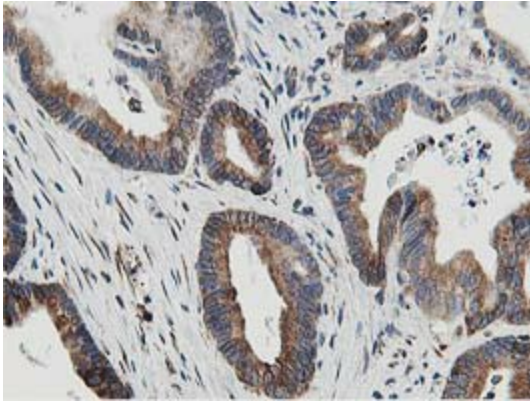
HEK293T cells were transfected with the pCMV6-ENTRY control (Left lane) or pCMV6-ENTRY SSR1 ([RC202408], Right lane) cDNA for 48 hrs and lysed. Equivalent amounts of cell lysates (5 ug per lane) were separated by SDS-PAGE and immunoblotted with anti-SSR1. Positive lysates [LY401093] (100ug) and [LC401093] (20ug) can be purchased separately from OriGene.



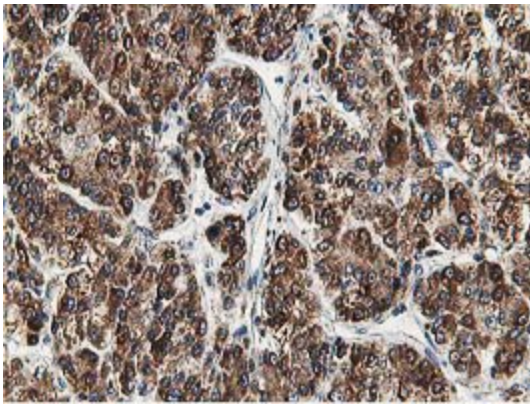
Equivalent amounts of cell lysates (10 ug per lane) of wild-type HeLa cells (WT, Cat# LC810HELA) and SSR1-Knockout HeLa cells (KO, Cat# [LC812609]) were separated by SDS-PAGE and immunoblotted with anti-SSR1 monoclonal antibody [TA503144] (1:2000). Then the blotted membrane was stripped and reprobed with anti-HSP90 antibody as a loading control.



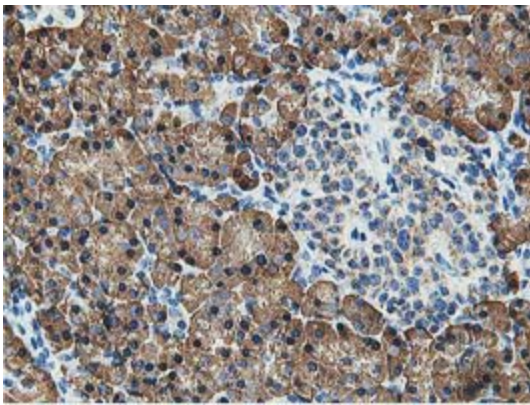
Immunohistochemical staining of paraffin-embedded Human colon tissue within the normal limits using anti-SSR1 mouse monoclonal antibody. (Heat-induced epitope retrieval by 10mM citric buffer, pH6.0, 100°C for 10min, [TA503144])



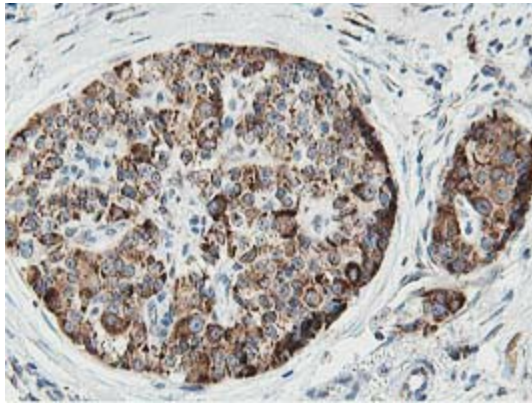
Immunohistochemical staining of paraffin-embedded Adenocarcinoma of Human colon tissue using anti-SSR1 mouse monoclonal antibody. (Heat-induced epitope retrieval by 10mM citric buffer, pH6.0, 100°C for 10min, [TA503144])



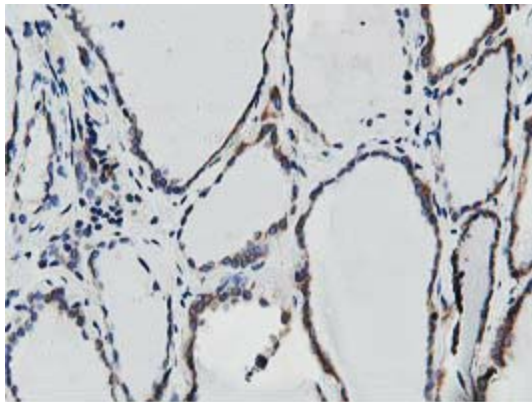
Immunohistochemical staining of paraffin-embedded Carcinoma of Human liver tissue using anti-SSR1 mouse monoclonal antibody. (Heat-induced epitope retrieval by 10mM citric buffer, pH6.0, 100°C for 10min, [TA503144])



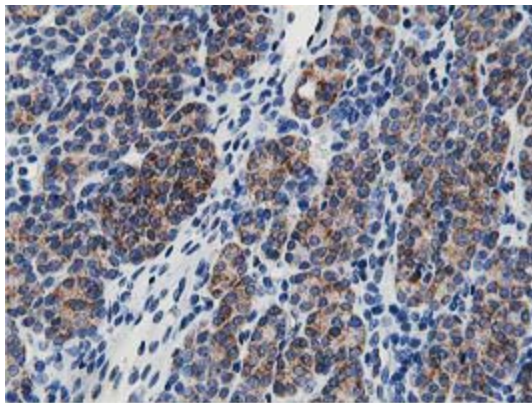
Immunohistochemical staining of paraffin-embedded Human pancreas tissue within the normal limits using anti-SSR1 mouse monoclonal antibody. (Heat-induced epitope retrieval by 10mM citric buffer, pH6.0, 100°C for 10min, [TA503144])



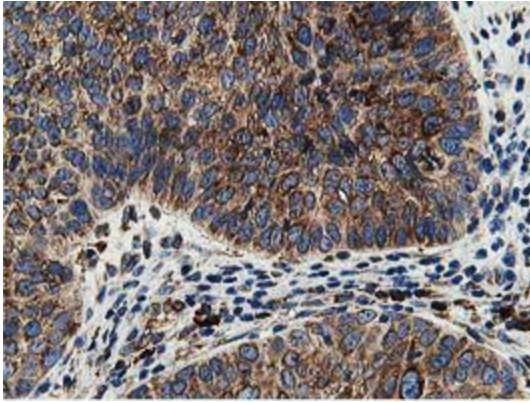
Immunohistochemical staining of paraffin-embedded Carcinoma of Human pancreas tissue using anti-SSR1 mouse monoclonal antibody. (Heat-induced epitope retrieval by 10mM citric buffer, pH6.0, 100°C for 10min, [TA503144])



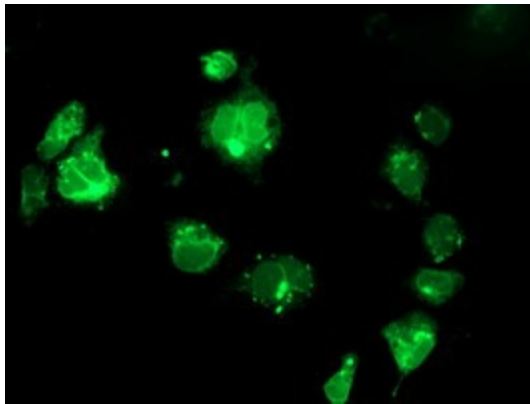
Immunohistochemical staining of paraffin-embedded Human thyroid tissue within the normal limits using anti-SSR1 mouse monoclonal antibody. (Heat-induced epitope retrieval by 10mM citric buffer, pH6.0, 100°C for 10min, [TA503144])



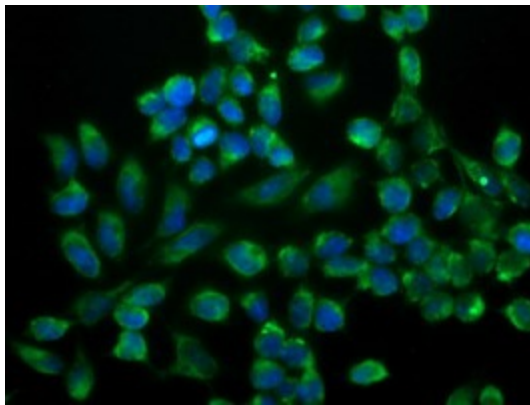
Immunohistochemical staining of paraffin-embedded Carcinoma of Human thyroid tissue using anti-SSR1 mouse monoclonal antibody. (Heat-induced epitope retrieval by 10mM citric buffer, pH6.0, 100°C for 10min, [TA503144])



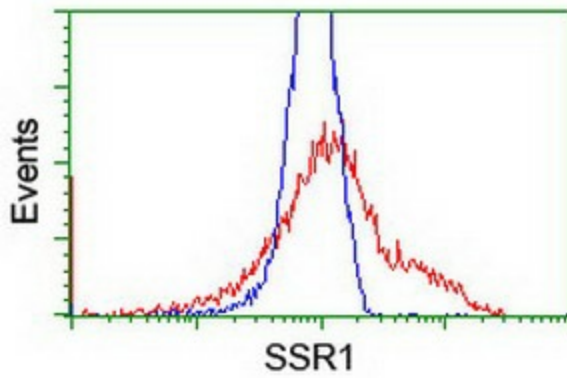
Immunohistochemical staining of paraffin-embedded Carcinoma of Human bladder tissue using anti-SSR1 mouse monoclonal antibody. (Heat-induced epitope retrieval by 10mM citric buffer, pH6.0, 100°C for 10min, [TA503144])



Anti-SSR1 mouse monoclonal antibody ([TA503144]) immunofluorescent staining of COS7 cells transiently transfected by pCMV6-ENTRY SSR1 ([RC202408]).



Immunofluorescent staining of HeLa cells using anti-SSR1 mouse monoclonal antibody ([TA503144]).



HEK293T cells transfected with either [RC202408] overexpress plasmid (Red) or empty vector control plasmid (Blue) were immunostained by anti-SSR1 antibody ([TA503144]), and then analyzed by flow cytometry.