

Product datasheet for **TA503141AM**

ILVBL Mouse Monoclonal Antibody (Biotin conjugated) [Clone ID: OTI3E9]

Product data:

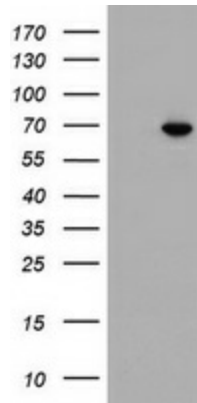
Product Type:	Primary Antibodies
Clone Name:	OTI3E9
Applications:	IHC, WB
Recommended Dilution:	WB 1:2000, IHC 1:500
Reactivity:	Human, Monkey, Mouse, Rat
Host:	Mouse
Isotype:	IgG2a
Clonality:	Monoclonal
Immunogen:	Full length human recombinant protein of human ILVBL (NP_006835) produced in HEK293T cell.
Formulation:	PBS (pH 7.3) containing 1% BSA, 50% glycerol and 0.02% sodium azide.
Concentration:	0.5 mg/ml
Purification:	Purified from mouse ascites fluids or tissue culture supernatant by affinity chromatography (protein A/G)
Conjugation:	Biotin
Storage:	Store at -20°C as received.
Stability:	Stable for 12 months from date of receipt.
Predicted Protein Size:	67.7 kDa
Gene Name:	ilvB acetolactate synthase like
Database Link:	NP_006835 Entrez Gene 362843 Rat Entrez Gene 718086 Monkey Entrez Gene 10994 Human A1L0T0
Background:	The protein encoded by this gene shares similarity with several thiamine pyrophosphate-binding proteins identified in bacteria, yeast, and plants. The highest degree of similarity is found with bacterial acetolactate synthases (AHAS), which are enzymes that catalyze the first step in branched-chain amino acid biosynthesis. [provided by RefSeq, Jul 2008]
Synonyms:	209L8; AHAS; ILV2H



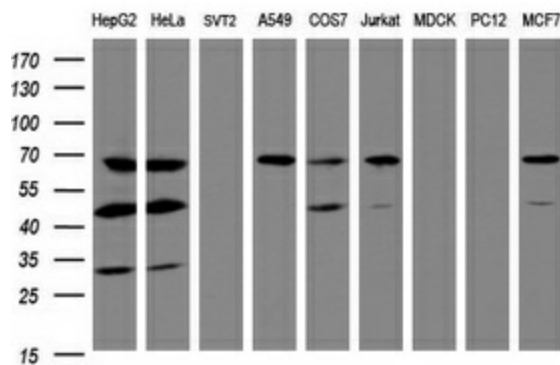
[View online »](#)

Protein Families: Transmembrane

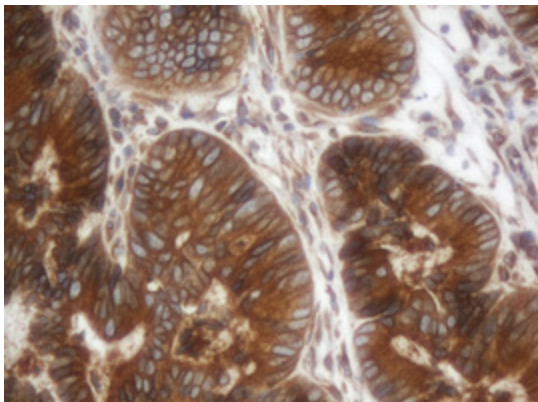
Product images:



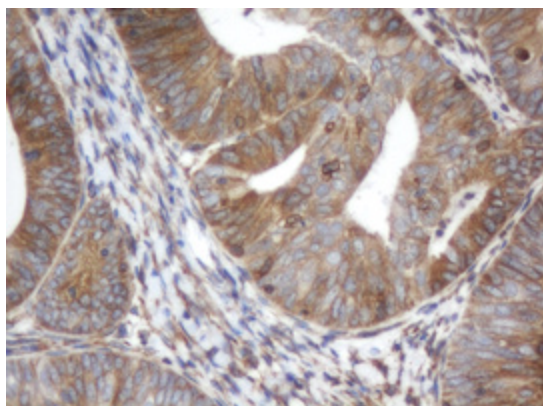
HEK293T cells were transfected with the pCMV6-ENTRY control (Left lane) or pCMV6-ENTRY ILVBL ([RC203987], Right lane) cDNA for 48 hrs and lysed. Equivalent amounts of cell lysates (5 ug per lane) were separated by SDS-PAGE and immunoblotted with anti-ILVBL. Positive lysates [LY416389] (100ug) and [LC416389] (20ug) can be purchased separately from OriGene.



Western blot analysis of extracts (35ug) from 9 different cell lines by using anti-ILVBL monoclonal antibody (HepG2: human; HeLa: human; SVT2: mouse; A549: human; COS7: monkey; Jurkat: human; MDCK: canine; PC12: rat; MCF7: human).



Immunohistochemical staining of paraffin-embedded Adenocarcinoma of Human colon tissue using anti-ILVBL mouse monoclonal antibody. (Heat-induced epitope retrieval by 10mM citric buffer, pH6.0, 120°C for 3min, [TA503141])



Immunohistochemical staining of paraffin-embedded Adenocarcinoma of Human endometrium tissue using anti-ILVBL mouse monoclonal antibody. (Heat-induced epitope retrieval by 10mM citric buffer, pH6.0, 120°C for 3min, [TA503141])