

Product datasheet for **TA503139**

LMCD1 Mouse Monoclonal Antibody [Clone ID: OT11H5]

Product data:

| | |
|-------------------------|---|
| Product Type: | Primary Antibodies |
| Clone Name: | OT11H5 |
| Applications: | FC, IF, IHC, WB |
| Recommended Dilution: | WB 1:2000, IHC 1:150, IF 1:100, FLOW 1:100 |
| Reactivity: | Human, Mouse, Rat |
| Host: | Mouse |
| Isotype: | IgG1 |
| Clonality: | Monoclonal |
| Immunogen: | Full length human recombinant protein of human LMCD1(NP_055398) produced in HEK293T cell. |
| Formulation: | PBS (pH 7.3) containing 1% BSA, 50% glycerol and 0.02% sodium azide. |
| Concentration: | 0.8 mg/ml |
| Purification: | Purified from mouse ascites fluids or tissue culture supernatant by affinity chromatography (protein A/G) |
| Conjugation: | Unconjugated |
| Storage: | Store at -20°C as received. |
| Stability: | Stable for 12 months from date of receipt. |
| Predicted Protein Size: | 40.7 kDa |
| Gene Name: | LIM and cysteine rich domains 1 |
| Database Link: | NP_055398 Entrez Gene 29995 Human Q9NZU5 |



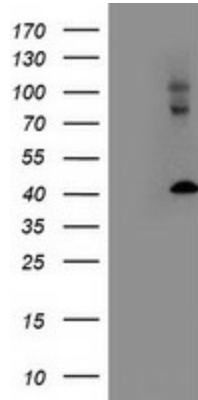
[View online »](#)

Background:

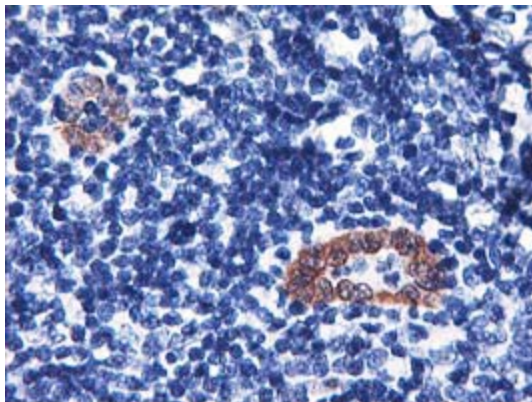
The protein encoded by this gene contains a cysteine-rich domain in the N-terminal region and 2 LIM domains in the C-terminal region. It also has several potential phosphorylation and N-myristoylation sites and a single potential N-glycosylation site. The presence of LIM domains implies involvement in protein-protein interactions. Expression of this gene has been detected in most tissues, with highest expression in skeletal muscle. Transcript variants utilizing alternative polyA signals have been observed. [provided by RefSeq, Jul 2008].
COMPLETENESS: complete on the 3' end.

Synonyms:

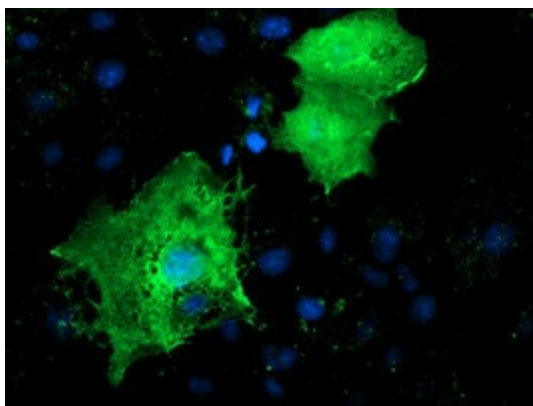
dyxin; LIM and cysteine-rich domains 1

Product images:

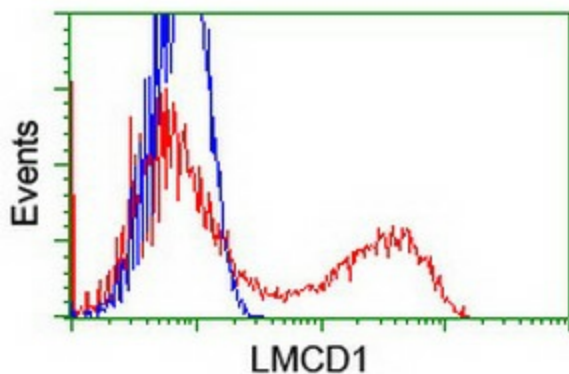
HEK293T cells were transfected with the pCMV6-ENTRY control (Cat# [PS100001], Left lane) or pCMV6-ENTRY LMCD1 (Cat# [RC200062], Right lane) cDNA for 48 hrs and lysed. Equivalent amounts of cell lysates (5 ug per lane) were separated by SDS-PAGE and immunoblotted with anti-LMCD1 (Cat# TA503139). Positive lysates [LY402349] (100ug) and [LC402349] (20ug) can be purchased separately from OriGene.



Immunohistochemical staining of paraffin-embedded Human lymphoma tissue using anti-LMCD1 mouse monoclonal antibody. (Heat-induced epitope retrieval by 10mM citric buffer, pH6.0, 100°C for 10min, TA503139)



Anti-LMCD1 mouse monoclonal antibody (TA503139) immunofluorescent staining of COS7 cells transiently transfected by pCMV6-ENTRY LMCD1 ([RC200062]).



HEK293T cells transfected with either [RC200062] overexpress plasmid (Red) or empty vector control plasmid (Blue) were immunostained by anti-LMCD1 antibody (TA503139), and then analyzed by flow cytometry.