

Product datasheet for **TA503138S**

LCMT1 Mouse Monoclonal Antibody [Clone ID: OTI4A5]

Product data:

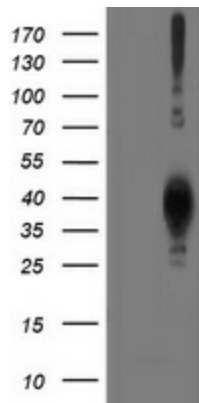
Product Type:	Primary Antibodies
Clone Name:	OTI4A5
Applications:	FC, IF, IHC, WB
Recommended Dilution:	WB 1:2000, IHC 1:150, IF 1:100, FLOW 1:100
Reactivity:	Human, Mouse, Rat
Host:	Mouse
Isotype:	IgG2b
Clonality:	Monoclonal
Immunogen:	Full length human recombinant protein of human LCMT1(NP_057393) produced in HEK293 cell.
Formulation:	PBS (pH 7.3) containing 1% BSA, 50% glycerol and 0.02% sodium azide.
Concentration:	0.53 mg/ml
Purification:	Purified from mouse ascites fluids or tissue culture supernatant by affinity chromatography (protein A/G)
Conjugation:	Unconjugated
Storage:	Store at -20°C as received.
Stability:	Stable for 12 months from date of receipt.
Predicted Protein Size:	38.2 kDa
Gene Name:	leucine carboxyl methyltransferase 1
Database Link:	NP_057393 Entrez Gene 30949 Mouse Entrez Gene 361643 Rat Entrez Gene 51451 Human Q9UIC8
Background:	LCMT1 catalyzes the methylation of the carboxyl group of the C-terminal leucine residue (leu309) of the catalytic subunit of protein phosphatase-2A (PPP2CA; MIM 176915) (De Baere et al., 1999 [PubMed 10600115]). [supplied by OMIM]
Synonyms:	CGI-68; LCMT; PPMT1



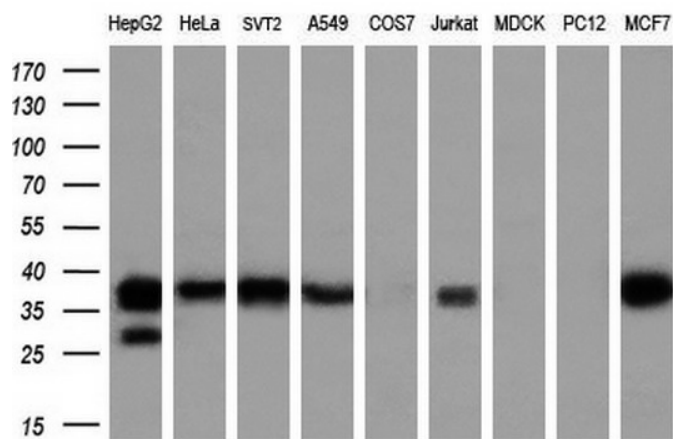
[View online »](#)

Protein Pathways: Androgen and estrogen metabolism, Histidine metabolism, Selenoamino acid metabolism, Tyrosine metabolism

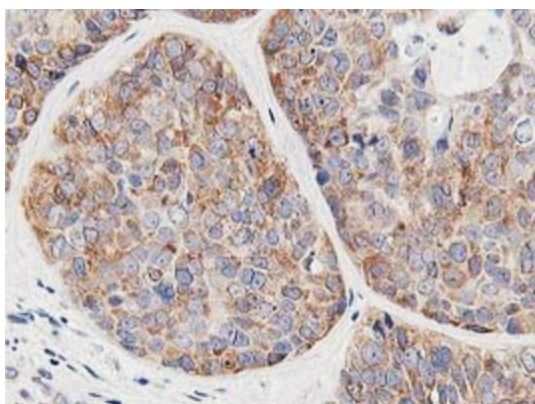
Product images:



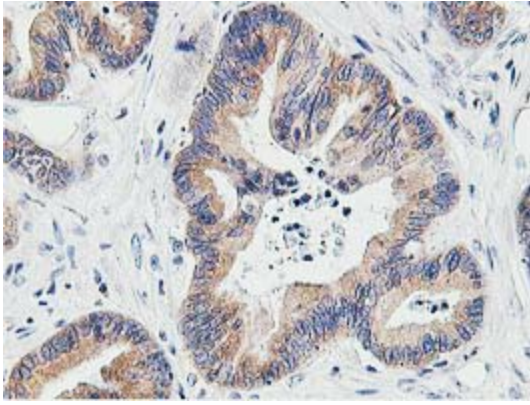
HEK293T cells were transfected with the pCMV6-ENTRY control (Left lane) or pCMV6-ENTRY LCMT1 ([RC200018], Right lane) cDNA for 48 hrs and lysed. Equivalent amounts of cell lysates (5 ug per lane) were separated by SDS-PAGE and immunoblotted with anti-LCMT1. Positive lysates [LY414046] (100ug) and [LC414046] (20ug) can be purchased separately from OriGene.



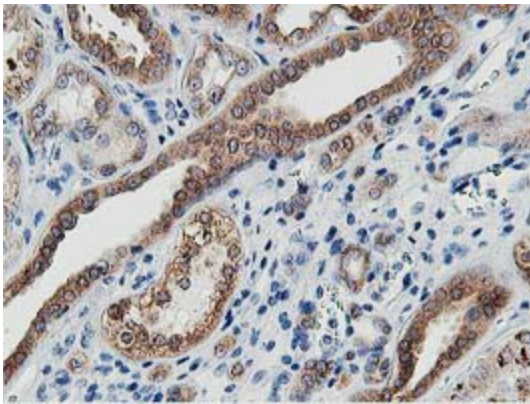
Western blot analysis of extracts (35ug) from 9 different cell lines by using anti-LCMT1 monoclonal antibody (HepG2: human; HeLa: human; SVT2: mouse; A549: human; COS7: monkey; Jurkat: human; MDCK: canine; PC12: rat; MCF7: human) (1:200).



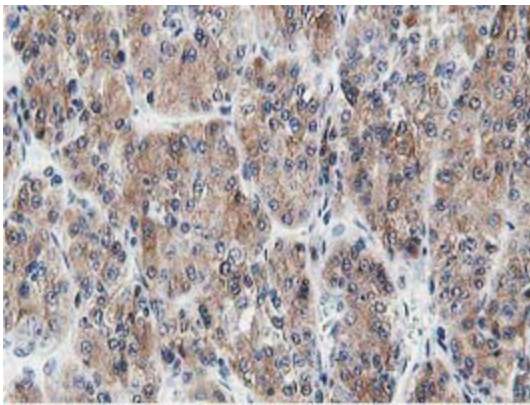
Immunohistochemical staining of paraffin-embedded Adenocarcinoma of Human breast tissue using anti-LCMT1 mouse monoclonal antibody. (Heat-induced epitope retrieval by 10mM citric buffer, pH6.0, 100°C for 10min, [TA503138])



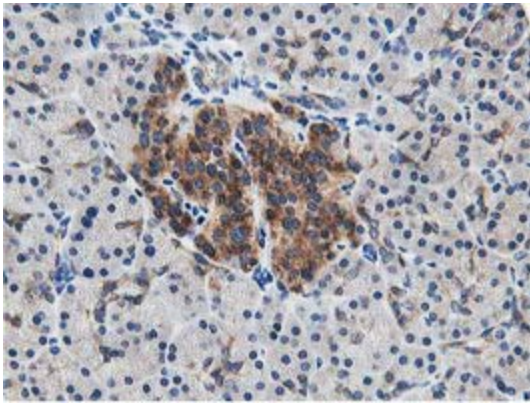
Immunohistochemical staining of paraffin-embedded Adenocarcinoma of Human colon tissue using anti-LCMT1 mouse monoclonal antibody. (Heat-induced epitope retrieval by 10mM citric buffer, pH6.0, 100°C for 10min, [TA503138])



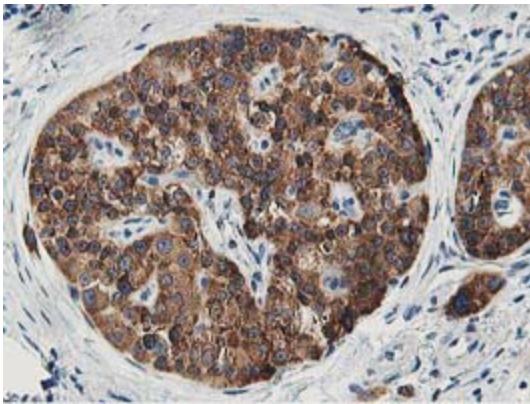
Immunohistochemical staining of paraffin-embedded Human Kidney tissue within the normal limits using anti-LCMT1 mouse monoclonal antibody. (Heat-induced epitope retrieval by 10mM citric buffer, pH6.0, 100°C for 10min, [TA503138])



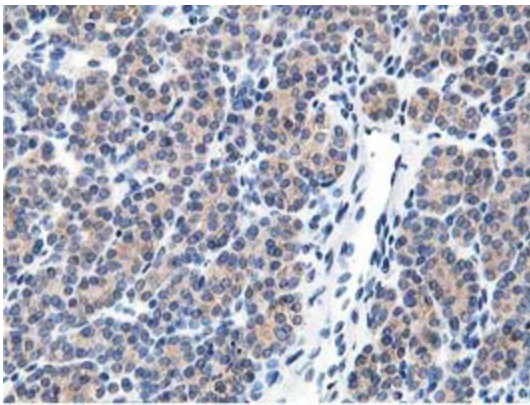
Immunohistochemical staining of paraffin-embedded Carcinoma of Human liver tissue using anti-LCMT1 mouse monoclonal antibody. (Heat-induced epitope retrieval by 10mM citric buffer, pH6.0, 100°C for 10min, [TA503138])



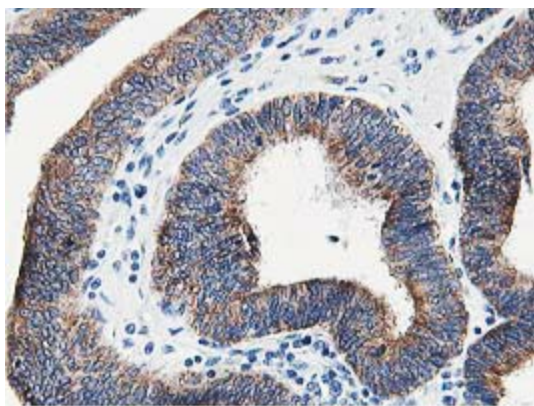
Immunohistochemical staining of paraffin-embedded Human pancreas tissue within the normal limits using anti-LCMT1 mouse monoclonal antibody. (Heat-induced epitope retrieval by 10mM citric buffer, pH6.0, 100°C for 10min, [TA503138])



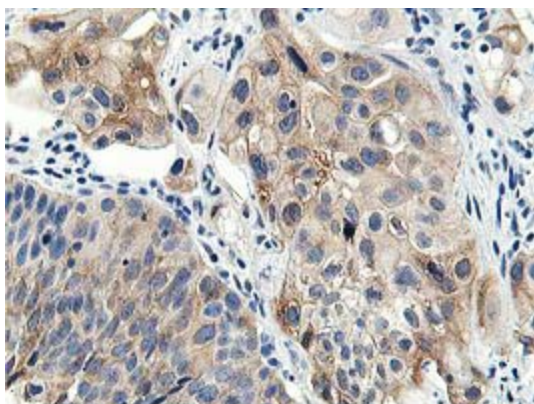
Immunohistochemical staining of paraffin-embedded Carcinoma of Human pancreas tissue using anti-LCMT1 mouse monoclonal antibody. (Heat-induced epitope retrieval by 10mM citric buffer, pH6.0, 100°C for 10min, [TA503138])



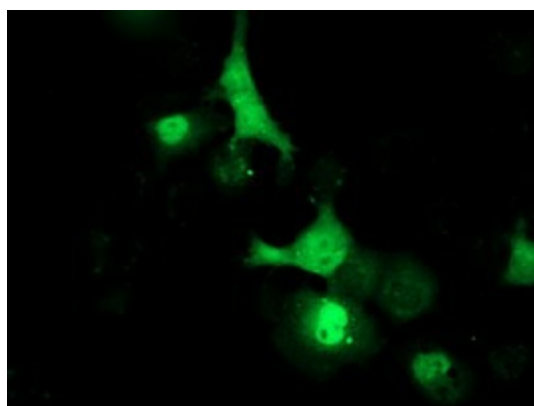
Immunohistochemical staining of paraffin-embedded Carcinoma of Human thyroid tissue using anti-LCMT1 mouse monoclonal antibody. (Heat-induced epitope retrieval by 10mM citric buffer, pH6.0, 100°C for 10min, [TA503138])



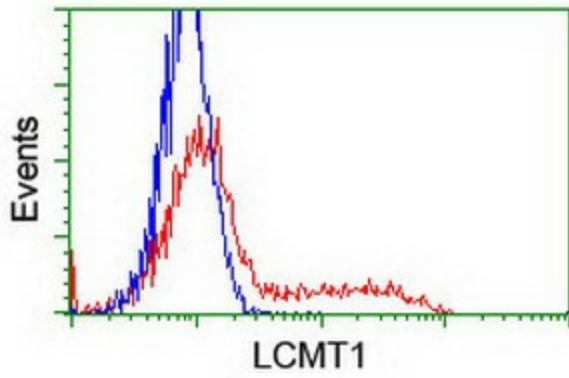
Immunohistochemical staining of paraffin-embedded Adenocarcinoma of Human endometrium tissue using anti-LCMT1 mouse monoclonal antibody. (Heat-induced epitope retrieval by 10mM citric buffer, pH6.0, 100°C for 10min, [TA503138])



Immunohistochemical staining of paraffin-embedded Carcinoma of Human bladder tissue using anti-LCMT1 mouse monoclonal antibody. (Heat-induced epitope retrieval by 10mM citric buffer, pH6.0, 100°C for 10min, [TA503138])



Anti-LCMT1 mouse monoclonal antibody ([TA503138]) immunofluorescent staining of COS7 cells transiently transfected by pCMV6-ENTRY LCMT1 ([RC200018]).



HEK293T cells transfected with either [RC200018] overexpress plasmid (Red) or empty vector control plasmid (Blue) were immunostained by anti-LCMT1 antibody ([TA503138]), and then analyzed by flow cytometry.