

Product datasheet for **TA503131S**

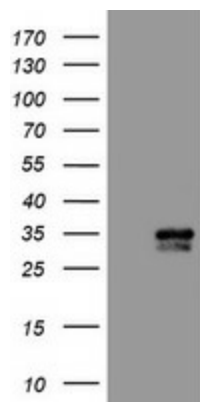
CXorf26 (PBDC1) Mouse Monoclonal Antibody [Clone ID: OTI5A11]

Product data:

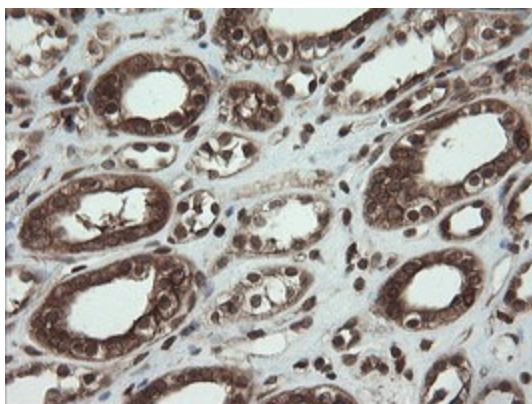
Product Type:	Primary Antibodies
Clone Name:	OTI5A11
Applications:	IHC, WB
Recommended Dilution:	WB 1:2000, IHC 1:50~150
Reactivity:	Human, Mouse, Rat
Host:	Mouse
Isotype:	IgG1
Clonality:	Monoclonal
Immunogen:	Full length human recombinant protein of human CXorf26(NP_057584) produced in HEK293T cell.
Formulation:	PBS (pH 7.3) containing 1% BSA, 50% glycerol and 0.02% sodium azide.
Concentration:	1 mg/ml
Purification:	Purified from mouse ascites fluids or tissue culture supernatant by affinity chromatography (protein A/G)
Conjugation:	Unconjugated
Storage:	Store at -20°C as received.
Stability:	Stable for 12 months from date of receipt.
Predicted Protein Size:	25.9 kDa
Gene Name:	polysaccharide biosynthesis domain containing 1
Database Link:	NP_057584 Entrez Gene 51260 Human Q9BVG4
Synonyms:	CXorf26



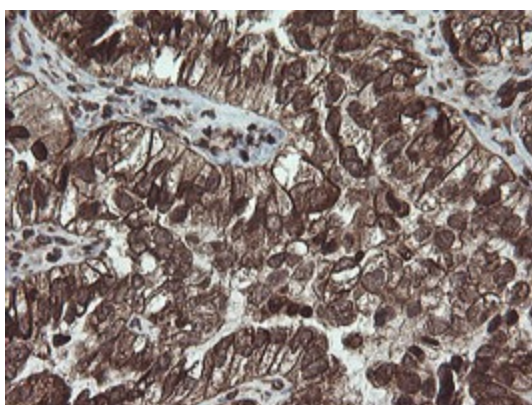
[View online »](#)

Product images:

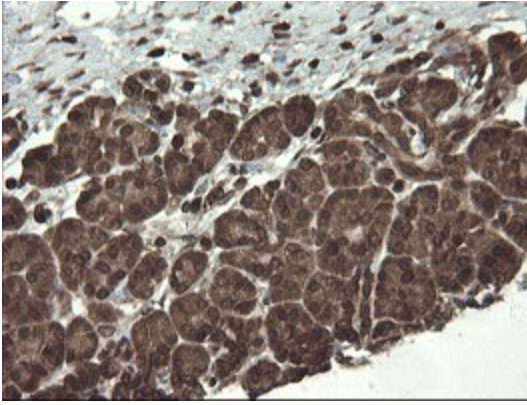
HEK293T cells were transfected with the pCMV6-ENTRY control (Cat# [PS100001], Left lane) or pCMV6-ENTRY CXorf26 (Cat# [RC200095], Right lane) cDNA for 48 hrs and lysed. Equivalent amounts of cell lysates (5 ug per lane) were separated by SDS-PAGE and immunoblotted with anti-CXorf26 (Cat# [TA503131]). Positive lysates [LY413940] (100ug) and [LC413940] (20ug) can be purchased separately from OriGene.



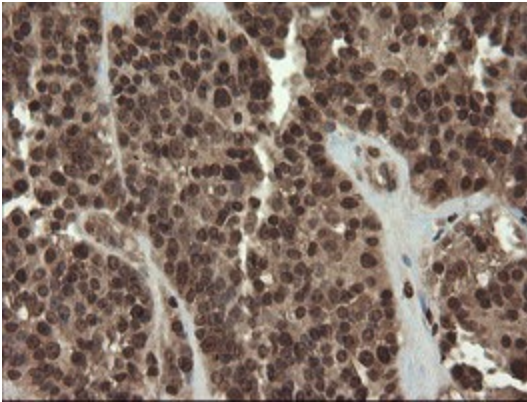
Immunohistochemical staining of paraffin-embedded Human Kidney tissue within the normal limits using anti-CXorf26 mouse monoclonal antibody. (Heat-induced epitope retrieval by 10mM citric buffer, pH6.0, 100°C for 10min, [TA503131])



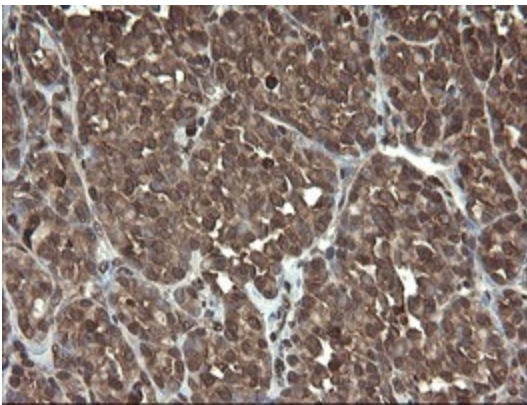
Immunohistochemical staining of paraffin-embedded Adenocarcinoma of Human ovary tissue using anti-CXorf26 mouse monoclonal antibody. (Heat-induced epitope retrieval by 10mM citric buffer, pH6.0, 100°C for 10min, [TA503131])



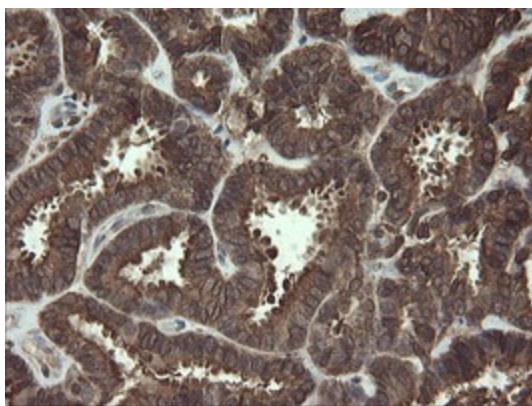
Immunohistochemical staining of paraffin-embedded Human pancreas tissue within the normal limits using anti-CXorf26 mouse monoclonal antibody. (Heat-induced epitope retrieval by 10mM citric buffer, pH6.0, 100°C for 10min, [TA503131])



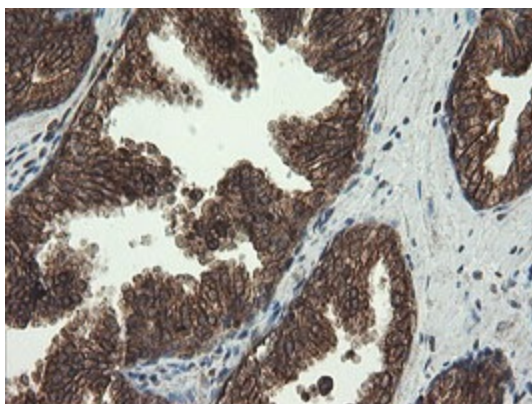
Immunohistochemical staining of paraffin-embedded Carcinoma of Human pancreas tissue using anti-CXorf26 mouse monoclonal antibody. (Heat-induced epitope retrieval by 10mM citric buffer, pH6.0, 100°C for 10min, [TA503131])



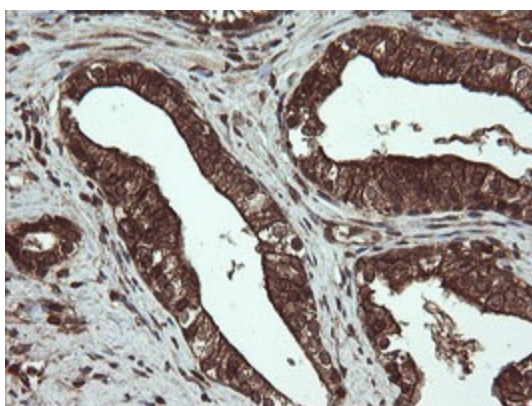
Immunohistochemical staining of paraffin-embedded Carcinoma of Human thyroid tissue using anti-CXorf26 mouse monoclonal antibody. (Heat-induced epitope retrieval by 10mM citric buffer, pH6.0, 100°C for 10min, [TA503131])



Immunohistochemical staining of paraffin-embedded Adenocarcinoma of Human endometrium tissue using anti-CXorf26 mouse monoclonal antibody. (Heat-induced epitope retrieval by 10mM citric buffer, pH6.0, 100°C for 10min, [TA503131])



Immunohistochemical staining of paraffin-embedded Human prostate tissue within the normal limits using anti-CXorf26 mouse monoclonal antibody. (Heat-induced epitope retrieval by 10mM citric buffer, pH6.0, 100°C for 10min, [TA503131])



Immunohistochemical staining of paraffin-embedded Carcinoma of Human prostate tissue using anti-CXorf26 mouse monoclonal antibody. (Heat-induced epitope retrieval by 10mM citric buffer, pH6.0, 100°C for 10min, [TA503131])