

Product datasheet for **TA503122**

LIM Kinase 1 (LIMK1) Mouse Monoclonal Antibody [Clone ID: OTI2A11]

Product data:

Product Type:	Primary Antibodies
Clone Name:	OTI2A11
Applications:	FC, IF, IHC, WB
Recommended Dilution:	WB 1:2000, IHC 1:150, IF 1:100, FLOW 1:100
Reactivity:	Human, Mouse, Rat
Host:	Mouse
Isotype:	IgG2b
Clonality:	Monoclonal
Immunogen:	Full length human recombinant protein of human LIMK1 (NP_002305) produced in HEK293T cell.
Formulation:	PBS (pH 7.3) containing 1% BSA, 50% glycerol and 0.02% sodium azide.
Concentration:	1 mg/ml
Purification:	Purified from mouse ascites fluids or tissue culture supernatant by affinity chromatography (protein A/G)
Conjugation:	Unconjugated
Storage:	Store at -20°C as received.
Stability:	Stable for 12 months from date of receipt.
Predicted Protein Size:	72.4 kDa
Gene Name:	LIM domain kinase 1
Database Link:	NP_002305 Entrez Gene 16885 Mouse Entrez Gene 65172 Rat Entrez Gene 3984 Human P53667



[View online »](#)

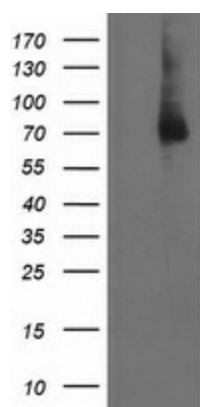
Background: There are approximately 40 known eukaryotic LIM proteins, so named for the LIM domains they contain. LIM domains are highly conserved cysteine-rich structures containing 2 zinc fingers. Although zinc fingers usually function by binding to DNA or RNA, the LIM motif probably mediates protein-protein interactions. LIM kinase-1 and LIM kinase-2 belong to a small subfamily with a unique combination of 2 N-terminal LIM motifs and a C-terminal protein kinase domain. LIMK1 is likely to be a component of an intracellular signaling pathway and may be involved in brain development. LIMK1 hemizyosity is implicated in the impaired visuospatial constructive cognition of Williams syndrome. [provided by RefSeq]

Synonyms: LIMK; LIMK-1

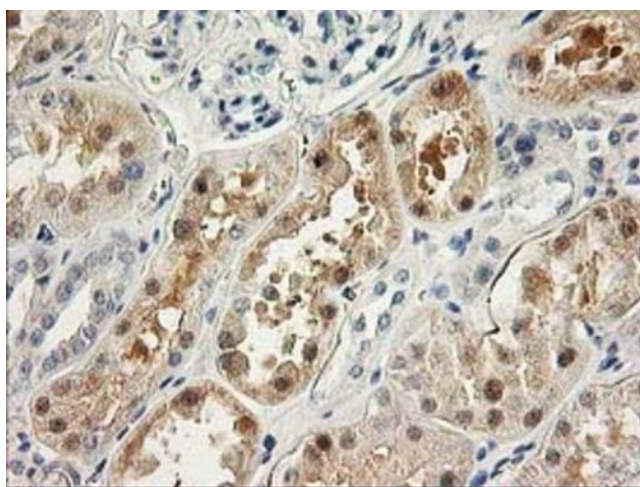
Protein Families: Druggable Genome, Protein Kinase

Protein Pathways: Axon guidance, Fc gamma R-mediated phagocytosis, Regulation of actin cytoskeleton

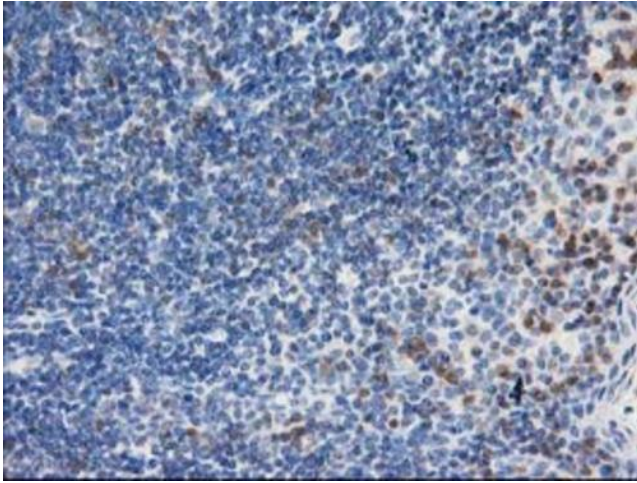
Product images:



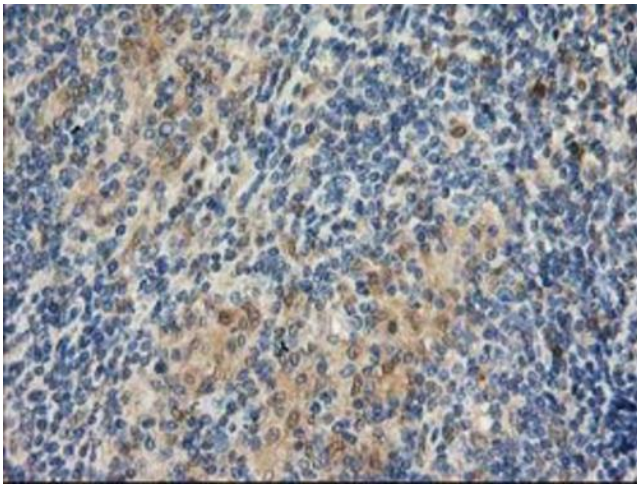
HEK293T cells were transfected with the pCMV6-ENTRY control (Left lane) or pCMV6-ENTRY LIMK1 [RC218058], Right lane) cDNA for 48 hrs and lysed. Equivalent amounts of cell lysates (5 ug per lane) were separated by SDS-PAGE and immunoblotted with anti-LIMK1. Positive lysates [LY400838] (100ug) and [LC400838] (20ug) can be purchased separately from OriGene.



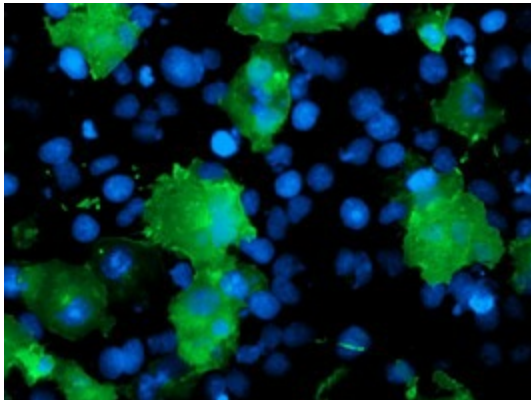
Immunohistochemical staining of paraffin-embedded Human Kidney tissue within the normal limits using anti-LIMK1 mouse monoclonal antibody. Heat-induced epitope retrieval by EDTA solution buffer pH 8.0 at 120°C for 3 min.



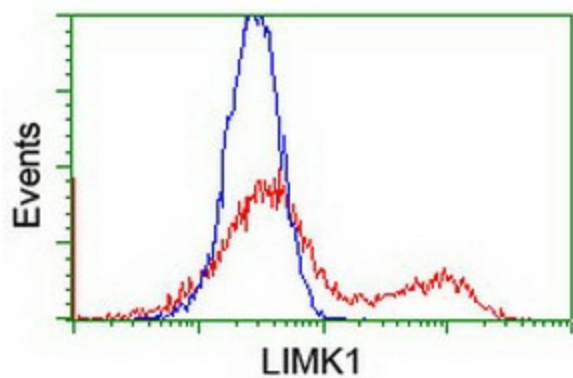
Immunohistochemical staining of paraffin-embedded Human lymph node tissue within the normal limits using anti-LIMK1 mouse monoclonal antibody. Heat-induced epitope retrieval by EDTA solution buffer pH 8.0 at 120°C for 3 min.



Immunohistochemical staining of paraffin-embedded Human lymphoma tissue using anti-LIMK1 mouse monoclonal antibody. Heat-induced epitope retrieval by EDTA solution buffer pH 8.0 at 120°C for 3 min.



Anti-LIMK1 mouse monoclonal antibody (TA503122) immunofluorescent staining of COS7 cells transiently transfected by pCMV6-ENTRY LIMK1 ([RC218058]).



HEK293T cells transfected with either [RC218058] overexpress plasmid (Red) or empty vector control plasmid (Blue) were immunostained by anti-LIMK1 antibody (TA503122), and then analyzed by flow cytometry.