

Product datasheet for **TA503116M**

LENG1 Mouse Monoclonal Antibody [Clone ID: OTI3G6]

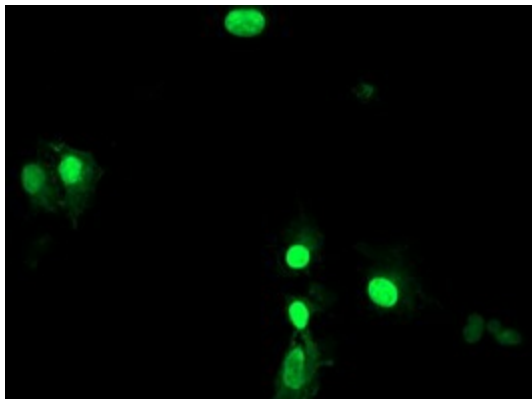
Product data:

Product Type:	Primary Antibodies
Clone Name:	OTI3G6
Applications:	FC, IF
Recommended Dilution:	IF 1:100, FLOW 1:100
Reactivity:	Human
Host:	Mouse
Isotype:	IgG1
Clonality:	Monoclonal
Immunogen:	Full length human recombinant protein of human LENG1(NP_077292) produced in HEK293T cell.
Formulation:	PBS (pH 7.3) containing 1% BSA, 50% glycerol and 0.02% sodium azide.
Concentration:	3.24 mg/ml
Purification:	Purified from mouse ascites fluids or tissue culture supernatant by affinity chromatography (protein A/G)
Conjugation:	Unconjugated
Storage:	Store at -20°C as received.
Stability:	Stable for 12 months from date of receipt.
Predicted Protein Size:	30.3 kDa
Gene Name:	leukocyte receptor cluster member 1
Database Link:	NP_077292 Entrez Gene 79165 Human Q96BZ8
Synonyms:	leukocyte receptor cluster (LRC) member 1

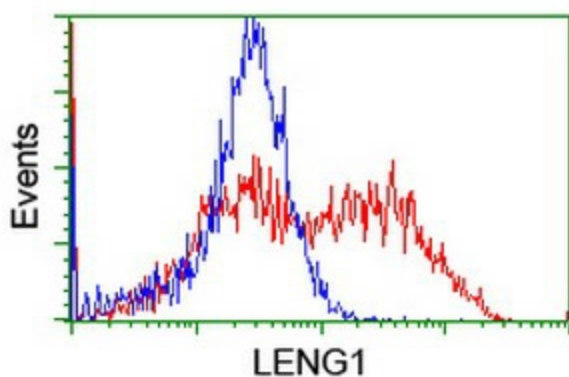


[View online »](#)

Product images:



Anti-LENG1 mouse monoclonal antibody ([TA503116]) immunofluorescent staining of COS7 cells transiently transfected by pCMV6-ENTRY LENG1 ([RC204931]).



HEK293T cells transfected with either [RC204931] overexpress plasmid (Red) or empty vector control plasmid (Blue) were immunostained by anti-LENG1 antibody ([TA503116]), and then analyzed by flow cytometry.