

## Product datasheet for **TA503113S**

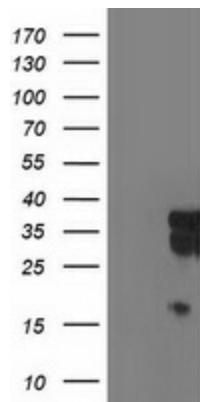
### **LENG1 Mouse Monoclonal Antibody [Clone ID: OT1E8]**

#### **Product data:**

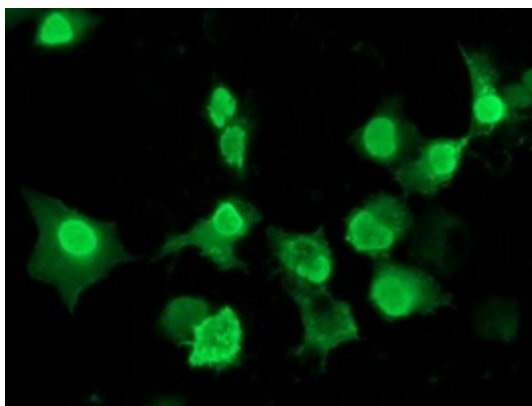
|                                |   |
|--------------------------------|---|
| <b>Product Type:</b>           | Primary Antibodies  |
| <b>Clone Name:</b>             | OT1E8   |
| <b>Applications:</b>           | FC, IF, WB  |
| <b>Recommended Dilution:</b>   | WB 1:2000, IF 1:100, FLOW 1:100   |
| <b>Reactivity:</b>             | Human   |
| <b>Host:</b>                   | Mouse   |
| <b>Isotype:</b>                | IgG1  |
| <b>Clonality:</b>              | Monoclonal  |
| <b>Immunogen:</b>              | Full length human recombinant protein of human LENG1 (NP_077292) produced in HEK293T cell.                |
| <b>Formulation:</b>            | PBS (pH 7.3) containing 1% BSA, 50% glycerol and 0.02% sodium azide.                                      |
| <b>Concentration:</b>          | 0.44 mg/ml  |
| <b>Purification:</b>           | Purified from mouse ascites fluids or tissue culture supernatant by affinity chromatography (protein A/G) |
| <b>Conjugation:</b>            | Unconjugated  |
| <b>Storage:</b>                | Store at -20°C as received.   |
| <b>Stability:</b>              | Stable for 12 months from date of receipt.  |
| <b>Predicted Protein Size:</b> | 30.3 kDa  |
| <b>Gene Name:</b>              | leukocyte receptor cluster member 1   |
| <b>Database Link:</b>          | <a href="#">NP_077292</a><br><a href="#">Entrez Gene 79165 Human</a><br><a href="#">Q96BZ8</a>            |
| <b>Synonyms:</b>               | leukocyte receptor cluster (LRC) member 1   |



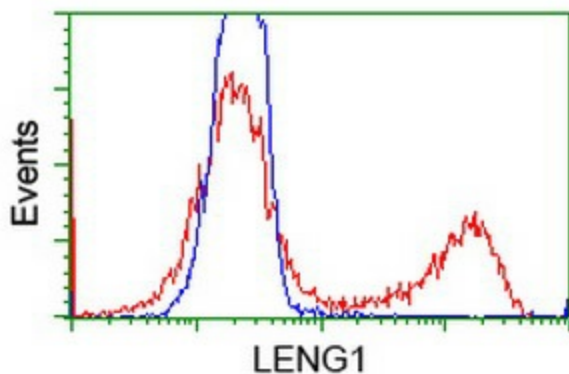
[View online »](#)

**Product images:**

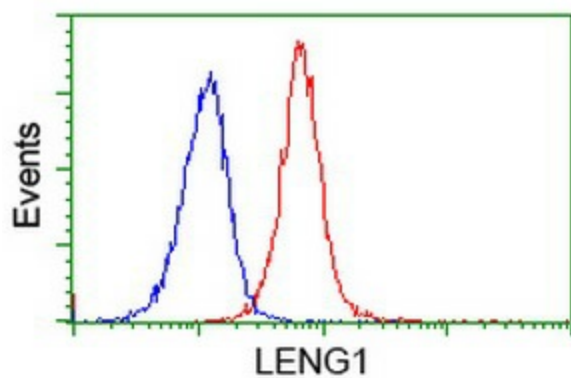
HEK293T cells were transfected with the pCMV6-ENTRY control (Left lane) or pCMV6-ENTRY LENG1 ([RC204931], Right lane) cDNA for 48 hrs and lysed. Equivalent amounts of cell lysates (5 ug per lane) were separated by SDS-PAGE and immunoblotted with anti-LENG1. Positive lysates [LY411314] (100ug) and [LC411314] (20ug) can be purchased separately from OriGene.



Anti-LENG1 mouse monoclonal antibody ([TA503113]) immunofluorescent staining of COS7 cells transiently transfected by pCMV6-ENTRY LENG1 ([RC204931]).



HEK293T cells transfected with either [RC204931] overexpress plasmid (Red) or empty vector control plasmid (Blue) were immunostained by anti-LENG1 antibody ([TA503113]), and then analyzed by flow cytometry.



Flow cytometric Analysis of Jurkat cells, using anti-LENG1 antibody ([TA503113]), (Red), compared to a nonspecific negative control antibody, (Blue).