

Product datasheet for **TA503110BM**

beta IV Tubulin (TUBB4A) Mouse Monoclonal Antibody (HRP conjugated) [Clone ID: OTI8E3]

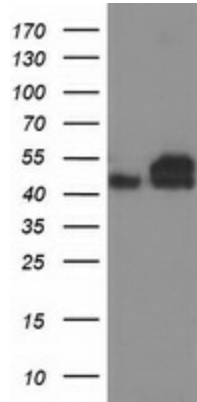
Product data:

Product Type:	Primary Antibodies
Clone Name:	OTI8E3
Applications:	FC, IF, IHC, WB
Recommended Dilution:	WB 1:500~2000, IF 1:100, FLOW 1:100, IHC: 1:150
Reactivity:	Human, Monkey, Mouse, Rat
Host:	Mouse
Isotype:	IgG2a
Clonality:	Monoclonal
Immunogen:	Full length human recombinant protein of human TUBB4 (NP_006078) produced in HEK293T cell.
Formulation:	PBS (pH 7.3) containing 1% BSA, 50% glycerol.
Concentration:	0.5 mg/ml
Purification:	Purified from mouse ascites fluids or tissue culture supernatant by affinity chromatography (protein A/G)
Conjugation:	HRP
Storage:	Store at -20°C as received.
Stability:	Stable for 12 months from date of receipt.
Predicted Protein Size:	49.4 kDa
Gene Name:	tubulin beta 4A class IVa
Database Link:	NP_006078 Entrez Gene 22153 Mouse Entrez Gene 29213 Rat Entrez Gene 703019 Monkey Entrez Gene 10382 Human P04350
Synonyms:	beta-5; DYT4; TUBB4
Protein Families:	Druggable Genome
Protein Pathways:	Gap junction, Pathogenic Escherichia coli infection

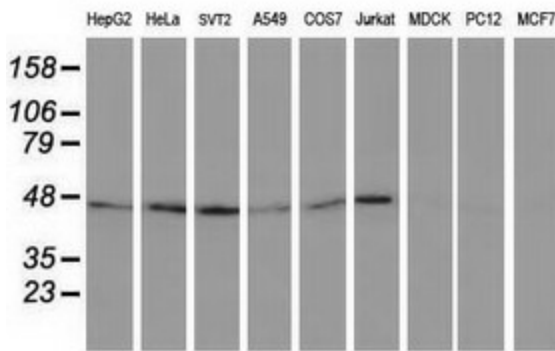


[View online »](#)

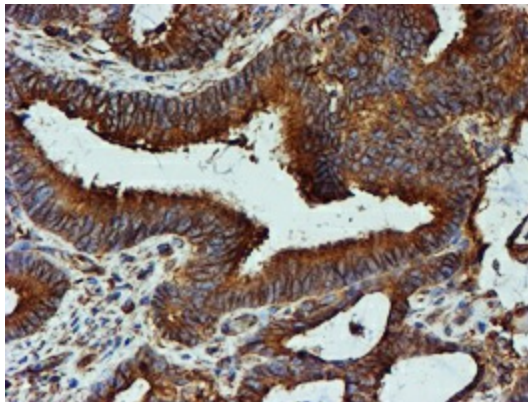
Product images:



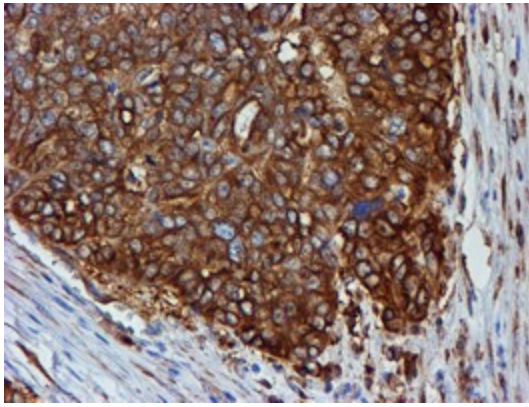
HEK293T cells were transfected with the pCMV6-ENTRY control (Left lane) or pCMV6-ENTRY TUBB4 ([RC203945], Right lane) cDNA for 48 hrs and lysed. Equivalent amounts of cell lysates (5 ug per lane) were separated by SDS-PAGE and immunoblotted with anti-TUBB4. Positive lysates [LY401833] (100ug) and [LC401833] (20ug) can be purchased separately from OriGene.



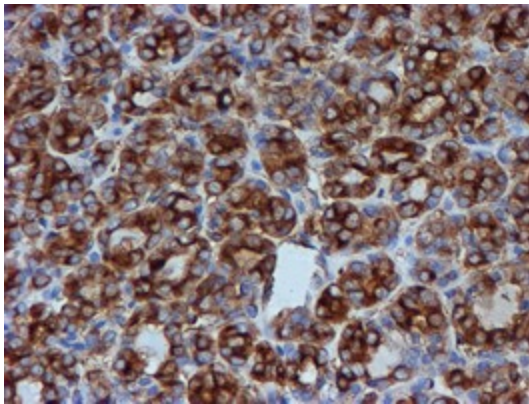
Western blot analysis of extracts (35ug) from 9 different cell lines by using anti-TUBB4 monoclonal antibody.



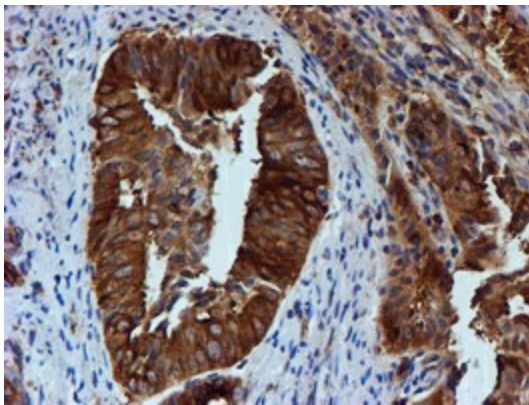
Immunohistochemical staining of paraffin-embedded Adenocarcinoma of Human colon tissue using anti-TUBB4 mouse monoclonal antibody. ([TA503110])



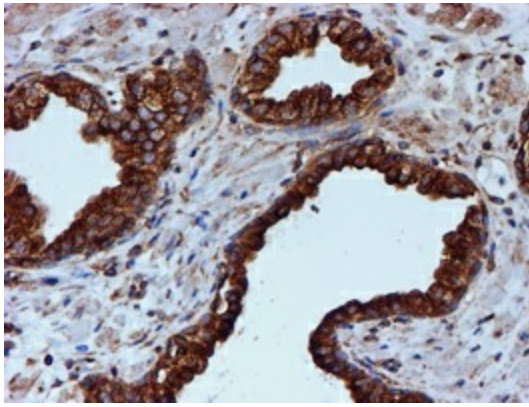
Immunohistochemical staining of paraffin-embedded Adenocarcinoma of Human ovary tissue using anti-TUBB4 mouse monoclonal antibody. ([TA503110])



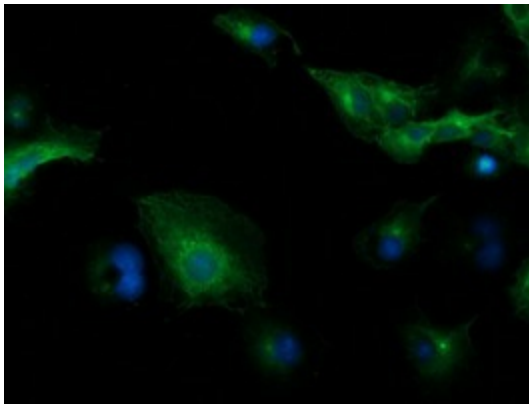
Immunohistochemical staining of paraffin-embedded Carcinoma of Human thyroid tissue using anti-TUBB4 mouse monoclonal antibody. ([TA503110])



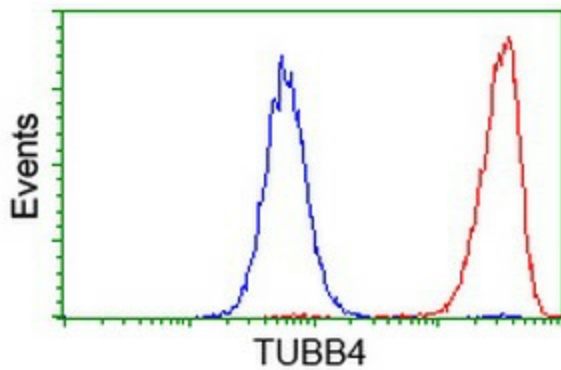
Immunohistochemical staining of paraffin-embedded Adenocarcinoma of Human endometrium tissue using anti-TUBB4 mouse monoclonal antibody. ([TA503110])



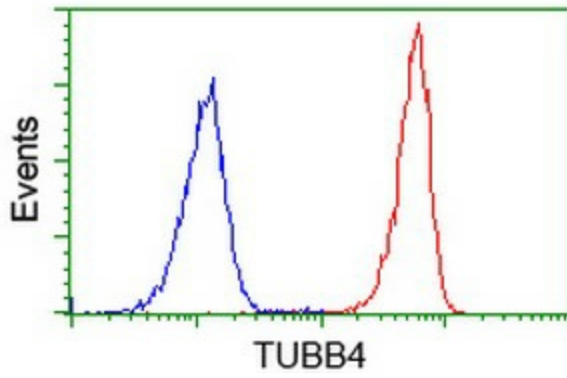
Immunohistochemical staining of paraffin-embedded Carcinoma of Human prostate tissue using anti-TUBB4 mouse monoclonal antibody. ([TA503110])



Anti-TUBB4 mouse monoclonal antibody ([TA503110]) immunofluorescent staining of COS7 cells transiently transfected by pCMV6-ENTRY TUBB4 ([RC203945]).



Flow cytometric Analysis of HeLa cells, using anti-TUBB4 antibody ([TA503110]), (Red), compared to a nonspecific negative control antibody (TA50011), (Blue).



Flow cytometric Analysis of Jurkat cells, using anti-TUBB4 antibody ([TA503110]), (Red), compared to a nonspecific negative control antibody (TA50011), (Blue).