

Product datasheet for **TA503107BM**

LSM1 Mouse Monoclonal Antibody (HRP conjugated) [Clone ID: OTI1A9]

Product data:

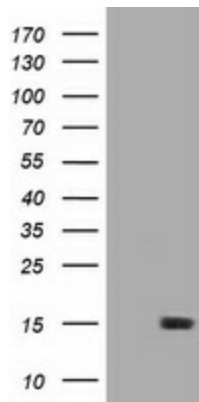
Product Type:	Primary Antibodies
Clone Name:	OTI1A9
Applications:	FC, IF, WB
Recommended Dilution:	WB 1:2000, IF 1:100, FLOW 1:100
Reactivity:	Human, Mouse, Rat
Host:	Mouse
Isotype:	IgG2b
Clonality:	Monoclonal
Immunogen:	Human recombinant protein fragment corresponding to amino acids 1-133 of human LSM1 (NP_055277) produced in E.coli.
Formulation:	PBS (pH 7.3) containing 1% BSA, 50% glycerol.
Concentration:	0.5 mg/ml
Purification:	Purified from mouse ascites fluids or tissue culture supernatant by affinity chromatography (protein A/G)
Conjugation:	HRP
Storage:	Store at -20°C as received.
Stability:	Stable for 12 months from date of receipt.
Predicted Protein Size:	15 kDa
Gene Name:	LSM1 homolog, mRNA degradation associated
Database Link:	NP_055277 Entrez Gene 67207 Mouse Entrez Gene 364624 Rat Entrez Gene 27257 Human O15116
Background:	Sm-like proteins were identified in a variety of organisms based on sequence homology with the Sm protein family (see SNRPD2; MIM 601061). Sm-like proteins contain the Sm sequence motif, which consists of 2 regions separated by a linker of variable length that folds as a loop. The Sm-like proteins are thought to form a stable heteromer present in tri-snRNP particles, which are important for pre-mRNA splicing. [supplied by OMIM]



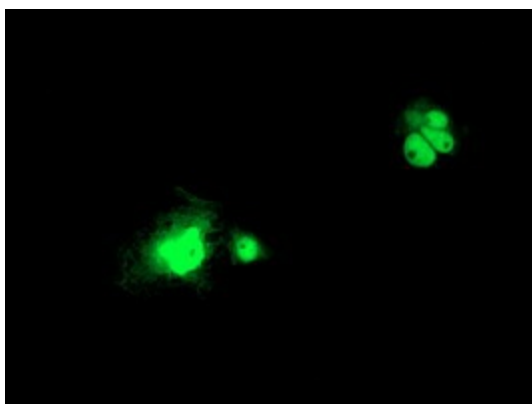
[View online »](#)

Synonyms: CASM; YJL124C
Protein Families: Stem cell - Pluripotency
Protein Pathways: RNA degradation

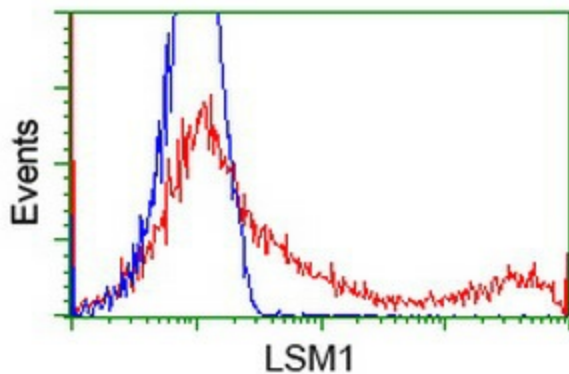
Product images:



HEK293T cells were transfected with the pCMV6-ENTRY control (Left lane) or pCMV6-ENTRY LSM1 ([RC200288], Right lane) cDNA for 48 hrs and lysed. Equivalent amounts of cell lysates (5 ug per lane) were separated by SDS-PAGE and immunoblotted with anti-LSM1. Positive lysates [LY415265] (100ug) and [LC415265] (20ug) can be purchased separately from OriGene.



Anti-LSM1 mouse monoclonal antibody ([TA503107]) immunofluorescent staining of COS7 cells transiently transfected by pCMV6-ENTRY LSM1 ([RC200288]).



HEK293T cells transfected with either [RC200288] overexpress plasmid (Red) or empty vector control plasmid (Blue) were immunostained by anti-LSM1 antibody ([TA503107]), and then analyzed by flow cytometry.