

Product datasheet for **TA503099M**

Spermine synthase (SMS) Mouse Monoclonal Antibody [Clone ID: OTI3C9]

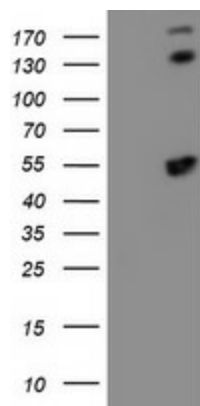
Product data:

Product Type:	Primary Antibodies
Clone Name:	OTI3C9
Applications:	FC, IF, IHC, WB
Recommended Dilution:	WB 1:500~2000, IHC 1:150, IF 1:100, FLOW 1:100
Reactivity:	Human, Dog, Rat, Monkey, Mouse
Host:	Mouse
Isotype:	IgG2b
Clonality:	Monoclonal
Immunogen:	Full length human recombinant protein of human SMS(NP_004586) produced in HEK293T cell.
Formulation:	PBS (pH 7.3) containing 1% BSA, 50% glycerol and 0.02% sodium azide.
Concentration:	0.92 mg/ml
Purification:	Purified from mouse ascites fluids or tissue culture supernatant by affinity chromatography (protein A/G)
Conjugation:	Unconjugated
Storage:	Store at -20°C as received.
Stability:	Stable for 12 months from date of receipt.
Predicted Protein Size:	41.1 kDa
Gene Name:	spermine synthase
Database Link:	NP_004586 Entrez Gene 20603 Mouse Entrez Gene 363469 Rat Entrez Gene 480861 Dog Entrez Gene 698179 Monkey Entrez Gene 6611 Human P52788
Background:	The protein encoded by this gene belongs to the spermidine/spermine synthases family. This gene encodes an ubiquitous enzyme of polyamine metabolism. [provided by RefSeq]
Synonyms:	MRSR; SPMSY; SpS; SRS

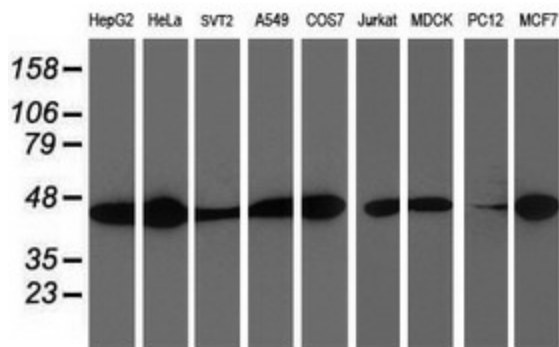

[View online »](#)

Protein Pathways: Arginine and proline metabolism, beta-Alanine metabolism, Cysteine and methionine metabolism, Glutathione metabolism, Metabolic pathways

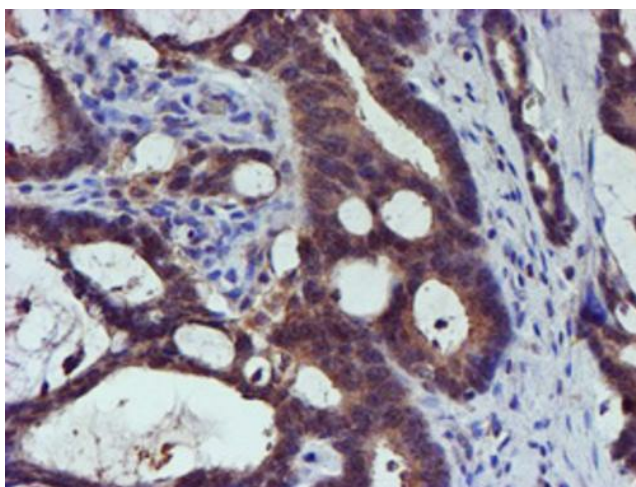
Product images:



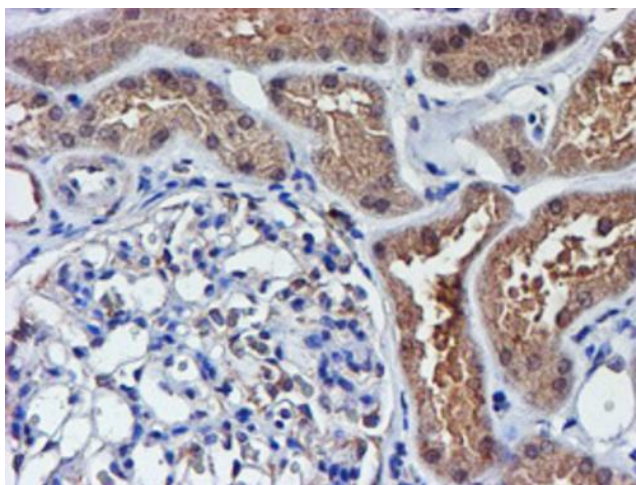
HEK293T cells were transfected with the pCMV6-ENTRY control (Cat# [PS100001], Left lane) or pCMV6-ENTRY SMS (Cat# [RC200619], Right lane) cDNA for 48 hrs and lysed. Equivalent amounts of cell lysates (5 ug per lane) were separated by SDS-PAGE and immunoblotted with anti-SMS (Cat# [TA503099]). Positive lysates [LY417877] (100ug) and [LC417877] (20ug) can be purchased separately from OriGene.



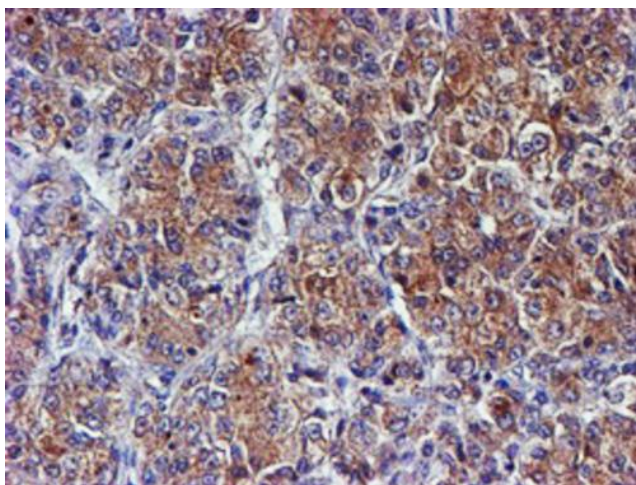
Western blot analysis of extracts (35ug) from 9 different cell lines by using anti-SMS monoclonal antibody.



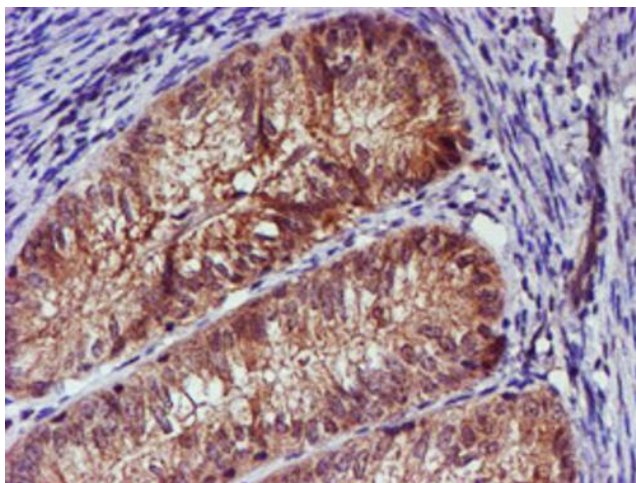
Immunohistochemical staining of paraffin-embedded Adenocarcinoma of Human colon tissue using anti-SMS mouse monoclonal antibody. Heat-induced epitope retrieval by EDTA solution buffer pH 8.0 at 120°C for 3 min.



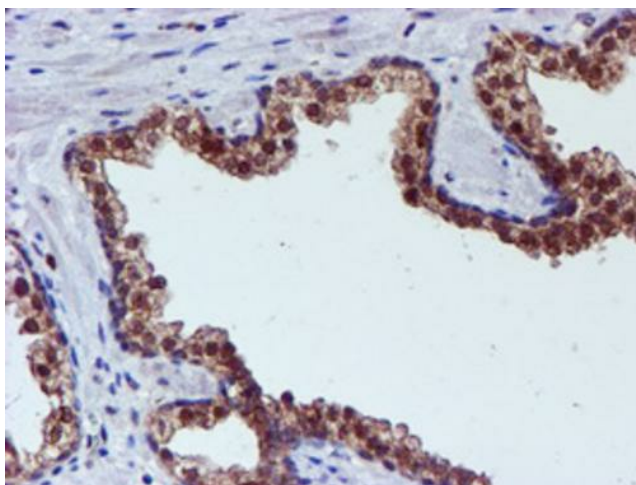
Immunohistochemical staining of paraffin-embedded Human Kidney tissue within the normal limits using anti-SMS mouse monoclonal antibody. Heat-induced epitope retrieval by EDTA solution buffer pH 8.0 at 120°C for 3 min.



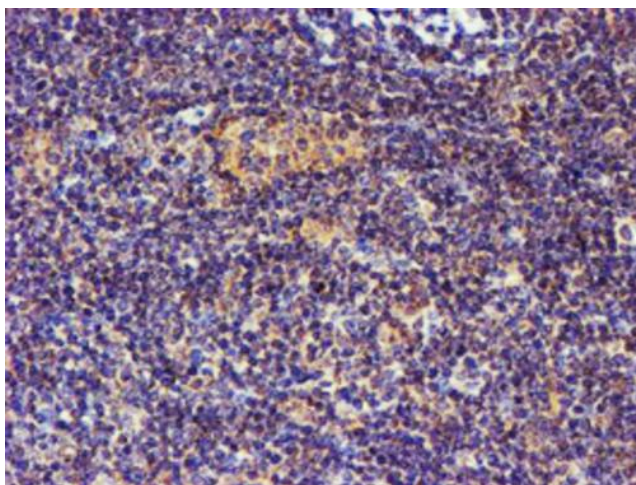
Immunohistochemical staining of paraffin-embedded Carcinoma of Human liver tissue using anti-SMS mouse monoclonal antibody. Heat-induced epitope retrieval by EDTA solution buffer pH 8.0 at 120°C for 3 min.



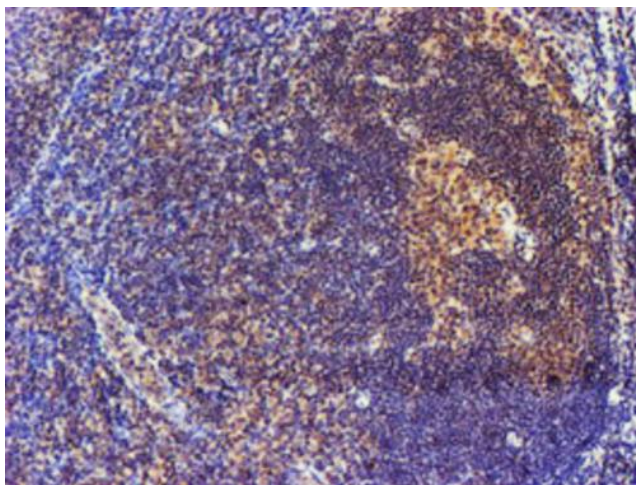
Immunohistochemical staining of paraffin-embedded Adenocarcinoma of Human endometrium tissue using anti-SMS mouse monoclonal antibody. Heat-induced epitope retrieval by EDTA solution buffer pH 8.0 at 120°C for 3 min.



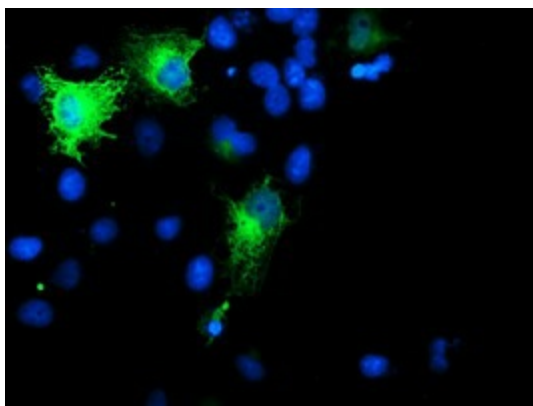
Immunohistochemical staining of paraffin-embedded Carcinoma of Human prostate tissue using anti-SMS mouse monoclonal antibody. Heat-induced epitope retrieval by EDTA solution buffer pH 8.0 at 120°C for 3 min.



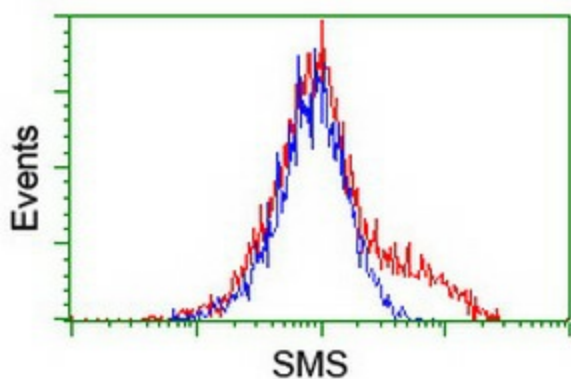
Immunohistochemical staining of paraffin-embedded Human lymphoma tissue using anti-SMS mouse monoclonal antibody. Heat-induced epitope retrieval by EDTA solution buffer pH 8.0 at 120°C for 3 min.



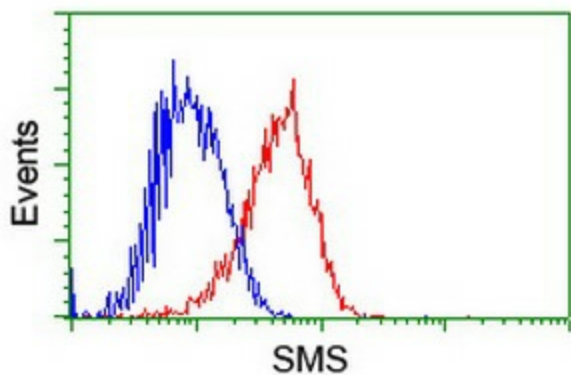
Immunohistochemical staining of paraffin-embedded Human tonsil within the normal limits using anti-SMS mouse monoclonal antibody. Heat-induced epitope retrieval by EDTA solution buffer pH 8.0 at 120°C for 3 min.



Anti-SMS mouse monoclonal antibody ([TA503099]) immunofluorescent staining of COS7 cells transiently transfected by pCMV6-ENTRY SMS ([RC200619]).



HEK293T cells transfected with either [RC200619] overexpress plasmid (Red) or empty vector control plasmid (Blue) were immunostained by anti-SMS antibody ([TA503099]), and then analyzed by flow cytometry.



Flow cytometric Analysis of HeLa cells, using anti-SMS antibody ([TA503099]), (Red), compared to a nonspecific negative control antibody, (Blue).