

## Product datasheet for **TA503096**

### Spermine synthase (SMS) Mouse Monoclonal Antibody [Clone ID: OTI5C12]

#### Product data:

Product Type:	Primary Antibodies
Clone Name:	OTI5C12
Applications:	FC, IF, WB
Recommended Dilution:	WB 1:2000, IF 1:50~100, FLOW 1:100
Reactivity:	Human, Mouse, Rat
Host:	Mouse
Isotype:	IgG1
Clonality:	Monoclonal
Immunogen:	Full length human recombinant protein of human SMS (NP_004586) produced in HEK293T cell.
Formulation:	PBS (pH 7.3) containing 1% BSA, 50% glycerol and 0.02% sodium azide.
Concentration:	1 mg/ml
Purification:	Purified from mouse ascites fluids or tissue culture supernatant by affinity chromatography (protein A/G)
Conjugation:	Unconjugated
Storage:	Store at -20°C as received.
Stability:	Stable for 12 months from date of receipt.
Predicted Protein Size:	41.1 kDa
Gene Name:	spermine synthase
Database Link:	<a href="#">NP_004586</a> <a href="#">Entrez Gene 20603 Mouse</a> <a href="#">Entrez Gene 363469 Rat</a> <a href="#">Entrez Gene 6611 Human</a> <a href="#">P52788</a>
Background:	This gene encodes a protein belonging to the spermidine/spermin synthase family. Pseudogenes of this gene are located on chromosomes 1, 5, 6 and X. Mutations in this gene are associated with X-linked Snyder-Robinson mental retardation syndrome. Multiple transcript variants encoding different isoforms have been found for this gene. [provided by RefSeq, May 2012]

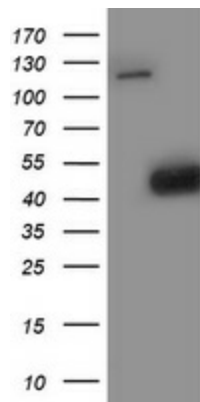


[View online »](#)

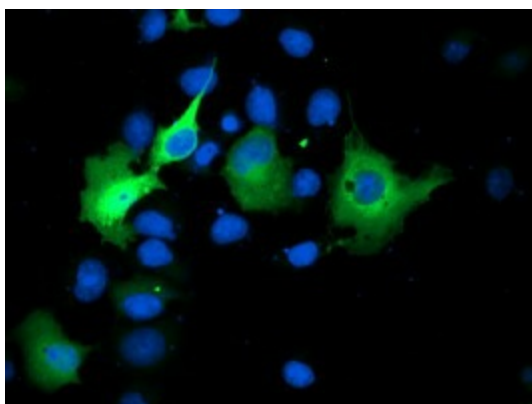
**Synonyms:** MRSR; SPMSY; SpS; SRS

**Protein Pathways:** Arginine and proline metabolism, beta-Alanine metabolism, Cysteine and methionine metabolism, Glutathione metabolism, Metabolic pathways

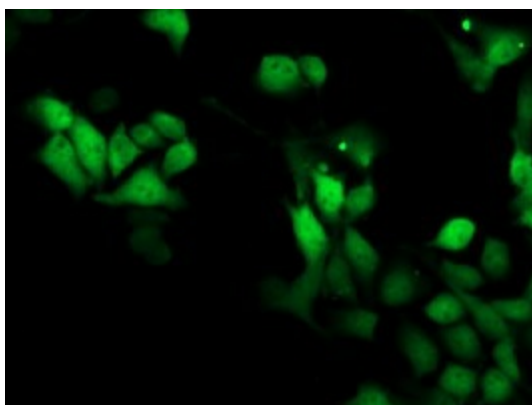
**Product images:**



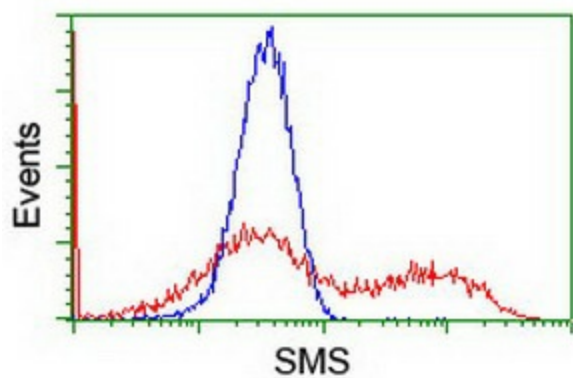
HEK293T cells were transfected with the pCMV6-ENTRY control (Left lane) or pCMV6-ENTRY SMS ([RC200619], Right lane) cDNA for 48 hrs and lysed. Equivalent amounts of cell lysates (5 ug per lane) were separated by SDS-PAGE and immunoblotted with anti-SMS. Positive lysates [LY417877] (100ug) and [LC417877] (20ug) can be purchased separately from OriGene.



Anti-SMS mouse monoclonal antibody (TA503096) immunofluorescent staining of COS7 cells transiently transfected by pCMV6-ENTRY SMS ([RC200619]).



Immunofluorescent staining of HeLa cells using anti-SMS mouse monoclonal antibody (TA503096).



HEK293T cells transfected with either [RC200619] overexpress plasmid (Red) or empty vector control plasmid (Blue) were immunostained by anti-SMS antibody (TA503096), and then analyzed by flow cytometry.