

Product datasheet for **TA503095BM**

Spermine synthase (SMS) Mouse Monoclonal Antibody (HRP conjugated) [Clone ID: OTI 1A7]

Product data:

Product Type:	Primary Antibodies
Clone Name:	OTI 1A7
Applications:	FC, IF, WB
Recommended Dilution:	WB 1:2000, IF 1:100, FLOW 1:100
Reactivity:	Human, Mouse, Rat
Host:	Mouse
Isotype:	IgG1
Clonality:	Monoclonal
Immunogen:	Full length human recombinant protein of human SMS (NP_004586) produced in HEK293T cell.
Formulation:	PBS (pH 7.3) containing 1% BSA, 50% glycerol.
Concentration:	0.5 mg/ml
Purification:	Purified from mouse ascites fluids or tissue culture supernatant by affinity chromatography (protein A/G)
Conjugation:	HRP
Storage:	Store at -20°C as received.
Stability:	Stable for 12 months from date of receipt.
Predicted Protein Size:	41.1 kDa
Gene Name:	spermine synthase
Database Link:	NP_004586 Entrez Gene 20603 Mouse Entrez Gene 363469 Rat Entrez Gene 6611 Human P52788
Background:	This gene encodes a protein belonging to the spermidine/spermin synthase family. Pseudogenes of this gene are located on chromosomes 1, 5, 6 and X. Mutations in this gene are associated with X-linked Snyder-Robinson mental retardation syndrome. Multiple transcript variants encoding different isoforms have been found for this gene. [provided by RefSeq, May 2012]

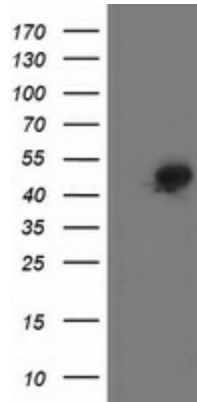


[View online »](#)

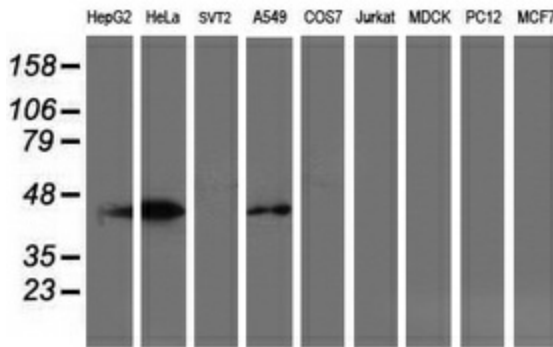
Synonyms: MRSR; SPMSY; SpS; SRS

Protein Pathways: Arginine and proline metabolism, beta-Alanine metabolism, Cysteine and methionine metabolism, Glutathione metabolism, Metabolic pathways

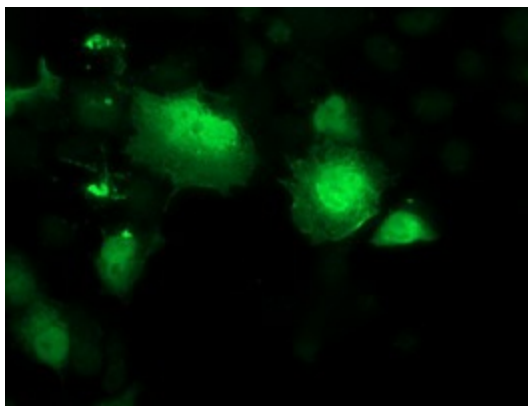
Product images:



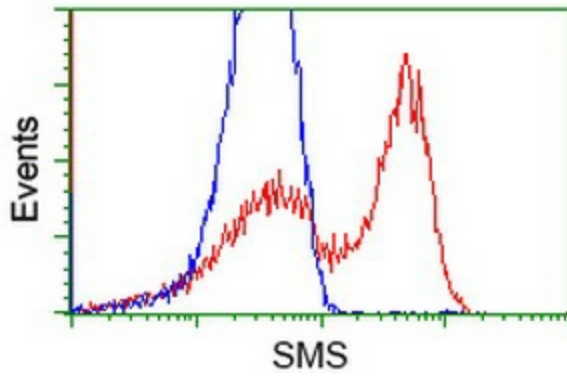
HEK293T cells were transfected with the pCMV6-ENTRY control (Left lane) or pCMV6-ENTRY SMS ([RC200619], Right lane) cDNA for 48 hrs and lysed. Equivalent amounts of cell lysates (5 ug per lane) were separated by SDS-PAGE and immunoblotted with anti-SMS. Positive lysates [LY417877] (100ug) and [LC417877] (20ug) can be purchased separately from OriGene.



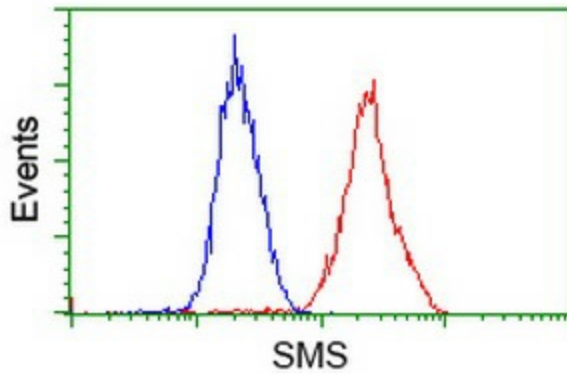
Western blot analysis of extracts (35ug) from 9 different cell lines by using anti-SMS monoclonal antibody (HepG2: human; HeLa: human; SVT2: mouse; A549: human; COS7: monkey; Jurkat: human; MDCK: canine; PC12: rat; MCF7: human).



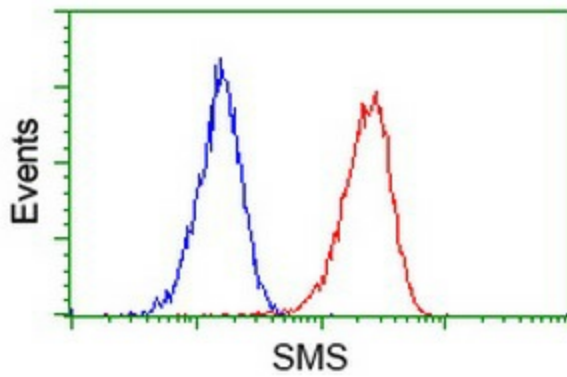
Anti-SMS mouse monoclonal antibody ([TA503095]) immunofluorescent staining of COS7 cells transiently transfected by pCMV6-ENTRY SMS ([RC200619]).



HEK293T cells transfected with either [RC200619] overexpress plasmid (Red) or empty vector control plasmid (Blue) were immunostained by anti-SMS antibody ([TA503095]), and then analyzed by flow cytometry.



Flow cytometric Analysis of HeLa cells, using anti-SMS antibody ([TA503095]), (Red), compared to a nonspecific negative control antibody, (Blue).



Flow cytometric Analysis of Jurkat cells, using anti-SMS antibody ([TA503095]), (Red), compared to a nonspecific negative control antibody, (Blue).