

Product datasheet for **TA503092AM**

SM22 alpha (TAGLN) Mouse Monoclonal Antibody (Biotin conjugated) [Clone ID: OTI8C8]

Product data:

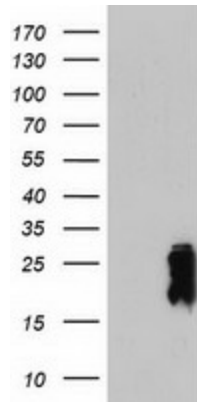
| | |
|-------------------------|---|
| Product Type: | Primary Antibodies |
| Clone Name: | OTI8C8 |
| Applications: | IF, IHC, WB |
| Recommended Dilution: | WB 1:500~2000, IHC 1:150, IF 1:100 |
| Reactivity: | Human, Mouse, Rat |
| Host: | Mouse |
| Isotype: | IgG1 |
| Clonality: | Monoclonal |
| Immunogen: | Full length human recombinant protein of human TAGLN(NP_003177) produced in HEK293T cell. |
| Formulation: | PBS (pH 7.3) containing 1% BSA, 50% glycerol and 0.02% sodium azide. |
| Concentration: | 0.5 mg/ml |
| Purification: | Purified from mouse ascites fluids or tissue culture supernatant by affinity chromatography (protein A/G) |
| Conjugation: | Biotin |
| Storage: | Store at -20°C as received. |
| Stability: | Stable for 12 months from date of receipt. |
| Predicted Protein Size: | 22.4 kDa |
| Gene Name: | transgelin |
| Database Link: | NP_003177 Entrez Gene 21345 Mouse Entrez Gene 25123 Rat Entrez Gene 6876 Human Q01995 |
| Background: | The protein encoded by this gene is a transformation and shape-change sensitive actin cross-linking/gelling protein found in fibroblasts and smooth muscle. Its expression is down-regulated in many cell lines, and this down-regulation may be an early and sensitive marker for the onset of transformation. A functional role of this protein is unclear. Two transcript variants encoding the same protein have been found for this gene. [provided by RefSeq] |



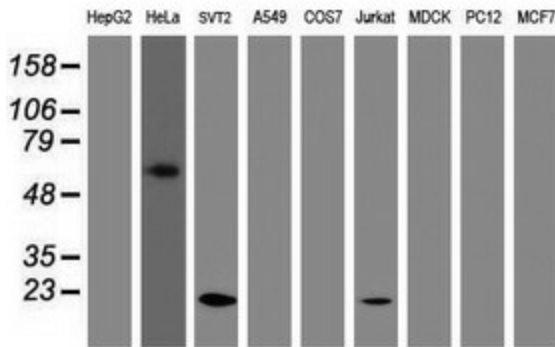
[View online »](#)

Synonyms: SM22; SMCC; TAGLN1; WS3-10

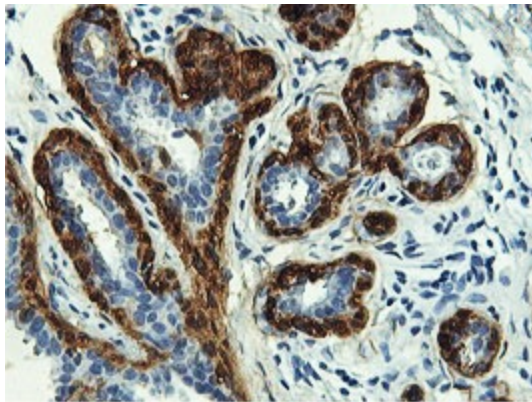
Product images:



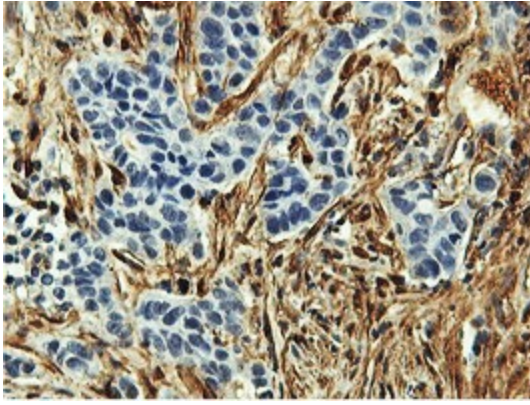
HEK293T cells were transfected with the pCMV6-ENTRY control (Cat# [PS100001], Left lane) or pCMV6-ENTRY TAGLN (Cat# [RC215789], Right lane) cDNA for 48 hrs and lysed. Equivalent amounts of cell lysates (5 ug per lane) were separated by SDS-PAGE and immunoblotted with anti-TAGLN (Cat# [TA503092]). Positive lysates [LY401104] (100ug) and [LC401104] (20ug) can be purchased separately from OriGene.



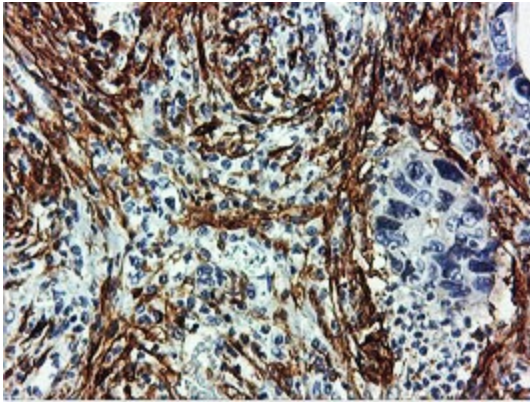
Western blot analysis of extracts (35ug) from 9 different cell lines by using anti-TAGLN monoclonal antibody.



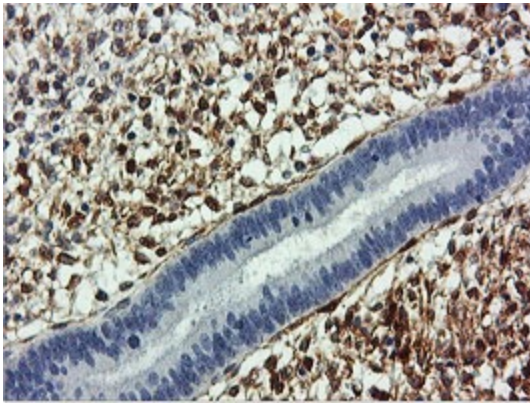
Immunohistochemical staining of paraffin-embedded Human breast tissue within the normal limits using anti-TAGLN mouse monoclonal antibody. (Heat-induced epitope retrieval by 10mM citric buffer, pH6.0, 100°C for 10min, [TA503092])



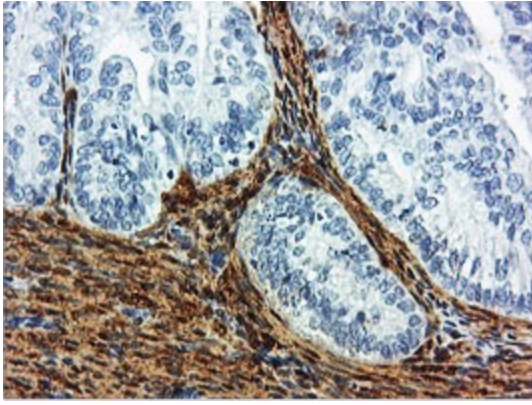
Immunohistochemical staining of paraffin-embedded Carcinoma of Human lung tissue using anti-TAGLN mouse monoclonal antibody. (Heat-induced epitope retrieval by 10mM citric buffer, pH6.0, 100°C for 10min, [TA503092])



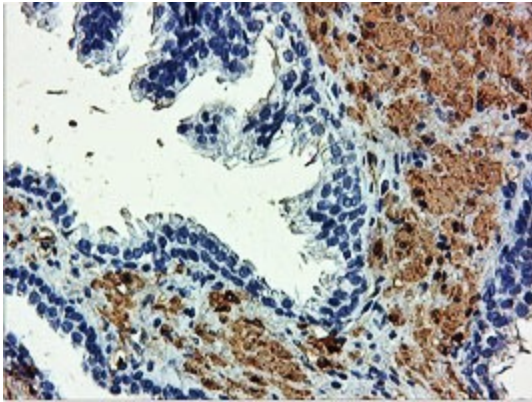
Immunohistochemical staining of paraffin-embedded Carcinoma of Human pancreas tissue using anti-TAGLN mouse monoclonal antibody. (Heat-induced epitope retrieval by 10mM citric buffer, pH6.0, 100°C for 10min, [TA503092])



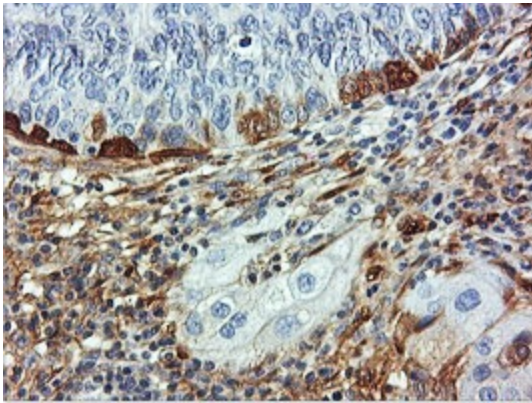
Immunohistochemical staining of paraffin-embedded Human endometrium tissue within the normal limits using anti-TAGLN mouse monoclonal antibody. (Heat-induced epitope retrieval by 10mM citric buffer, pH6.0, 100°C for 10min, [TA503092])



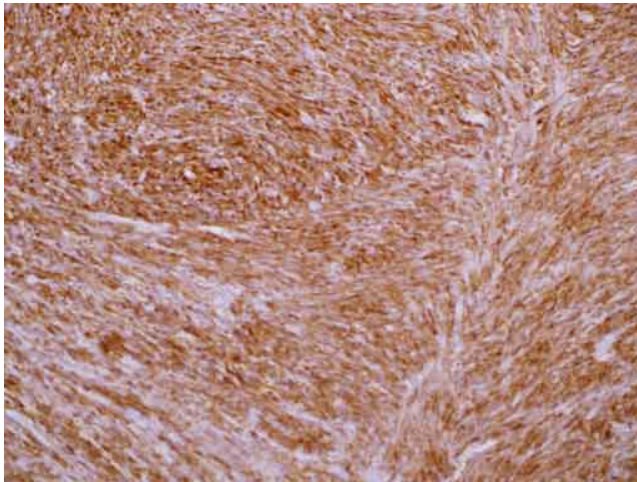
Immunohistochemical staining of paraffin-embedded Adenocarcinoma of Human endometrium tissue using anti-TAGLN mouse monoclonal antibody. (Heat-induced epitope retrieval by 10mM citric buffer, pH6.0, 100°C for 10min, [TA503092])



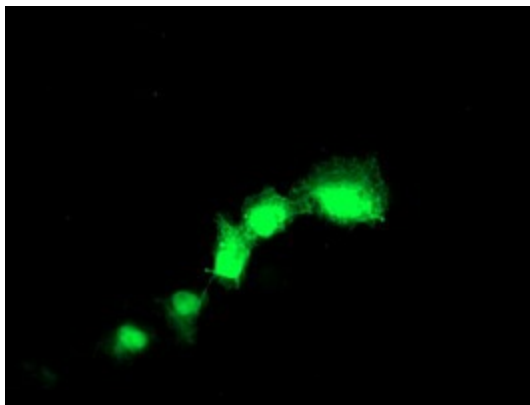
Immunohistochemical staining of paraffin-embedded Human prostate tissue within the normal limits using anti-TAGLN mouse monoclonal antibody. (Heat-induced epitope retrieval by 10mM citric buffer, pH6.0, 100°C for 10min, [TA503092])



Immunohistochemical staining of paraffin-embedded Carcinoma of Human bladder tissue using anti-TAGLN mouse monoclonal antibody. (Heat-induced epitope retrieval by 10mM citric buffer, pH6.0, 100°C for 10min, [TA503092])



Immunohistochemical staining of paraffin-embedded human breast cancer tissue using anti-TAGLN mouse monoclonal antibody. (Heat-induced epitope retrieval, [TA503092]). Data courtesy of a collaborative pathologist.



Anti-TAGLN mouse monoclonal antibody ([TA503092]) immunofluorescent staining of COS7 cells transiently transfected by pCMV6-ENTRY TAGLN ([RC215789]).