

Product datasheet for **TA503091BM**

Spermine synthase (SMS) Mouse Monoclonal Antibody (HRP conjugated) [Clone ID: OTI2G8]

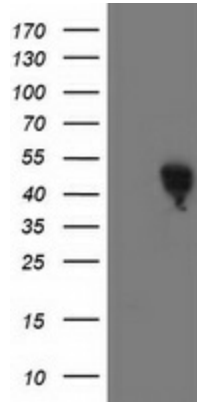
Product data:

Product Type:	Primary Antibodies
Clone Name:	OTI2G8
Applications:	FC, IF, IHC, WB
Recommended Dilution:	WB 1:2000, IHC 1:150, IF 1:100, FLOW 1:100
Reactivity:	Human, Mouse, Rat
Host:	Mouse
Isotype:	IgG2a
Clonality:	Monoclonal
Immunogen:	Full length human recombinant protein of human SMS (NP_004586) produced in HEK293T cell.
Formulation:	PBS (pH 7.3) containing 1% BSA, 50% glycerol.
Concentration:	0.5 mg/ml
Purification:	Purified from mouse ascites fluids or tissue culture supernatant by affinity chromatography (protein A/G)
Conjugation:	HRP
Storage:	Store at -20°C as received.
Stability:	Stable for 12 months from date of receipt.
Predicted Protein Size:	41.1 kDa
Gene Name:	spermine synthase
Database Link:	NP_004586 Entrez Gene 20603 Mouse Entrez Gene 363469 Rat Entrez Gene 6611 Human P52788
Background:	The protein encoded by this gene belongs to the spermidine/spermine synthases family. This gene encodes an ubiquitous enzyme of polyamine metabolism. [provided by RefSeq]
Synonyms:	MRSR; SPMSY; SpS; SRS
Protein Pathways:	Arginine and proline metabolism, beta-Alanine metabolism, Cysteine and methionine metabolism, Glutathione metabolism, Metabolic pathways

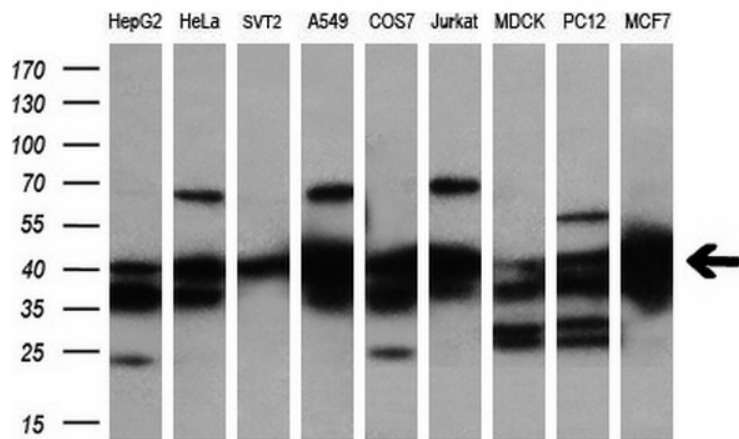


[View online »](#)

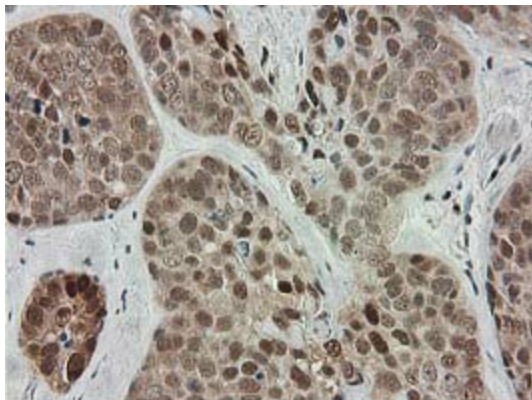
Product images:



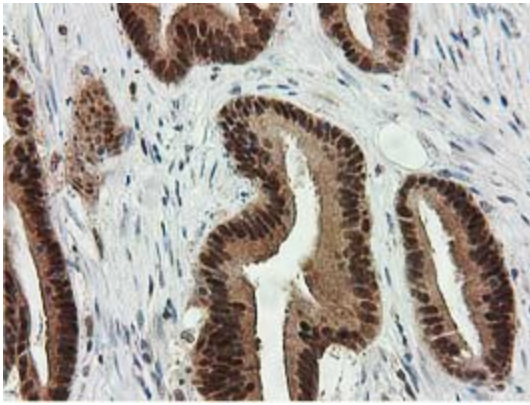
HEK293T cells were transfected with the pCMV6-ENTRY control (Left lane) or pCMV6-ENTRY SMS ([RC200619], Right lane) cDNA for 48 hrs and lysed. Equivalent amounts of cell lysates (5 ug per lane) were separated by SDS-PAGE and immunoblotted with anti-SMS. Positive lysates [LY417877] (100ug) and [LC417877] (20ug) can be purchased separately from OriGene.



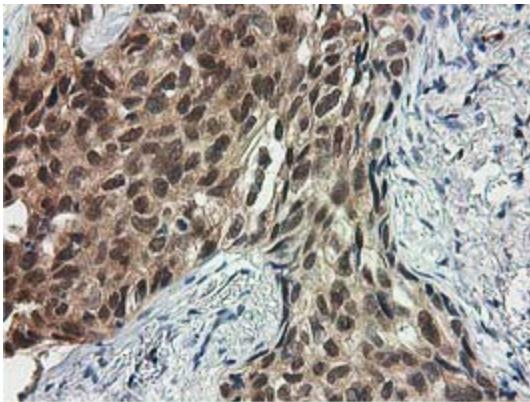
Western blot analysis of extracts (35ug) from 9 different cell lines by using anti-SMS monoclonal antibody (HepG2: human; HeLa: human; SVT2: mouse; A549: human; COS7: monkey; Jurkat: human; MDCK: canine; PC12: rat; MCF7: human) (1:200).



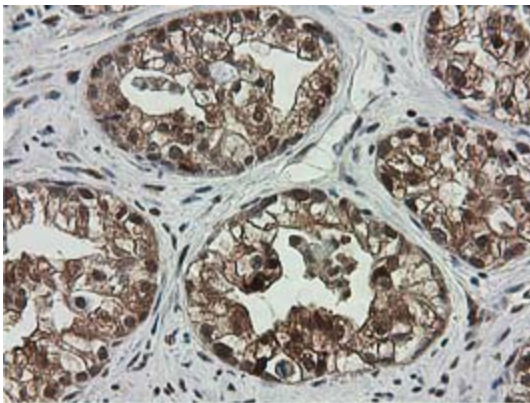
Immunohistochemical staining of paraffin-embedded Adenocarcinoma of Human breast tissue using anti-SMS mouse monoclonal antibody. (Heat-induced epitope retrieval by 10mM citric buffer, pH6.0, 100°C for 10min, [TA503091])



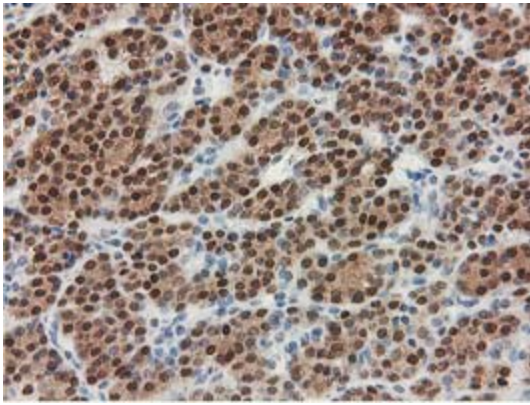
Immunohistochemical staining of paraffin-embedded Adenocarcinoma of Human colon tissue using anti-SMS mouse monoclonal antibody. (Heat-induced epitope retrieval by 10mM citric buffer, pH6.0, 100°C for 10min, [TA503091])



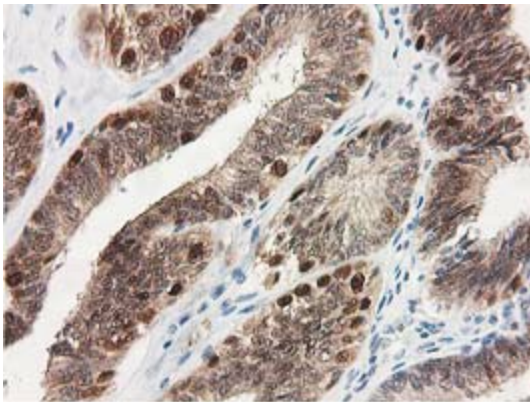
Immunohistochemical staining of paraffin-embedded Carcinoma of Human lung tissue using anti-SMS mouse monoclonal antibody. (Heat-induced epitope retrieval by 10mM citric buffer, pH6.0, 100°C for 10min, [TA503091])



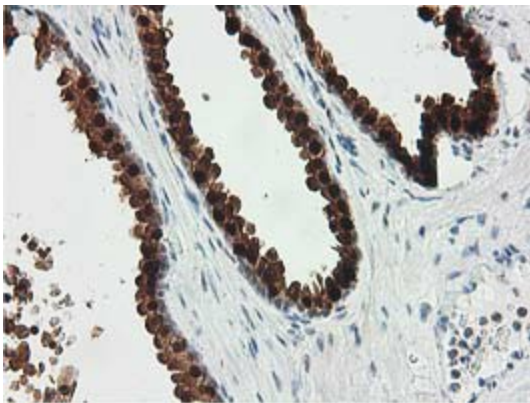
Immunohistochemical staining of paraffin-embedded Adenocarcinoma of Human ovary tissue using anti-SMS mouse monoclonal antibody. (Heat-induced epitope retrieval by 10mM citric buffer, pH6.0, 100°C for 10min, [TA503091])



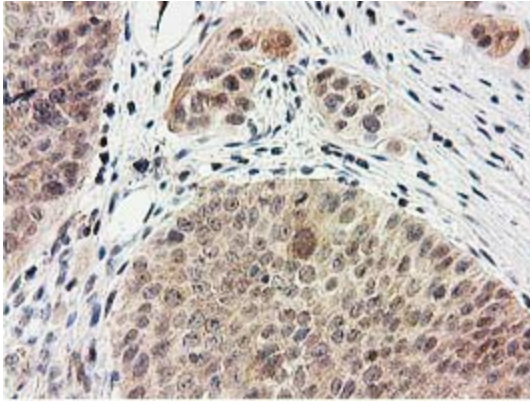
Immunohistochemical staining of paraffin-embedded Carcinoma of Human thyroid tissue using anti-SMS mouse monoclonal antibody. (Heat-induced epitope retrieval by 10mM citric buffer, pH6.0, 100°C for 10min, [TA503091])



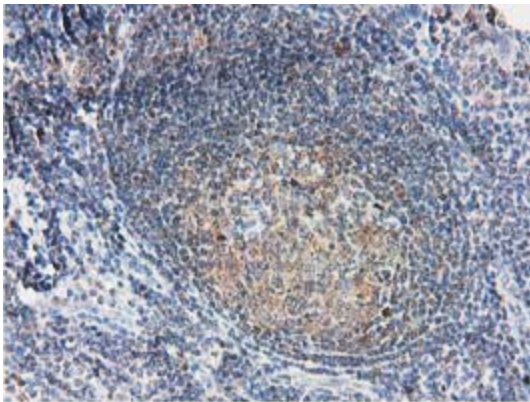
Immunohistochemical staining of paraffin-embedded Adenocarcinoma of Human endometrium tissue using anti-SMS mouse monoclonal antibody. (Heat-induced epitope retrieval by 10mM citric buffer, pH6.0, 100°C for 10min, [TA503091])



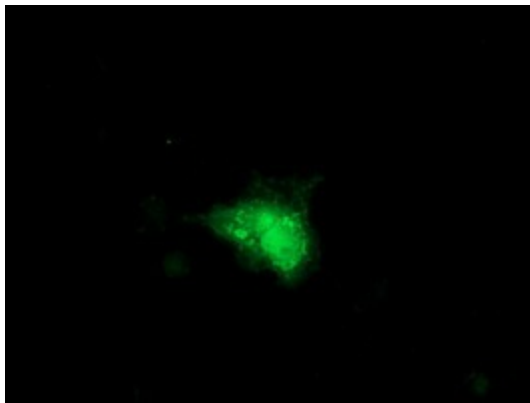
Immunohistochemical staining of paraffin-embedded Human prostate tissue within the normal limits using anti-SMS mouse monoclonal antibody. (Heat-induced epitope retrieval by 10mM citric buffer, pH6.0, 100°C for 10min, [TA503091])



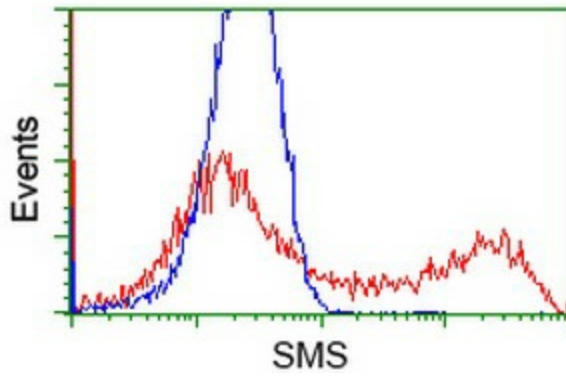
Immunohistochemical staining of paraffin-embedded Carcinoma of Human bladder tissue using anti-SMS mouse monoclonal antibody. (Heat-induced epitope retrieval by 10mM citric buffer, pH6.0, 100°C for 10min, [TA503091])



Immunohistochemical staining of paraffin-embedded Human lymph node tissue within the normal limits using anti-SMS mouse monoclonal antibody. (Heat-induced epitope retrieval by 10mM citric buffer, pH6.0, 100°C for 10min, [TA503091])



Anti-SMS mouse monoclonal antibody ([TA503091]) immunofluorescent staining of COS7 cells transiently transfected by pCMV6-ENTRY SMS ([RC200619]).



HEK293T cells transfected with either [RC200619] overexpress plasmid (Red) or empty vector control plasmid (Blue) were immunostained by anti-SMS antibody ([TA503091]), and then analyzed by flow cytometry.