

## Product datasheet for **TA503084BM**

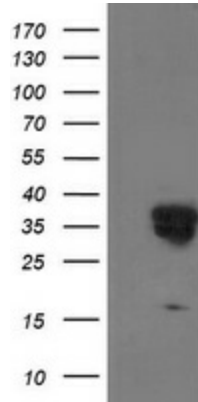
### **LENG1 Mouse Monoclonal Antibody (HRP conjugated) [Clone ID: OT11E6]**

#### **Product data:**

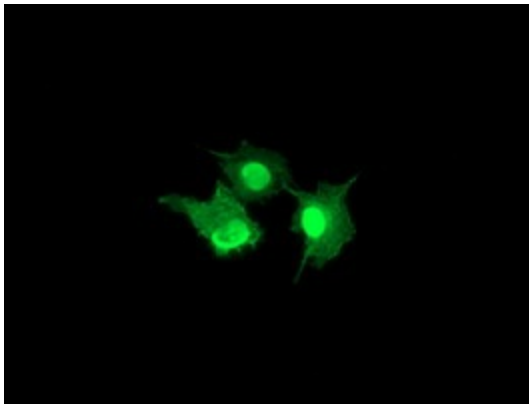
Product Type:	Primary Antibodies
Clone Name:	OT11E6
Applications:	FC, IF, WB
Recommended Dilution:	WB 1:2000, IF 1:100, FLOW 1:100
Reactivity:	Human
Host:	Mouse
Isotype:	IgG1
Clonality:	Monoclonal
Immunogen:	Full length human recombinant protein of human LENG1 (NP_077292) produced in HEK293T cell.
Formulation:	PBS (pH 7.3) containing 1% BSA, 50% glycerol.
Concentration:	0.5 mg/ml
Purification:	Purified from mouse ascites fluids or tissue culture supernatant by affinity chromatography (protein A/G)
Conjugation:	HRP
Storage:	Store at -20°C as received.
Stability:	Stable for 12 months from date of receipt.
Predicted Protein Size:	30.3 kDa
Gene Name:	leukocyte receptor cluster member 1
Database Link:	<a href="#">NP_077292</a> <a href="#">Entrez Gene 79165 Human</a> <a href="#">Q96BZ8</a>
Synonyms:	leukocyte receptor cluster (LRC) member 1



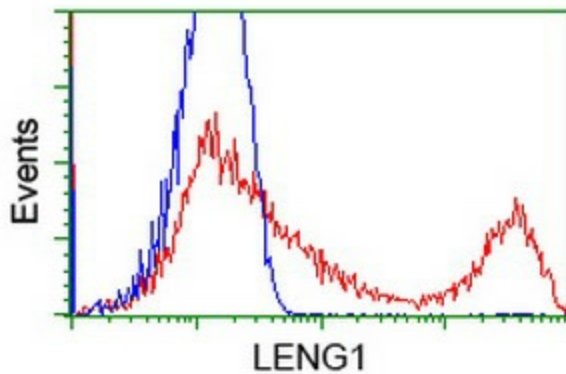
[View online »](#)

**Product images:**

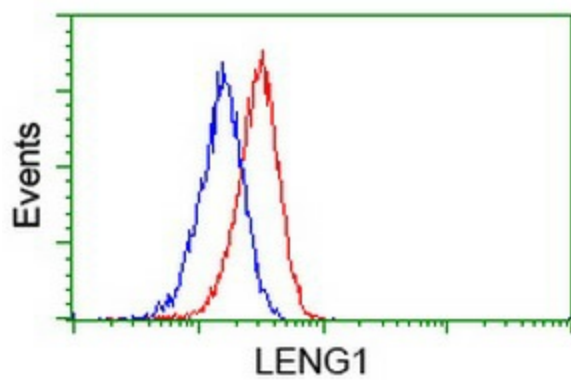
HEK293T cells were transfected with the pCMV6-ENTRY control (Left lane) or pCMV6-ENTRY LENG1 ([RC204931], Right lane) cDNA for 48 hrs and lysed. Equivalent amounts of cell lysates (5 ug per lane) were separated by SDS-PAGE and immunoblotted with anti-LENG1. Positive lysates [LY411314] (100ug) and [LC411314] (20ug) can be purchased separately from OriGene.



Anti-LENG1 mouse monoclonal antibody ([TA503084]) immunofluorescent staining of COS7 cells transiently transfected by pCMV6-ENTRY LENG1 ([RC204931]).



HEK293T cells transfected with either [RC204931] overexpress plasmid (Red) or empty vector control plasmid (Blue) were immunostained by anti-LENG1 antibody ([TA503084]), and then analyzed by flow cytometry.



Flow cytometric Analysis of Jurkat cells, using anti-LENG1 antibody ([TA503084]), (Red), compared to a nonspecific negative control antibody, (Blue).