

Product datasheet for **TA503083M**

LENG1 Mouse Monoclonal Antibody [Clone ID: OTI1G10]

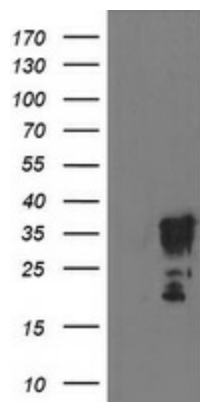
Product data:

Product Type:	Primary Antibodies
Clone Name:	OTI1G10
Applications:	FC, IF, WB
Recommended Dilution:	WB 1:2000, IF 1:100, FLOW 1:100
Reactivity:	Human
Host:	Mouse
Isotype:	IgG1
Clonality:	Monoclonal
Immunogen:	Full length human recombinant protein of human LENG1 (NP_077292) produced in HEK293T cell.
Formulation:	PBS (pH 7.3) containing 1% BSA, 50% glycerol and 0.02% sodium azide.
Concentration:	0.52 mg/ml
Purification:	Purified from mouse ascites fluids or tissue culture supernatant by affinity chromatography (protein A/G)
Conjugation:	Unconjugated
Storage:	Store at -20°C as received.
Stability:	Stable for 12 months from date of receipt.
Predicted Protein Size:	30.3 kDa
Gene Name:	leukocyte receptor cluster member 1
Database Link:	NP_077292 Entrez Gene 79165 Human Q96BZ8
Synonyms:	leukocyte receptor cluster (LRC) member 1

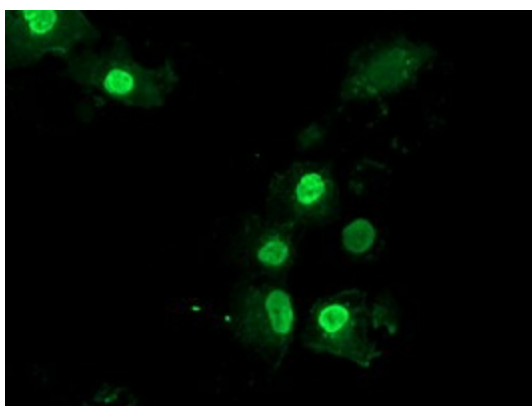


[View online »](#)

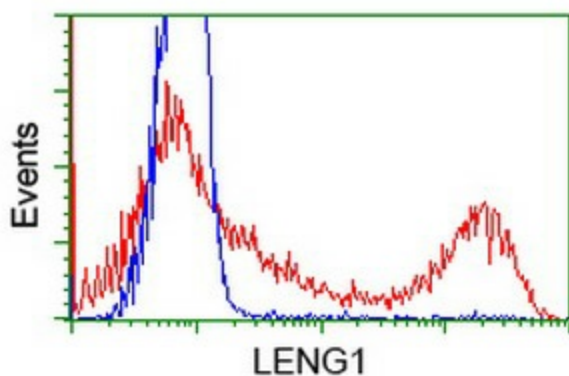
Product images:



HEK293T cells were transfected with the pCMV6-ENTRY control (Left lane) or pCMV6-ENTRY LENG1 ([RC204931], Right lane) cDNA for 48 hrs and lysed. Equivalent amounts of cell lysates (5 ug per lane) were separated by SDS-PAGE and immunoblotted with anti-LENG1. Positive lysates [LY411314] (100ug) and [LC411314] (20ug) can be purchased separately from OriGene.



Anti-LENG1 mouse monoclonal antibody ([TA503083]) immunofluorescent staining of COS7 cells transiently transfected by pCMV6-ENTRY LENG1 ([RC204931]).



HEK293T cells transfected with either [RC204931] overexpress plasmid (Red) or empty vector control plasmid (Blue) were immunostained by anti-LENG1 antibody ([TA503083]), and then analyzed by flow cytometry.