

## Product datasheet for **TA503083**

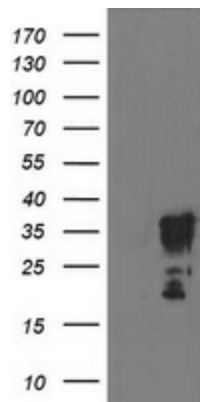
### **LENG1 Mouse Monoclonal Antibody [Clone ID: OTI1G10]**

#### **Product data:**

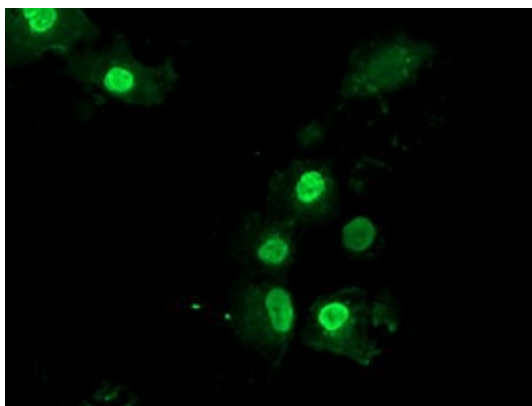
<b>Product Type:</b>	Primary Antibodies
<b>Clone Name:</b>	OTI1G10
<b>Applications:</b>	FC, IF, WB
<b>Recommended Dilution:</b>	WB 1:2000, IF 1:100, FLOW 1:100
<b>Reactivity:</b>	Human
<b>Host:</b>	Mouse
<b>Isotype:</b>	IgG1
<b>Clonality:</b>	Monoclonal
<b>Immunogen:</b>	Full length human recombinant protein of human LENG1 (NP_077292) produced in HEK293T cell.
<b>Formulation:</b>	PBS (pH 7.3) containing 1% BSA, 50% glycerol and 0.02% sodium azide.
<b>Concentration:</b>	0.52 mg/ml
<b>Purification:</b>	Purified from mouse ascites fluids or tissue culture supernatant by affinity chromatography (protein A/G)
<b>Conjugation:</b>	Unconjugated
<b>Storage:</b>	Store at -20°C as received.
<b>Stability:</b>	Stable for 12 months from date of receipt.
<b>Predicted Protein Size:</b>	30.3 kDa
<b>Gene Name:</b>	leukocyte receptor cluster member 1
<b>Database Link:</b>	<a href="#">NP_077292</a> <a href="#">Entrez Gene 79165 Human</a> <a href="#">Q96BZ8</a>
<b>Synonyms:</b>	leukocyte receptor cluster (LRC) member 1



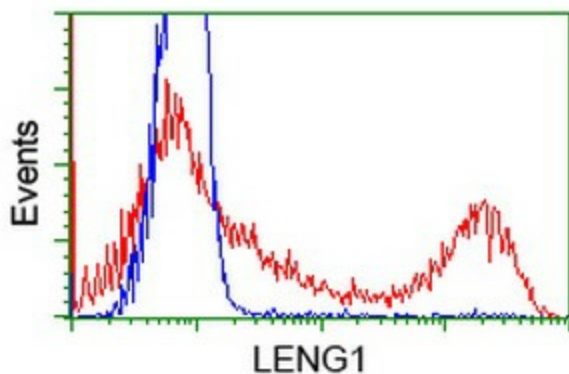
[View online »](#)

**Product images:**

HEK293T cells were transfected with the pCMV6-ENTRY control (Left lane) or pCMV6-ENTRY LENG1 ([RC204931], Right lane) cDNA for 48 hrs and lysed. Equivalent amounts of cell lysates (5 ug per lane) were separated by SDS-PAGE and immunoblotted with anti-LENG1. Positive lysates [LY411314] (100ug) and [LC411314] (20ug) can be purchased separately from OriGene.



Anti-LENG1 mouse monoclonal antibody (TA503083) immunofluorescent staining of COS7 cells transiently transfected by pCMV6-ENTRY LENG1 ([RC204931]).



HEK293T cells transfected with either [RC204931] overexpress plasmid (Red) or empty vector control plasmid (Blue) were immunostained by anti-LENG1 antibody (TA503083), and then analyzed by flow cytometry.