

Product datasheet for **TA503077BM**

TOMM34 Mouse Monoclonal Antibody (HRP conjugated) [Clone ID: OTI 2E11]

Product data:

Product Type:	Primary Antibodies
Clone Name:	OTI 2E11
Applications:	FC, WB
Recommended Dilution:	WB 1:2000, FLOW 1:100
Reactivity:	Human, Mouse, Rat
Host:	Mouse
Isotype:	IgG1
Clonality:	Monoclonal
Immunogen:	Full length human recombinant protein of human TOMM34 (NP_006800) produced in HEK293T cell.
Formulation:	PBS (pH 7.3) containing 1% BSA, 50% glycerol.
Concentration:	0.5 mg/ml
Purification:	Purified from mouse ascites fluids or tissue culture supernatant by affinity chromatography (protein A/G)
Conjugation:	HRP
Storage:	Store at -20°C as received.
Stability:	Stable for 12 months from date of receipt.
Predicted Protein Size:	34.4 kDa
Gene Name:	translocase of outer mitochondrial membrane 34
Database Link:	NP_006800 Entrez Gene 10953 Human Q15785
Background:	The protein encoded by this gene is involved in the import of precursor proteins into mitochondria. The encoded protein has a chaperone-like activity, binding the mature portion of unfolded proteins and aiding their import into mitochondria. This protein, which is found in the cytoplasm and sometimes associated with the outer mitochondrial membrane, has a weak ATPase activity and contains 6 TPR repeats. [provided by RefSeq, Jul 2008]

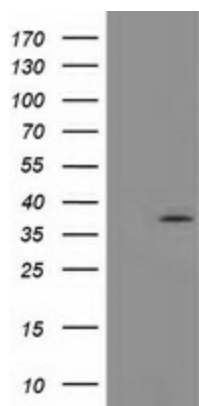


[View online »](#)

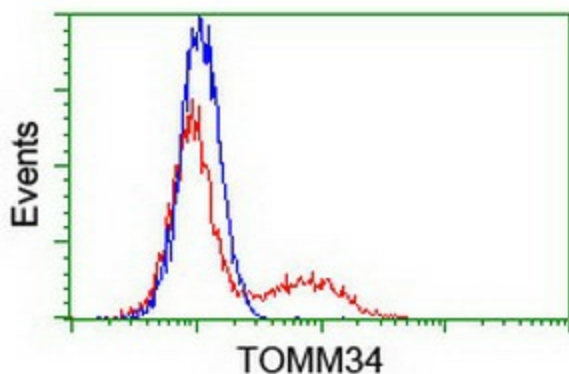
Synonyms: HTOM34P; TOM34; URCC3

Protein Families: Druggable Genome

Product images:



HEK293T cells were transfected with the pCMV6-ENTRY control (Left lane) or pCMV6-ENTRY TOMM34 ([RC201083], Right lane) cDNA for 48 hrs and lysed. Equivalent amounts of cell lysates (5 ug per lane) were separated by SDS-PAGE and immunoblotted with anti-TOMM34. Positive lysates [LY416405] (100ug) and [LC416405] (20ug) can be purchased separately from OriGene.



HEK293T cells transfected with either [RC201083] overexpress plasmid (Red) or empty vector control plasmid (Blue) were immunostained by anti-TOMM34 antibody ([TA503077]), and then analyzed by flow cytometry.