

Product datasheet for **TA503075BM**

RGS5 Mouse Monoclonal Antibody (HRP conjugated) [Clone ID: OTI1C1]

Product data:

Product Type:	Primary Antibodies
Clone Name:	OTI1C1
Applications:	FC, IF, IHC, WB
Recommended Dilution:	WB 1:2000, IHC 1:150, FLOW 1:100
Reactivity:	Human, Mouse, Rat
Host:	Mouse
Isotype:	IgG1
Clonality:	Monoclonal
Immunogen:	Full length human recombinant protein of human RGS5 (NP_003608) produced in HEK293T cell.
Formulation:	PBS (pH 7.4) containing 1% BSA, 50% glycerol.
Concentration:	0.5 mg/ml
Purification:	Purified from mouse ascites fluids or tissue culture supernatant by affinity chromatography (protein A/G)
Conjugation:	HRP
Storage:	Store at -20°C as received.
Stability:	Stable for 12 months from date of receipt.
Predicted Protein Size:	20.8 kDa
Gene Name:	regulator of G protein signaling 5
Database Link:	NP_003608 Entrez Gene 19737 Mouse Entrez Gene 54294 Rat Entrez Gene 8490 Human O15539



[View online »](#)

Background:

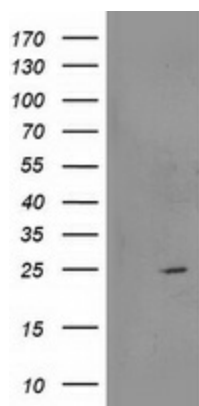
This gene encodes a member of the regulators of G protein signaling (RGS) family. The RGS proteins are signal transduction molecules which are involved in the regulation of heterotrimeric G proteins by acting as GTPase activators. This gene is a hypoxia-inducible factor-1 dependent, hypoxia-induced gene which is involved in the induction of endothelial apoptosis. This gene is also one of three genes on chromosome 1q contributing to elevated blood pressure. Alternatively spliced transcript variants encoding different isoforms have been identified.

Synonyms:

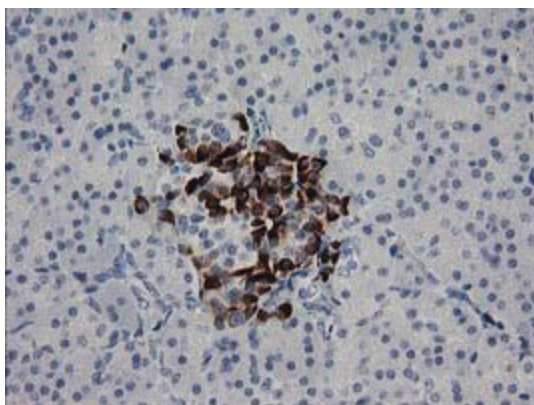
MST092; MST106; MST129; MSTP032; MSTP092; MSTP106; MSTP129

Protein Families:

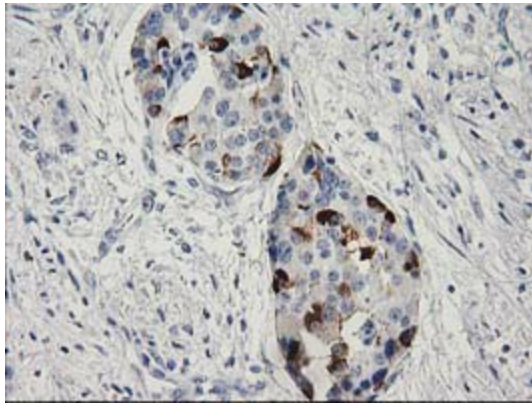
Druggable Genome

Product images:

HEK293T cells were transfected with the pCMV6-ENTRY control (Cat# [PS100001], Left lane) or pCMV6-ENTRY RGS5 (Cat# [RC206857], Right lane) cDNA for 48 hrs and lysed. Equivalent amounts of cell lysates (5 ug per lane) were separated by SDS-PAGE and immunoblotted with anti-RGS5 (Cat# [TA503075]). Positive lysates [LY418548] (100ug) and [LC418548] (20ug) can be purchased separately from OriGene.



Immunohistochemical staining of paraffin-embedded Human pancreas tissue within the normal limits using anti-RGS5 mouse monoclonal antibody. (Heat-induced epitope retrieval by 10mM citric buffer, pH6.0, 100°C for 10min, [TA503075])



Immunohistochemical staining of paraffin-embedded Carcinoma of Human pancreas tissue using anti-RGS5 mouse monoclonal antibody. (Heat-induced epitope retrieval by 10mM citric buffer, pH6.0, 100°C for 10min, [TA503075])

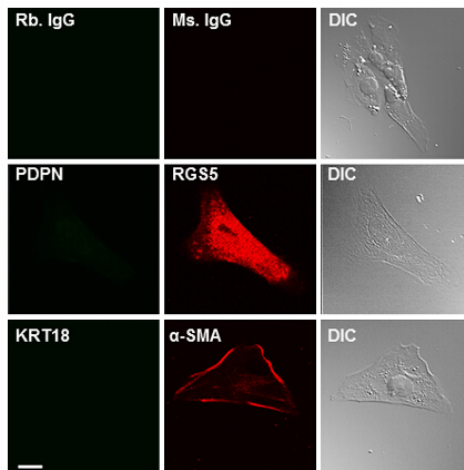


Figure from citation: Immunofluorescence of RGS5 protein level by using anti-RGS5 antibody in primary neonatal pig GMCs. [View Citation](#)

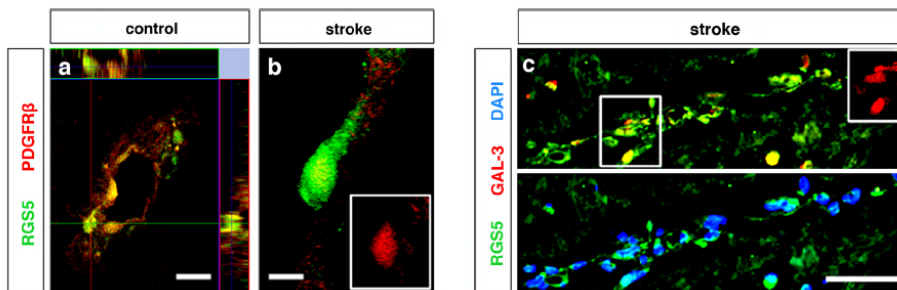
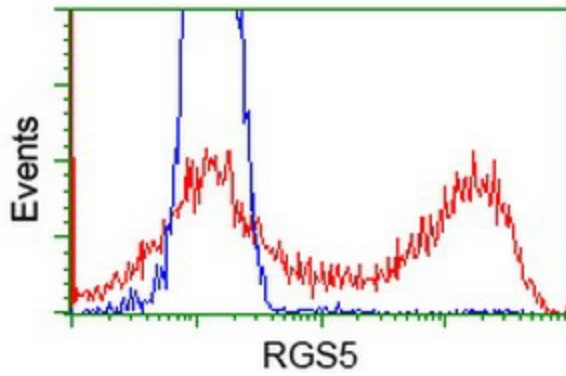
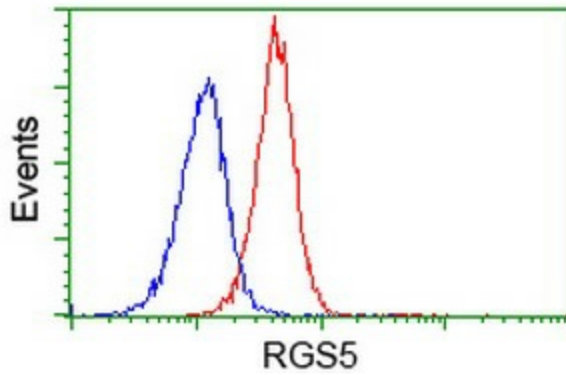


Figure from citation: Immunofluorescence of RGS5 protein level by using anti-RGS5 antibody in human brain pericytes. Dilution: 1:200 [View Citation](#)



HEK293T cells transfected with either [RC206857] overexpress plasmid (Red) or empty vector control plasmid (Blue) were immunostained by anti-RGS5 antibody ([TA503075]), and then analyzed by flow cytometry.



Flow cytometric Analysis of Jurkat cells, using anti-RGS5 antibody ([TA503075]), (Red), compared to a nonspecific negative control antibody, (Blue).