

Product datasheet for **TA503068AM**

Monoacylglycerol Lipase (MGLL) Mouse Monoclonal Antibody (Biotin conjugated) [Clone ID: OTI1B1]

Product data:

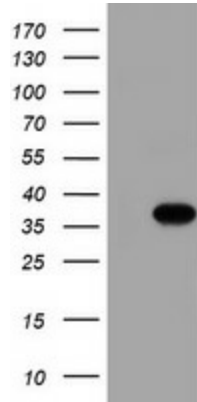
Product Type:	Primary Antibodies
Clone Name:	OTI1B1
Applications:	IF, IHC, WB
Recommended Dilution:	WB 1:2000, IHC 1:150, IF 1:100
Reactivity:	Human
Host:	Mouse
Isotype:	IgG1
Clonality:	Monoclonal
Immunogen:	Full length human recombinant protein of human MGLL(NP_009214) produced in HEK293T cell.
Formulation:	PBS (pH 7.3) containing 1% BSA, 50% glycerol and 0.02% sodium azide.
Concentration:	0.5 mg/ml
Purification:	Purified from mouse ascites fluids or tissue culture supernatant by affinity chromatography (protein A/G)
Conjugation:	Biotin
Storage:	Store at -20°C as received.
Stability:	Stable for 12 months from date of receipt.
Predicted Protein Size:	34.1 kDa
Gene Name:	monoglyceride lipase
Database Link:	NP_009214 Entrez Gene 11343 Human Q99685
Background:	Monoglyceride lipase (MGLL; EC 3.1.1.23) functions together with hormone-sensitive lipase (LIPE; MIM 151750) to hydrolyze intracellular triglyceride stores in adipocytes and other cells to fatty acids and glycerol. MGLL may also complement lipoprotein lipase (LPL; MIM 238600) in completing hydrolysis of monoglycerides resulting from degradation of lipoprotein triglycerides (Karlsson et al., 2001 [PubMed 11470505]). [supplied by OMIM]



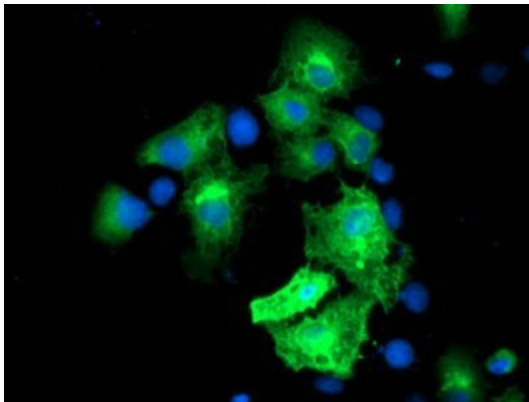
[View online »](#)

Synonyms: HU-K5; HUK5; MAGL; MGL
Protein Families: Druggable Genome, Protease
Protein Pathways: Glycerolipid metabolism, Metabolic pathways

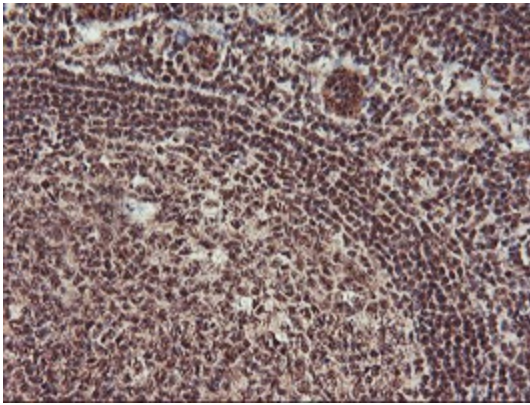
Product images:



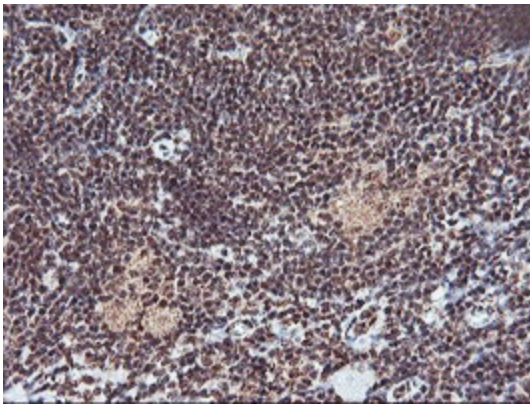
HEK293T cells were transfected with the pCMV6-ENTRY control (Left lane) or pCMV6-ENTRY MGLL [RC218358], Right lane) cDNA for 48 hrs and lysed. Equivalent amounts of cell lysates (5 ug per lane) were separated by SDS-PAGE and immunoblotted with anti-MGLL. Positive lysates [LY402124] (100ug) and [LC402124] (20ug) can be purchased separately from OriGene.



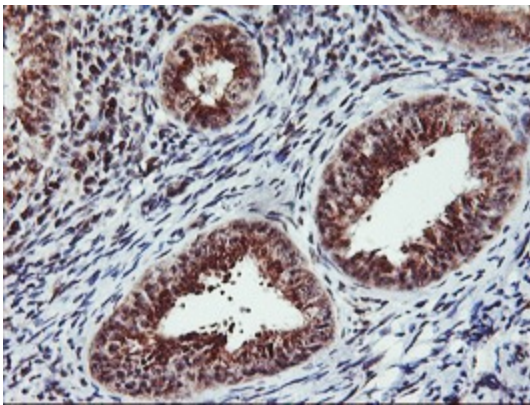
Western blot analysis of extracts (10ug) from HeLa cell line by using anti-MGLL monoclonal antibody at 1:200 dilution.



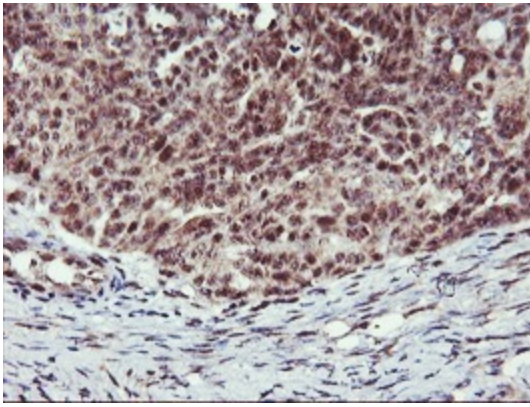
Immunohistochemical staining of paraffin-embedded Human tonsil within the normal limits using anti-MGLL mouse monoclonal antibody. (Heat-induced epitope retrieval by 10mM citric buffer, pH6.0, 100°C for 10min, [TA503068])



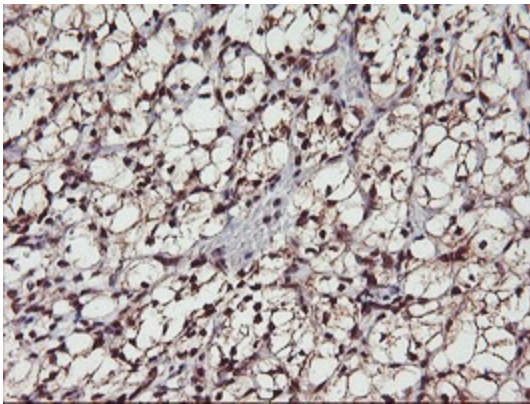
Immunohistochemical staining of paraffin-embedded Human lymphoma tissue using anti-MGLL mouse monoclonal antibody. (Heat-induced epitope retrieval by 10mM citric buffer, pH6.0, 100°C for 10min, [TA503068])



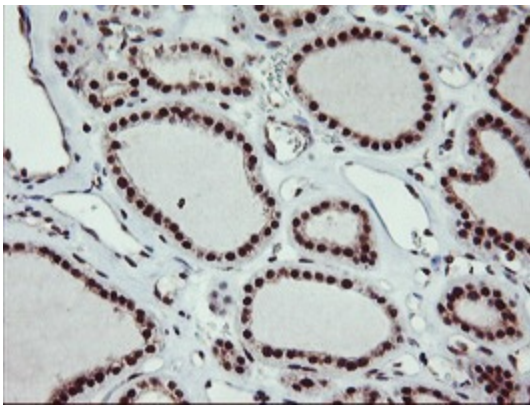
Immunohistochemical staining of paraffin-embedded Adenocarcinoma of Human endometrium tissue using anti-MGLL mouse monoclonal antibody. (Heat-induced epitope retrieval by 10mM citric buffer, pH6.0, 100°C for 10min, [TA503068])



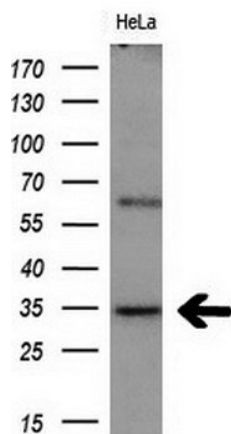
Immunohistochemical staining of paraffin-embedded Adenocarcinoma of Human ovary tissue using anti-MGLL mouse monoclonal antibody. (Heat-induced epitope retrieval by 10mM citric buffer, pH6.0, 100°C for 10min, [TA503068])



Immunohistochemical staining of paraffin-embedded Carcinoma of Human kidney tissue using anti-MGLL mouse monoclonal antibody. (Heat-induced epitope retrieval by 10mM citric buffer, pH6.0, 100°C for 10min, [TA503068])



Immunohistochemical staining of paraffin-embedded Carcinoma of Human thyroid tissue using anti-MGLL mouse monoclonal antibody. (Heat-induced epitope retrieval by 10mM citric buffer, pH6.0, 100°C for 10min, [TA503068])



Western blot analysis of extracts (10ug) from 1 cell line by using anti-MGLL monoclonal antibody at 1:200 dilution.