

## Product datasheet for **TA503066S**

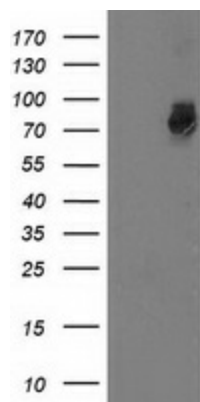
### GSPT2 Mouse Monoclonal Antibody [Clone ID: OTI2G9]

#### Product data:

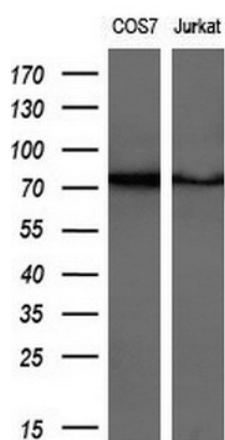
Product Type:	Primary Antibodies
Clone Name:	OTI2G9
Applications:	FC, IF, WB
Recommended Dilution:	WB 1:2000, IF 1:100, FLOW 1:100
Reactivity:	Human, Mouse, Rat
Host:	Mouse
Isotype:	IgG1
Clonality:	Monoclonal
Immunogen:	Full length human recombinant protein of human GSPT2 (NP_060564) produced in HEK293T cell.
Formulation:	PBS (pH 7.3) containing 1% BSA, 50% glycerol and 0.02% sodium azide.
Concentration:	0.32 mg/ml
Purification:	Purified from mouse ascites fluids or tissue culture supernatant by affinity chromatography (protein A/G)
Conjugation:	Unconjugated
Storage:	Store at -20°C as received.
Stability:	Stable for 12 months from date of receipt.
Predicted Protein Size:	68.7 kDa
Gene Name:	G1 to S phase transition 2
Database Link:	<a href="#">NP_060564</a> <a href="#">Entrez Gene 14853 Mouse</a> <a href="#">Entrez Gene 501582 Rat</a> <a href="#">Entrez Gene 23708 Human</a> <a href="#">Q8IYD1</a>
Background:	This gene encodes a GTPase that belongs to the GTP-binding elongation factor family. The encoded protein is a polypeptide release factor that complexes with eukaryotic peptide chain release factor 1 to mediate translation termination. This protein may also be involved in mRNA stability. COMPLETENESS: complete on the 3' end.
Synonyms:	ERF3B; GST2


[View online »](#)

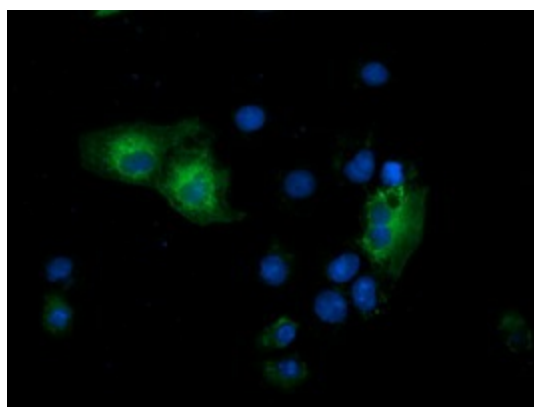
## Product images:



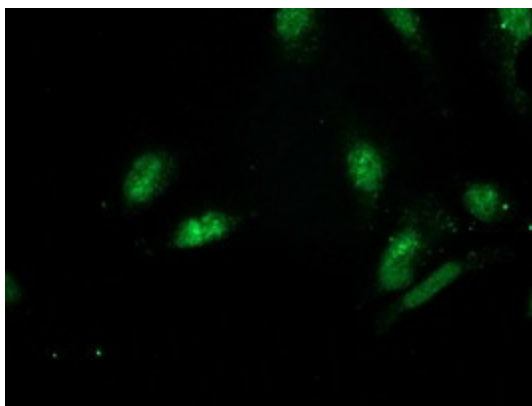
HEK293T cells were transfected with the pCMV6-ENTRY control (Cat# [PS100001], Left lane) or pCMV6-ENTRY GSPT2 (Cat# [RC206259], Right lane) cDNA for 48 hrs and lysed. Equivalent amounts of cell lysates (5 ug per lane) were separated by SDS-PAGE and immunoblotted with anti-GSPT2 (Cat# [TA503066]). Positive lysates [LY402649] (100ug) and [LC402649] (20ug) can be purchased separately from OriGene.



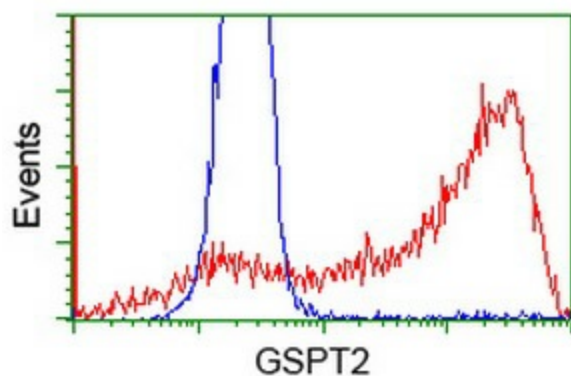
Western blot analysis of extracts (10ug) from 2 different cell lines by using anti-GSPT2 monoclonal antibody (1:200).



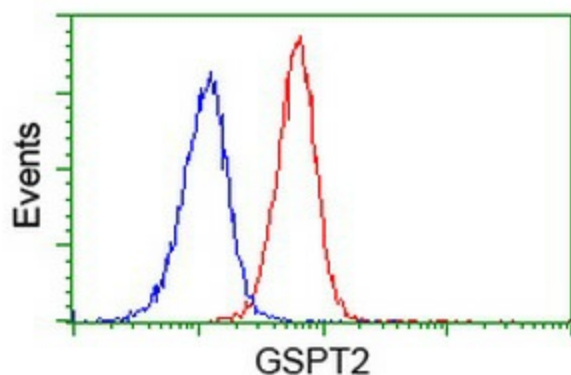
Anti-GSPT2 mouse monoclonal antibody ([TA503066]) immunofluorescent staining of COS7 cells transiently transfected by pCMV6-ENTRY GSPT2 ([RC206259]).



Immunofluorescent staining of HeLa cells using anti-GSPT2 mouse monoclonal antibody ([TA503066]).



HEK293T cells transfected with either [RC206259] overexpress plasmid (Red) or empty vector control plasmid (Blue) were immunostained by anti-GSPT2 antibody ([TA503066]), and then analyzed by flow cytometry.



Flow cytometric Analysis of Jurkat cells, using anti-GSPT2 antibody ([TA503066]), (Red), compared to a nonspecific negative control antibody, (Blue).