

Product datasheet for **TA503051**

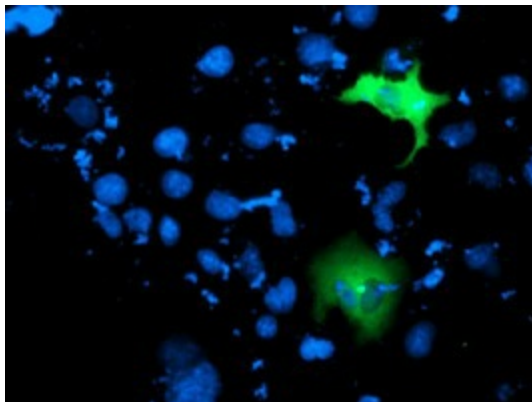
MDS028 (ITFG2) Mouse Monoclonal Antibody [Clone ID: OTI3A2]

Product data:

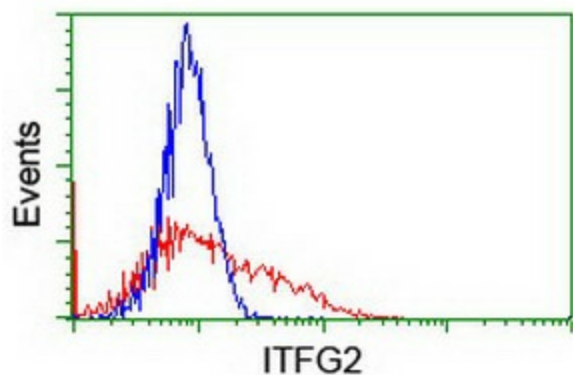
Product Type:	Primary Antibodies
Clone Name:	OTI3A2
Applications:	FC, IF
Recommended Dilution:	IF 1:100, FLOW 1:100
Reactivity:	Human, Mouse, Rat
Host:	Mouse
Isotype:	IgG2b
Clonality:	Monoclonal
Immunogen:	Full length human recombinant protein of human ITFG2 (NP_060933) produced in HEK293T cell.
Formulation:	PBS (pH 7.3) containing 1% BSA, 50% glycerol and 0.02% sodium azide.
Concentration:	0.4 mg/ml
Purification:	Purified from mouse ascites fluids or tissue culture supernatant by affinity chromatography (protein A/G)
Conjugation:	Unconjugated
Storage:	Store at -20°C as received.
Stability:	Stable for 12 months from date of receipt.
Predicted Protein Size:	49.1 kDa
Gene Name:	integrin alpha FG-GAP repeat containing 2
Database Link:	NP_060933 Entrez Gene 362441 RatEntrez Gene 55846 Human Q969R8
Synonyms:	MDS028
Protein Families:	Druggable Genome



[View online »](#)

Product images:

Anti-ITFG2 mouse monoclonal antibody (TA503051) immunofluorescent staining of COS7 cells transiently transfected by pCMV6-ENTRY ITFG2 ([RC200818]).



HEK293T cells transfected with either [RC200818] overexpress plasmid (Red) or empty vector control plasmid (Blue) were immunostained by anti-ITFG2 antibody (TA503051), and then analyzed by flow cytometry.