

## Product datasheet for **TA503047BM**

### **MDS028 (ITFG2) Mouse Monoclonal Antibody (HRP conjugated) [Clone ID: OTI3A3]**

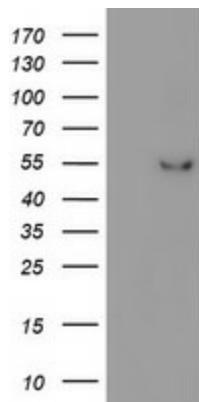
#### **Product data:**

|                         |                                                                                                                                                                                 |
|-------------------------|---------------------------------------------------------------------------------------------------------------------------------------------------------------------------------|
| Product Type:           | Primary Antibodies                                                                                                                                                              |
| Clone Name:             | OTI3A3                                                                                                                                                                          |
| Applications:           | IHC, WB                                                                                                                                                                         |
| Recommended Dilution:   | WB 1:500~2000, IHC 1:150                                                                                                                                                        |
| Reactivity:             | Human, Rat, Monkey, Mouse                                                                                                                                                       |
| Host:                   | Mouse                                                                                                                                                                           |
| Isotype:                | IgG1                                                                                                                                                                            |
| Clonality:              | Monoclonal                                                                                                                                                                      |
| Immunogen:              | Full length human recombinant protein of human ITFG2(NP_060933) produced in HEK293T cell.                                                                                       |
| Formulation:            | PBS (pH 7.3) containing 1% BSA, 50% glycerol.                                                                                                                                   |
| Concentration:          | 0.5 mg/ml                                                                                                                                                                       |
| Purification:           | Purified from mouse ascites fluids or tissue culture supernatant by affinity chromatography (protein A/G)                                                                       |
| Conjugation:            | HRP                                                                                                                                                                             |
| Storage:                | Store at -20°C as received.                                                                                                                                                     |
| Stability:              | Stable for 12 months from date of receipt.                                                                                                                                      |
| Predicted Protein Size: | 49.1 kDa                                                                                                                                                                        |
| Gene Name:              | integrin alpha FG-GAP repeat containing 2                                                                                                                                       |
| Database Link:          | <a href="#">NP_060933</a><br><a href="#">Entrez Gene 362441 Rat</a> <a href="#">Entrez Gene 708596 Monkey</a> <a href="#">Entrez Gene 55846 Human</a><br><a href="#">Q969R8</a> |
| Synonyms:               | MDS028                                                                                                                                                                          |
| Protein Families:       | Druggable Genome                                                                                                                                                                |

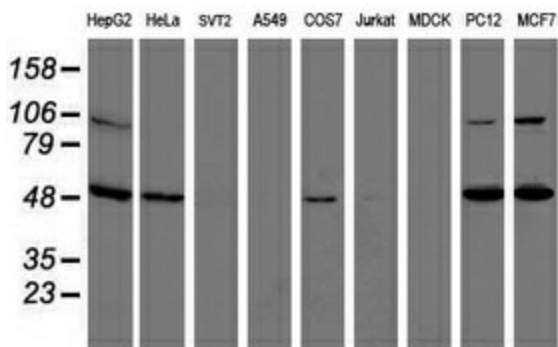


[View online »](#)

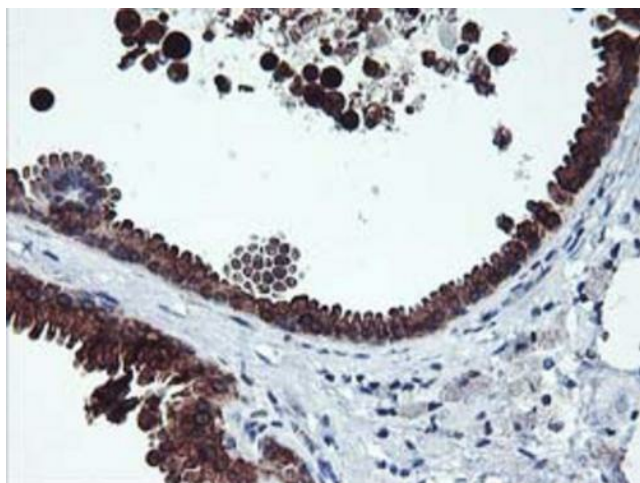
**Product images:**



HEK293T cells were transfected with the pCMV6-ENTRY control (Left lane) or pCMV6-ENTRY ITFG2 ([RC200818], Right lane) cDNA for 48 hrs and lysed. Equivalent amounts of cell lysates (5 ug per lane) were separated by SDS-PAGE and immunoblotted with anti-ITFG2. Positive lysates [LY413041] (100ug) and [LC413041] (20ug) can be purchased separately from OriGene.



Western blot analysis of extracts (35ug) from 9 different cell lines by using anti-ITFG2 monoclonal antibody.



Immunohistochemical staining of paraffin-embedded Human breast tissue within the normal limits using anti-ITFG2 mouse monoclonal antibody. (Heat-induced epitope retrieval by 10mM citric buffer, pH6.0, 100°C for 10min, [TA503047])