

Product datasheet for **TA503047AM**

MDS028 (ITFG2) Mouse Monoclonal Antibody (Biotin conjugated) [Clone ID: OTI3A3]

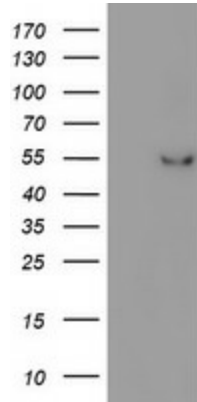
Product data:

Product Type:	Primary Antibodies
Clone Name:	OTI3A3
Applications:	IHC, WB
Recommended Dilution:	WB 1:500~2000, IHC 1:150
Reactivity:	Human, Rat, Monkey, Mouse
Host:	Mouse
Isotype:	IgG1
Clonality:	Monoclonal
Immunogen:	Full length human recombinant protein of human ITFG2(NP_060933) produced in HEK293T cell.
Formulation:	PBS (pH 7.3) containing 1% BSA, 50% glycerol and 0.02% sodium azide.
Concentration:	0.5 mg/ml
Purification:	Purified from mouse ascites fluids or tissue culture supernatant by affinity chromatography (protein A/G)
Conjugation:	Biotin
Storage:	Store at -20°C as received.
Stability:	Stable for 12 months from date of receipt.
Predicted Protein Size:	49.1 kDa
Gene Name:	integrin alpha FG-GAP repeat containing 2
Database Link:	NP_060933 Entrez Gene 362441 Rat Entrez Gene 708596 Monkey Entrez Gene 55846 Human Q969R8
Synonyms:	MDS028
Protein Families:	Druggable Genome

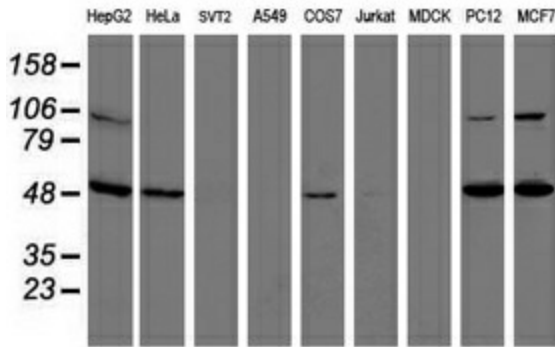


[View online »](#)

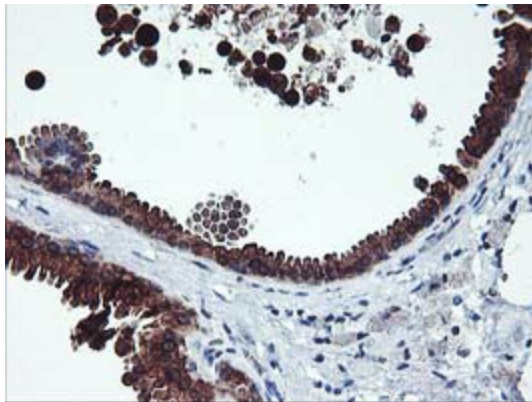
Product images:



HEK293T cells were transfected with the pCMV6-ENTRY control (Left lane) or pCMV6-ENTRY ITFG2 ([RC200818], Right lane) cDNA for 48 hrs and lysed. Equivalent amounts of cell lysates (5 ug per lane) were separated by SDS-PAGE and immunoblotted with anti-ITFG2. Positive lysates [LY413041] (100ug) and [LC413041] (20ug) can be purchased separately from OriGene.



Western blot analysis of extracts (35ug) from 9 different cell lines by using anti-ITFG2 monoclonal antibody.



Immunohistochemical staining of paraffin-embedded Human breast tissue within the normal limits using anti-ITFG2 mouse monoclonal antibody. (Heat-induced epitope retrieval by 10mM citric buffer, pH6.0, 100°C for 10min, [TA503047])