

## Product datasheet for **TA503046S**

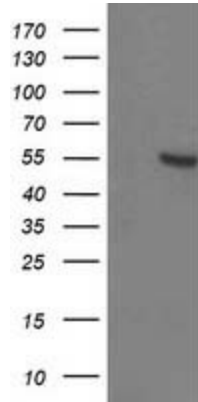
### **MDS028 (ITFG2) Mouse Monoclonal Antibody [Clone ID: OTI3E10]**

#### **Product data:**

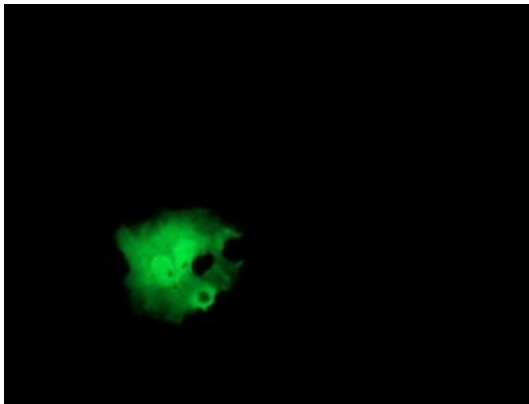
|                         |   |
|-------------------------|---|
| Product Type:           | Primary Antibodies  |
| Clone Name:             | OTI3E10   |
| Applications:           | FC, IF, WB  |
| Recommended Dilution:   | WB 1:500, IF 1:100, FLOW 1:100  |
| Reactivity:             | Human, Mouse, Rat   |
| Host:                   | Mouse   |
| Isotype:                | IgG1  |
| Clonality:              | Monoclonal  |
| Immunogen:              | Full length human recombinant protein of human ITFG2 (NP_060933) produced in HEK293T cell.  |
| Formulation:            | PBS (pH 7.3) containing 1% BSA, 50% glycerol and 0.02% sodium azide.  |
| Concentration:          | 0.32 mg/ml  |
| Purification:           | Purified from mouse ascites fluids or tissue culture supernatant by affinity chromatography (protein A/G)                         |
| Conjugation:            | Unconjugated  |
| Storage:                | Store at -20°C as received.   |
| Stability:              | Stable for 12 months from date of receipt.  |
| Predicted Protein Size: | 49.1 kDa  |
| Gene Name:              | integrin alpha FG-GAP repeat containing 2   |
| Database Link:          | <a href="#">NP_060933</a><br><a href="#">Entrez Gene 362441</a> <a href="#">RatEntrez Gene 55846</a> <a href="#">Human Q969R8</a> |
| Synonyms:               | MDS028  |
| Protein Families:       | Druggable Genome  |



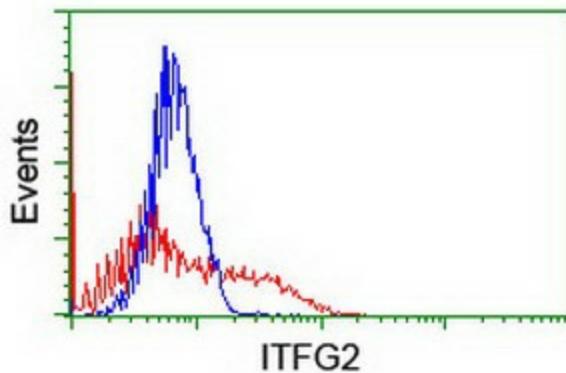
[View online »](#)

**Product images:**

HEK293T cells were transfected with the pCMV6-ENTRY control (Left lane) or pCMV6-ENTRY ITFG2 ([RC200818], Right lane) cDNA for 48 hrs and lysed. Equivalent amounts of cell lysates (5 ug per lane) were separated by SDS-PAGE and immunoblotted with anti-ITFG2. Positive lysates [LY413041] (100ug) and [LC413041] (20ug) can be purchased separately from OriGene.



Anti-ITFG2 mouse monoclonal antibody ([TA503046]) immunofluorescent staining of COS7 cells transiently transfected by pCMV6-ENTRY ITFG2 ([RC200818]).



HEK293T cells transfected with either [RC200818] overexpress plasmid (Red) or empty vector control plasmid (Blue) were immunostained by anti-ITFG2 antibody ([TA503046]), and then analyzed by flow cytometry.